

Hilo, Hawaii

15 MARCH 1980

TO

PAPEETE, TAHITI

16 APRIL 1980

HOKULE'A  
NAVIGATION  
REPORTS

Steve Somsen



DOCUMENTS CAPTURED AS RECEIVED



DOCUMENTS CAPTURED AS RECEIVED





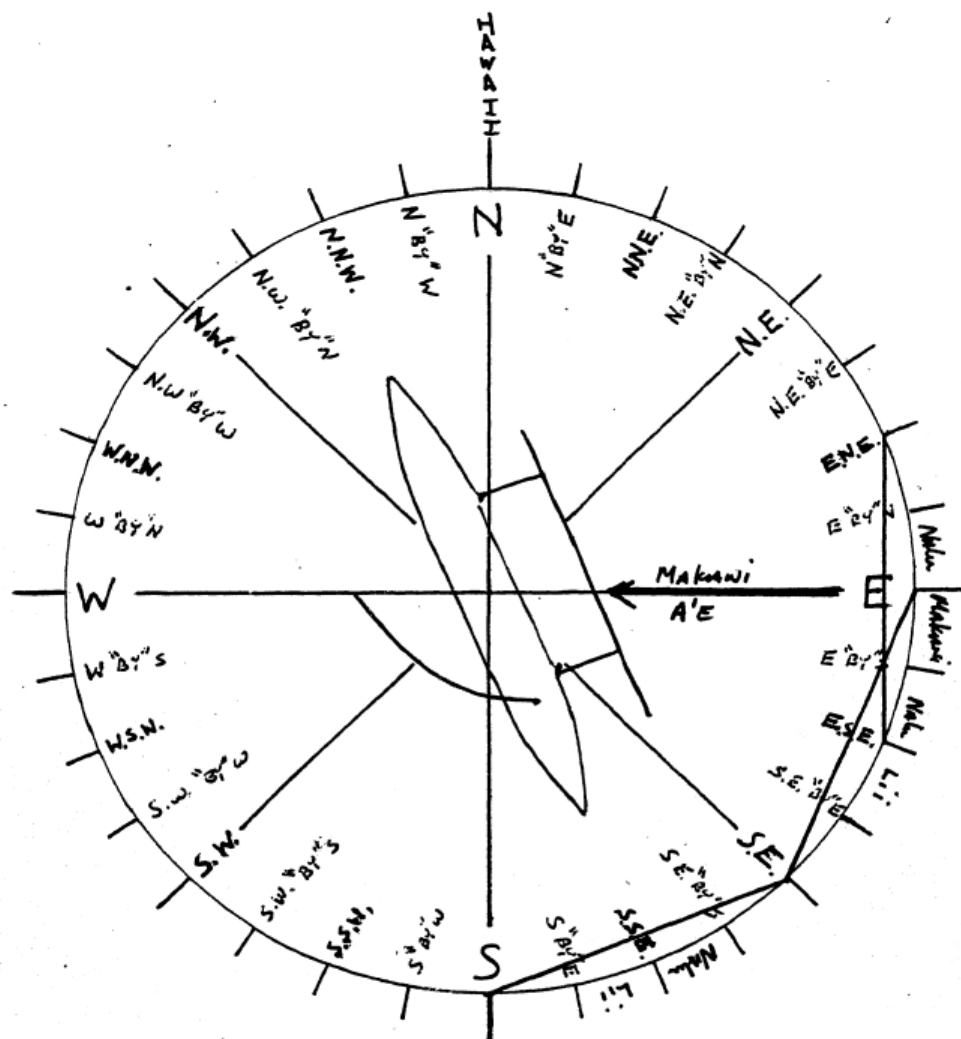
DOCUMENTS CAPTURED AS RECEIVED





- MARCH 17 / Day 3

DOCUMENTS CAPTURED AS RECEIVED



March 17 / March 18  
Day 3      Day 4

Tide North  
"Fading"



DOCUMENTS CAPTURED AS RECEIVED



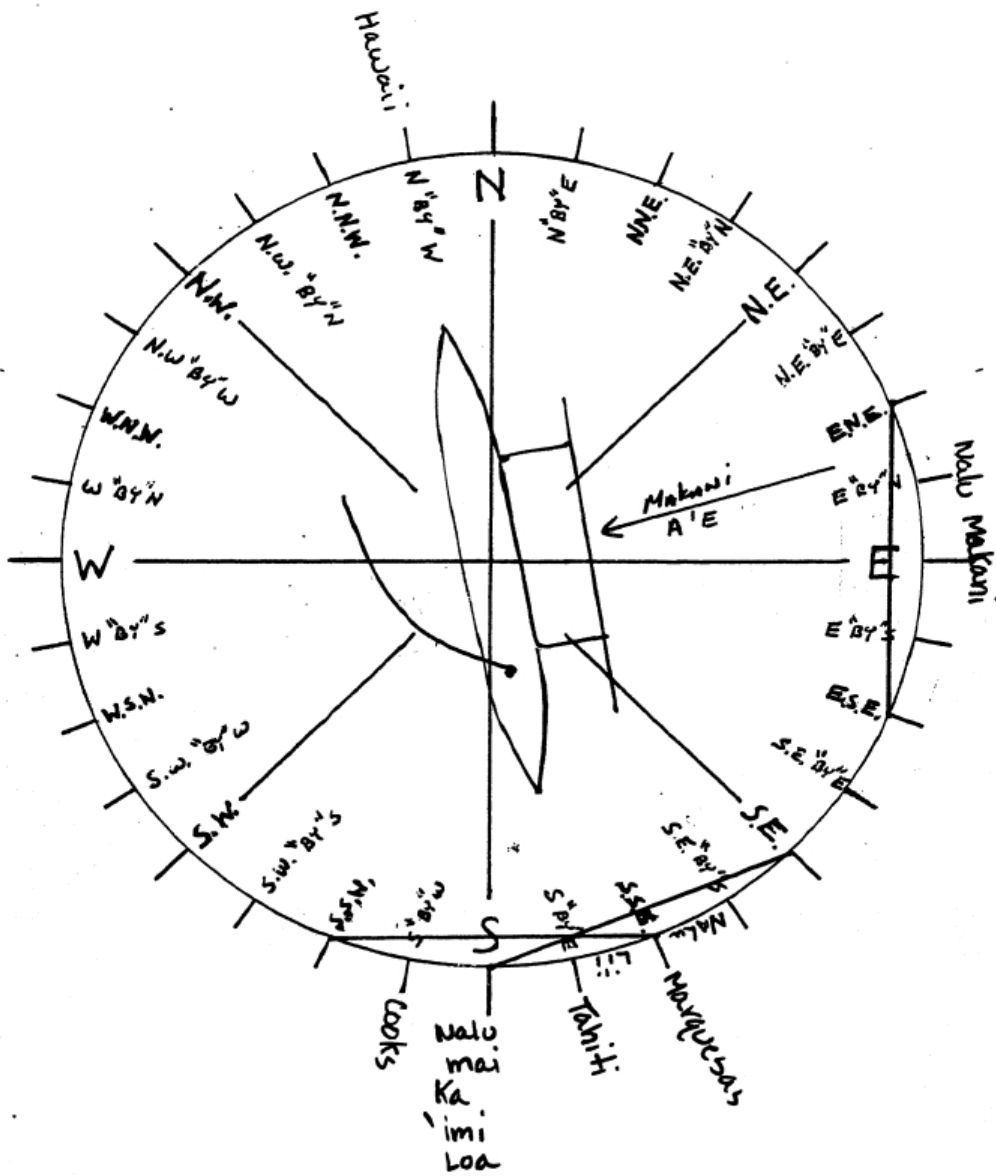
**DOCUMENTS CAPTURED AS RECEIVED**



DOCUMENTS CAPTURED AS RECEIVED



March 18 / Day 4





## RADIO COMMUNICATION: Hokule'a - Ishka

TUESDAY

1. Time of fix

month: March date 18 time Sunset

2. Hokule'a position

MAP: SUNS IN SATAPUE & SAR NOLO  
 therefore were heading towards  
 turn at the place where  
 Antares rises.

To Marquesas SE NALLO  
 To Tahiti SE HAKA  
 To Cook Islands SW HAKA  
 To Hawaii SW HAKA 1 1/2 SD  
 In the HOUSE of 17 N

3. Hokule'a status

Normal or \_\_\_\_\_

4. Hokule'a course &amp; speed

SE HAKA + HAKA degrees True 5 1/2 knots

5. Wind speed &amp; direction

wind 22 knots SE HAKA direction

6. Primary wave height &amp; direction

waves \_\_\_\_\_ feet 1 HAKA direction

7. Secondary wave height &amp; dir.

2nd waves \_\_\_\_\_ feet 2 SE NALLO direction

8. Cloud type (cumulus etc.)

clouds (cumulus) 3 HAKA

9. Cloud coverage %

25 percent 4 NE HAKA (very small) infrequent

10. Cloud height

1000 1 thousand feet

11. Present weather

weather \_\_\_\_\_

12. Ishka status

n.a.

13. Predicted ETA

E.T.A. Papeete or \_\_\_\_\_

Month \_\_\_\_\_ date \_\_\_\_\_ time \_\_\_\_\_

14. Messages for Honolulu

HAKA - HAKA  
 SEHAKA in HAKA  
 HAKA in HAKA  
 HAKA in HAKA

15. Next contact

Sunrise or Sunset or \_\_\_\_\_

16. Request messages from P.V.S.

Messages from P.V.S. \_\_\_\_\_

17. End Comms.

"Roger-Aloha to all aboard the Ishka-This is the sailing canoe Hokule'a WYB-8064 OUT."

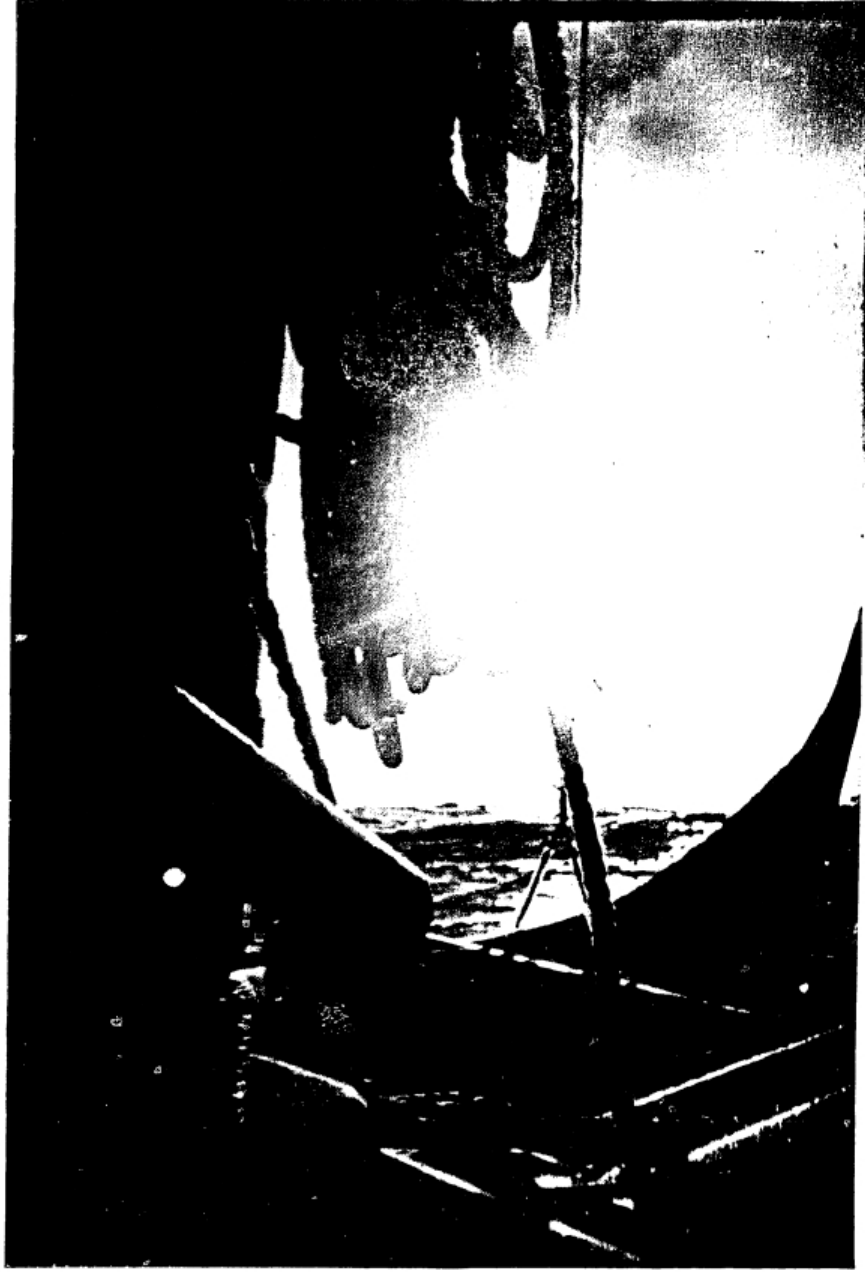
NAME: \_\_\_\_\_ DATE: \_\_\_\_\_ TIME: \_\_\_\_\_

RADIO OPERATOR: Please sign your name with the date & time of contact.  
 File this form with the others in sequence.  
 This will make up your radio log.

DOCUMENTS CAPTURED AS RECEIVED



DOCUMENTS CAPTURED AS RECEIVED



DOCUMENTS CAPTURED AS RECEIVED



DOCUMENTS CAPTURED AS RECEIVED



DOCUMENTS CAPTURED AS RECEIVED



DOCUMENTS CAPTURED AS RECEIVED



DOCUMENTS CAPTURED AS RECEIVED

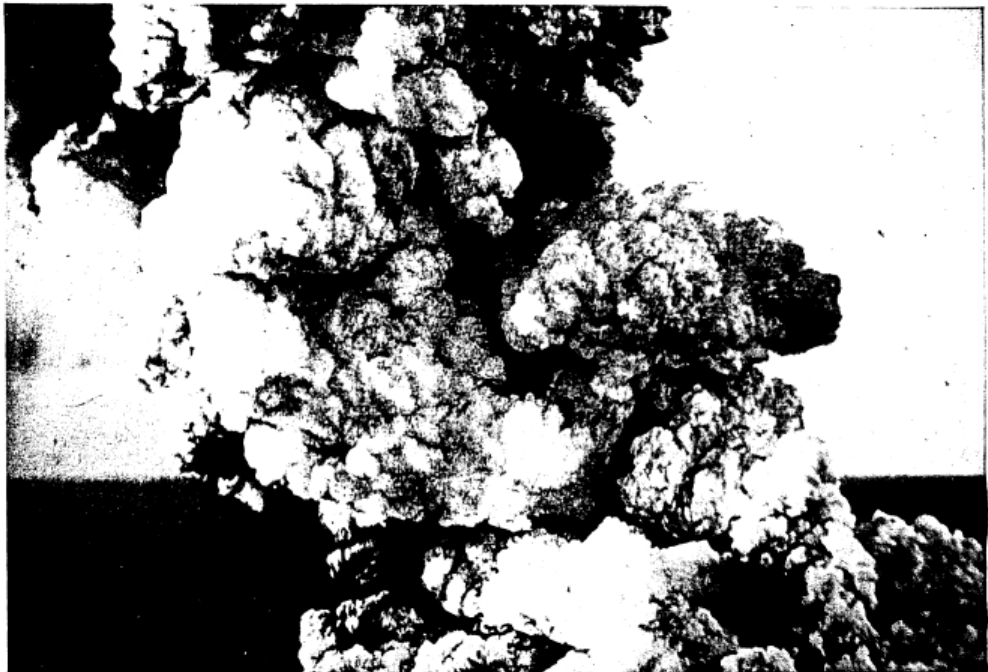




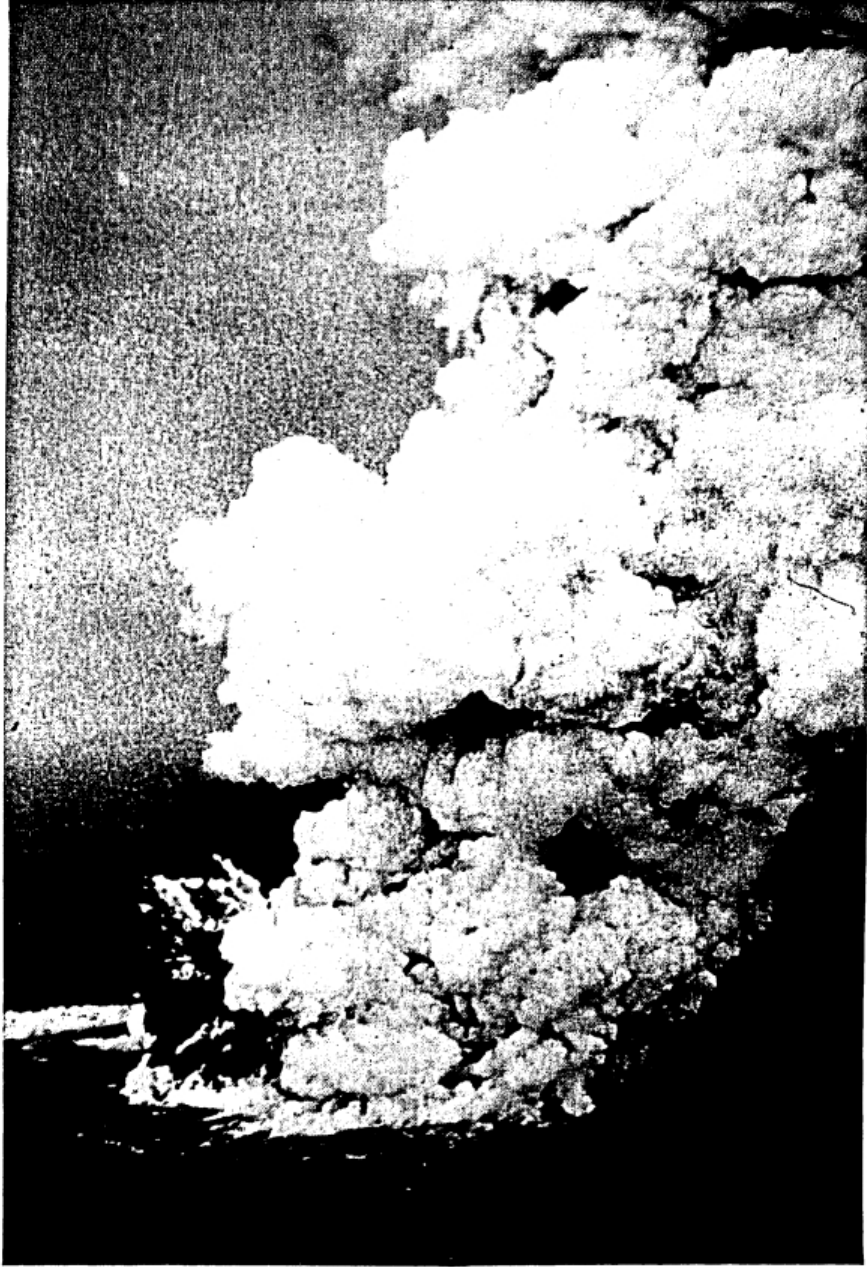
DOCUMENTS CAPTURED AS RECEIVED



DOCUMENTS CAPTURED AS RECEIVED



DOCUMENTS CAPTURED AS RECEIVED



DOCUMENTS CAPTURED AS RECEIVED



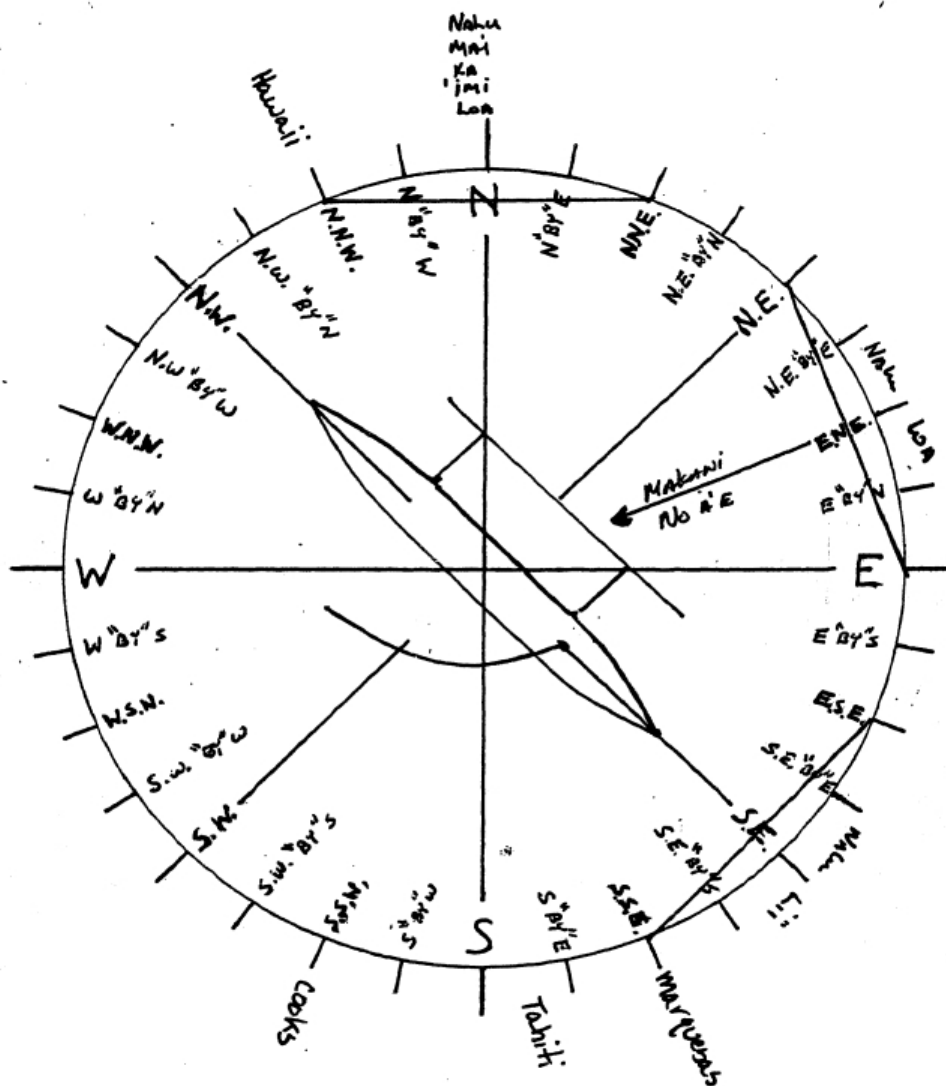
DOCUMENTS CAPTURED AS RECEIVED



DOCUMENTS CAPTURED AS RECEIVED









DOCUMENTS CAPTURED AS RECEIVED



DOCUMENTS CAPTURED AS RECEIVED



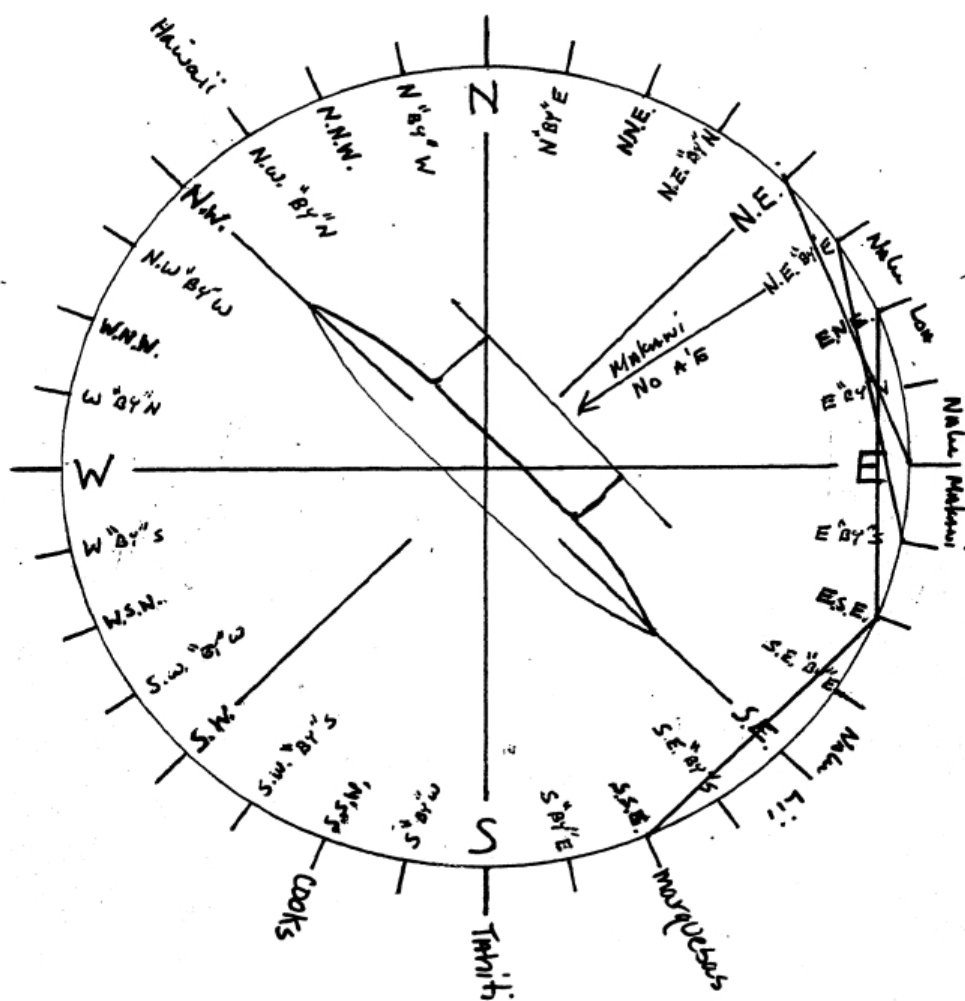


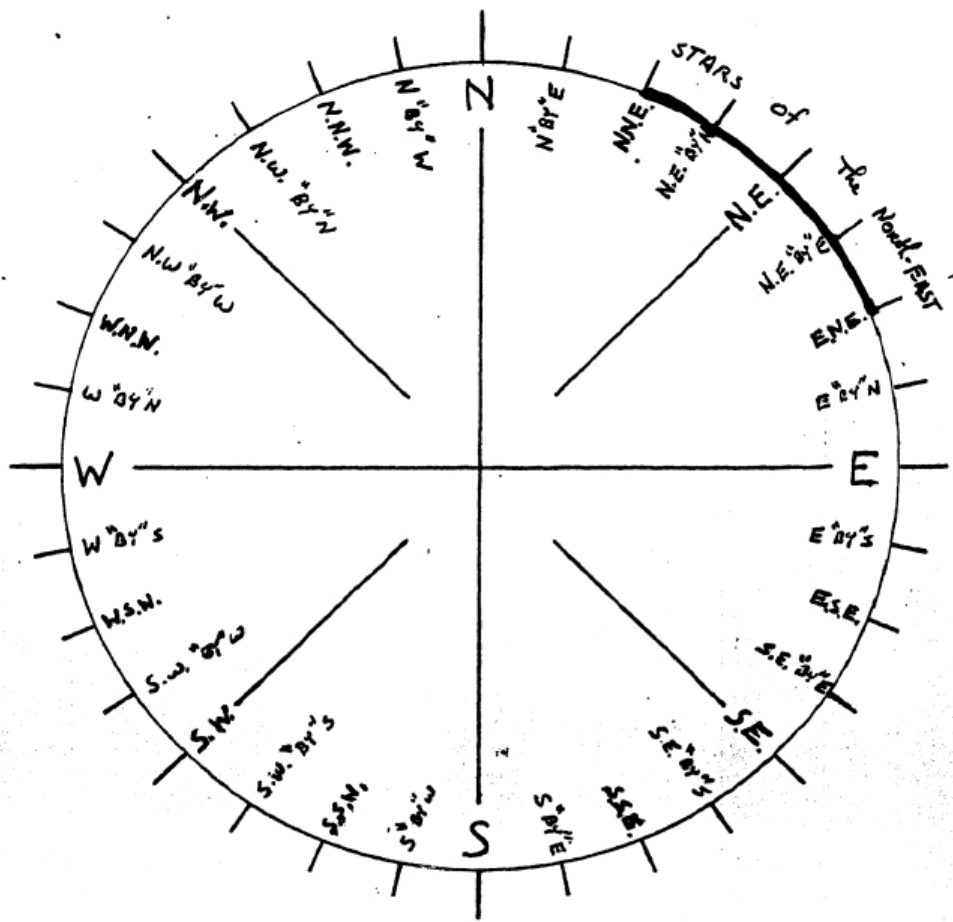
DOCUMENTS CAPTURED AS RECEIVED



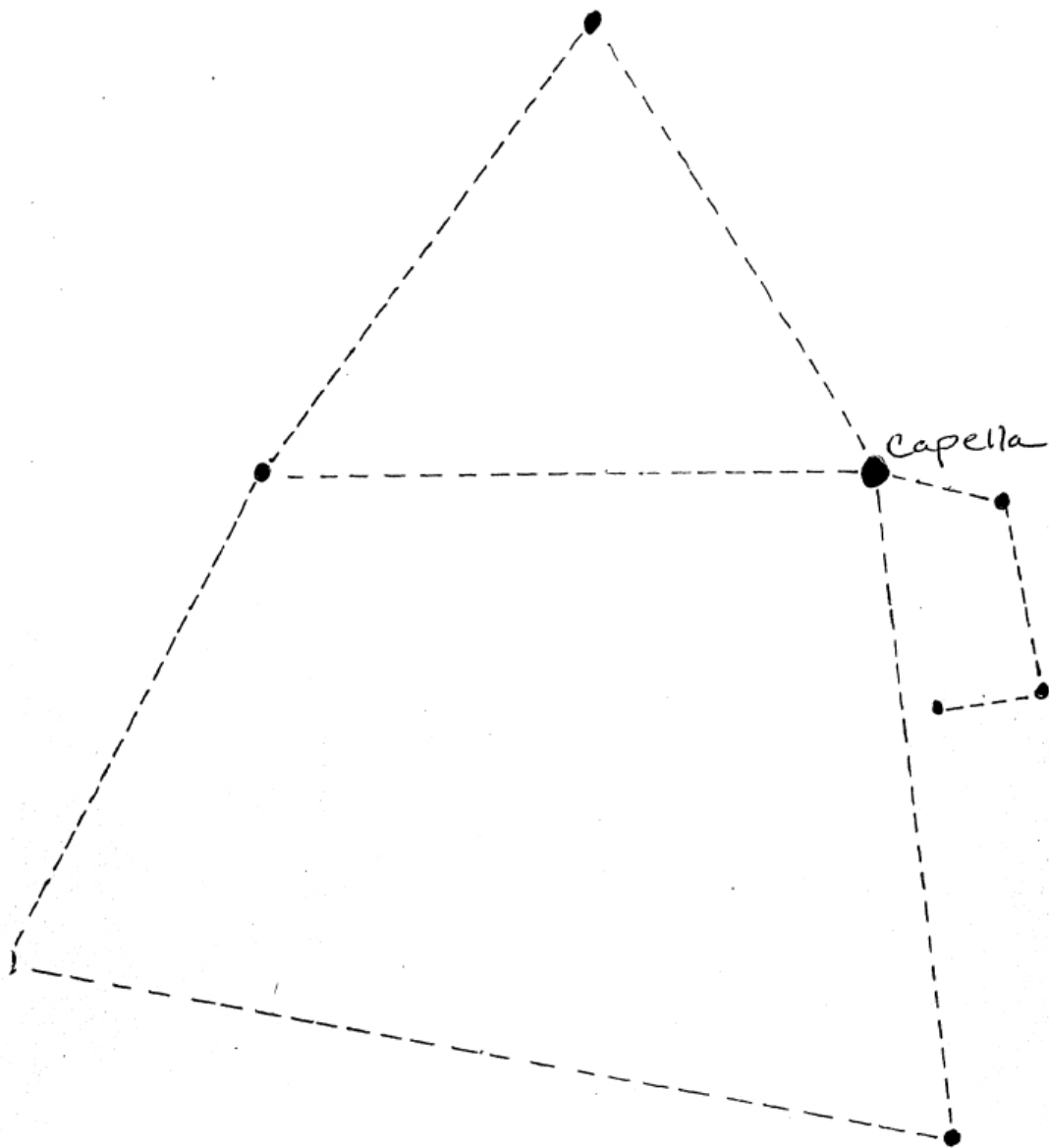


MARCH 22 / Day 8





# AURIGA (Charioteer)

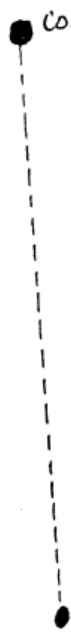


This bright constellation  
with a bright star capella  
rises about 45° N. best  
to see around Dec.



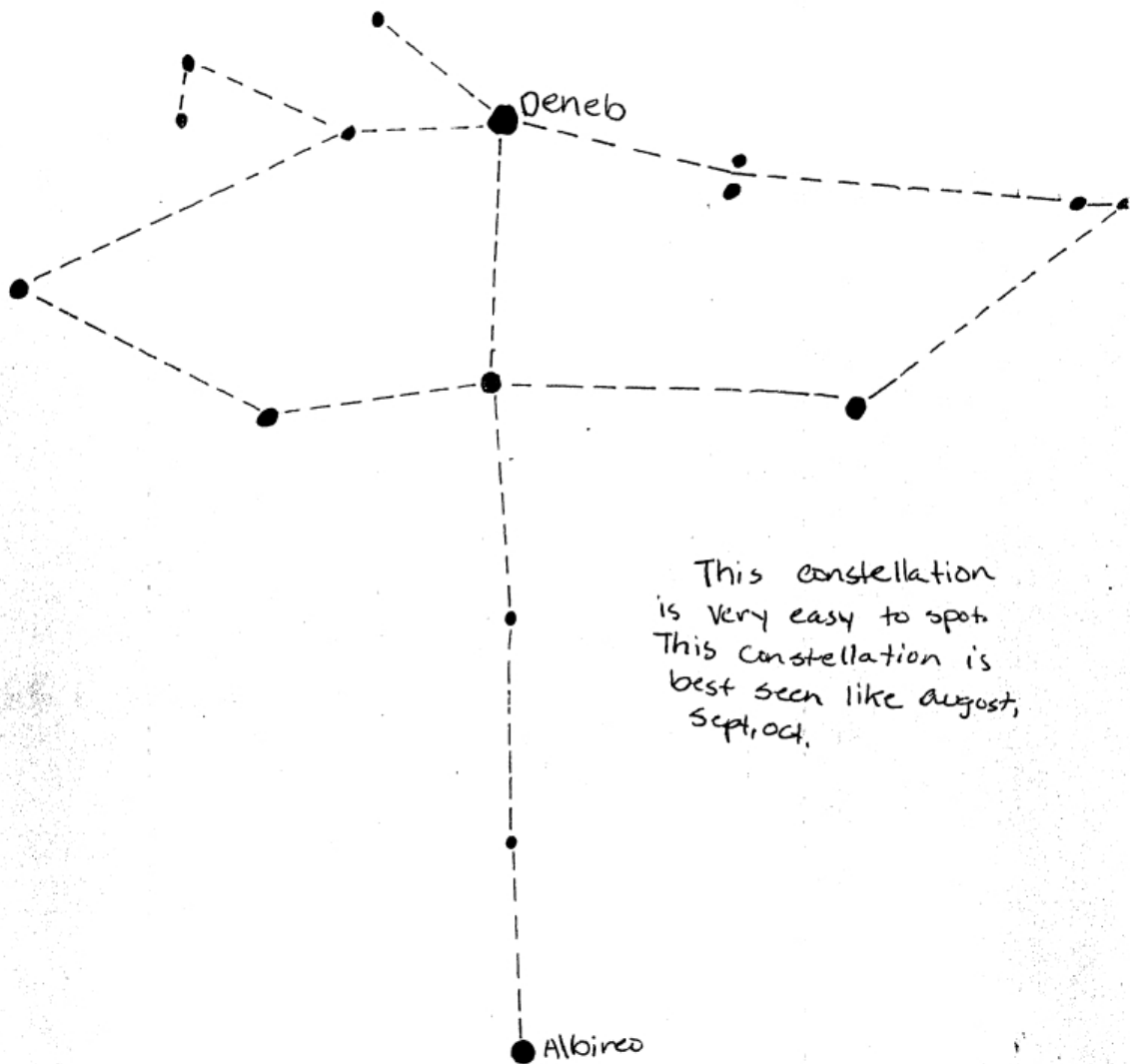
## Hunting dogs (canes venatici)

Cor Caroli



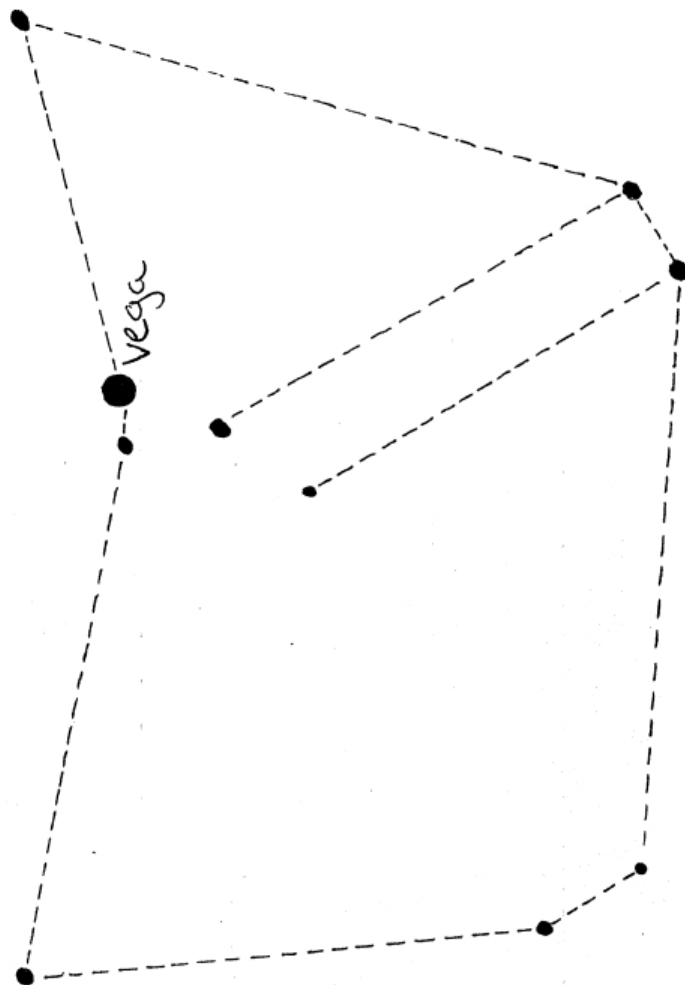
This constellation is very small and is found in front of the herdsman. It rises about 45° North.

## CYGNUS (the Swan)



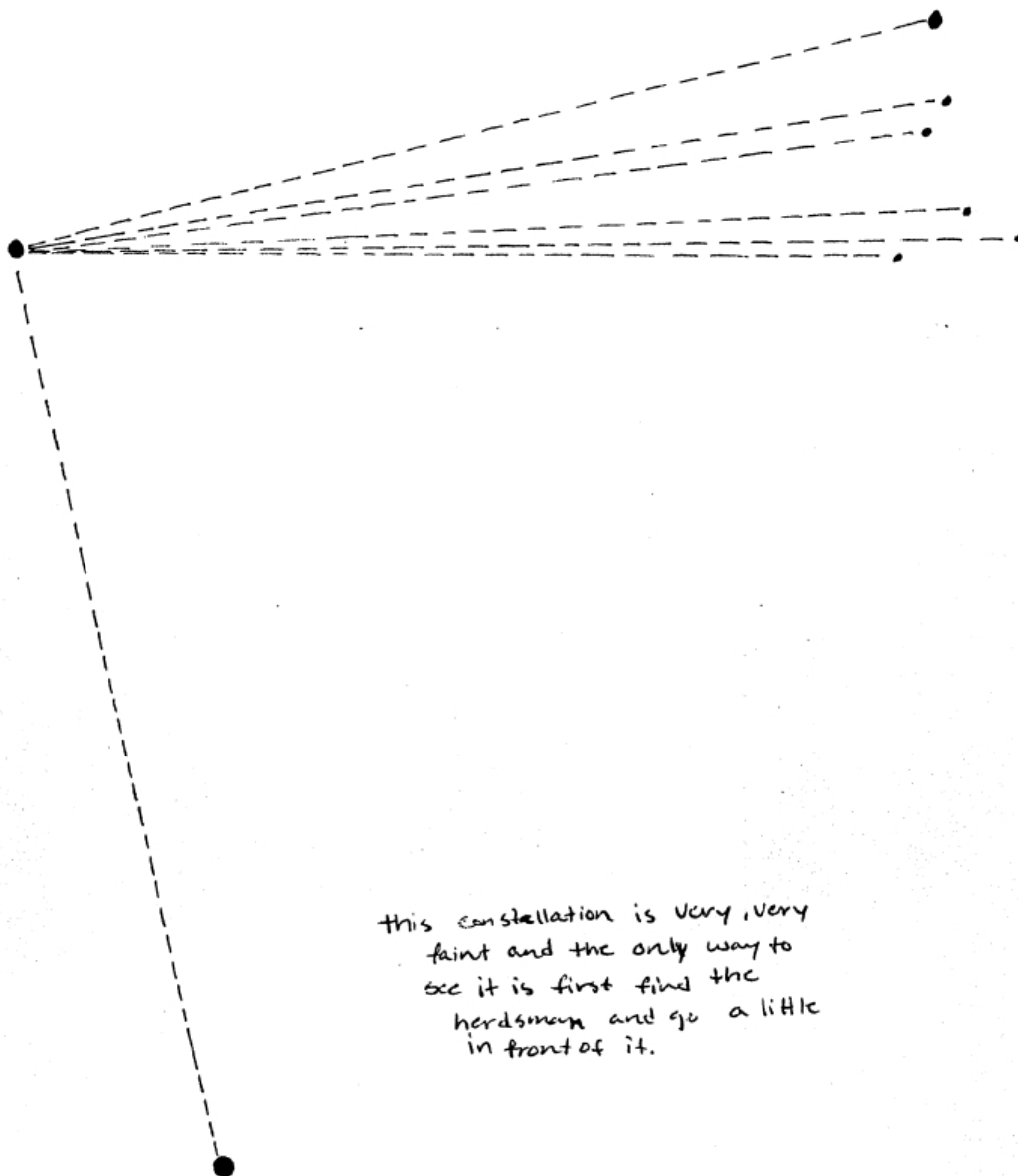
This constellation  
is very easy to spot.  
This constellation is  
best seen like August,  
Sept, Oct.

# Lyre (Lyra)



This constellation is a quite easy to spot because of Vega. Best time is sept, oct.

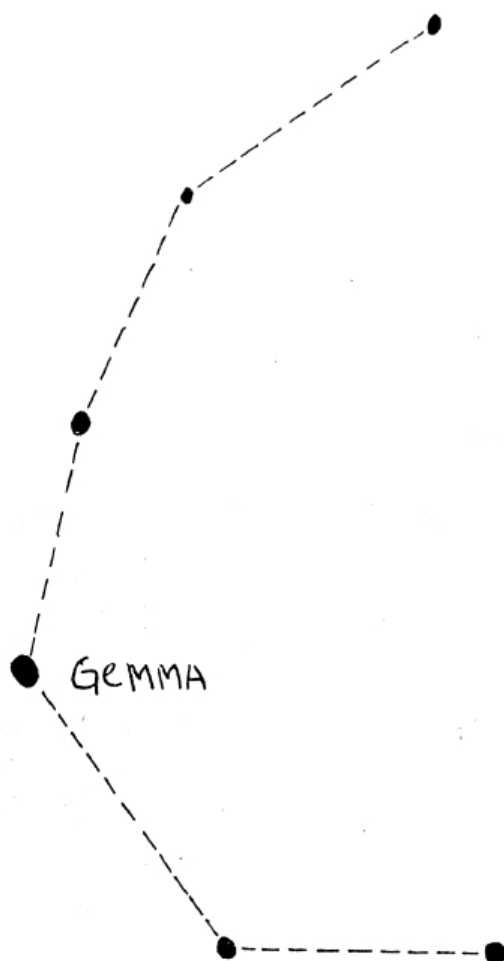
## Coma Berenices (Berenice's hair)

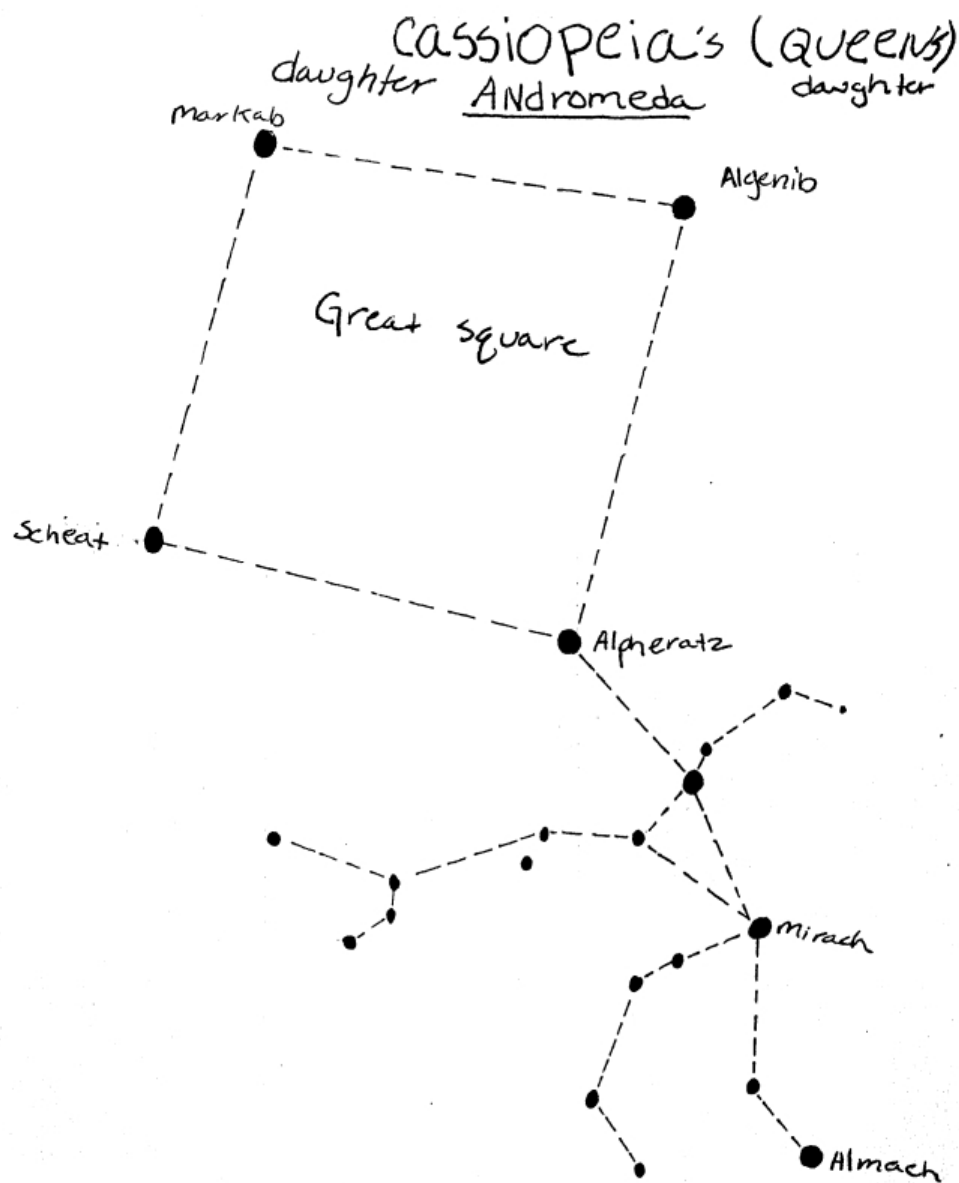


this constellation is very, very faint and the only way to see it is first find the herdsman and go a little in front of it.

## CORONA BOREALIS (Northern crown)

To find this constellation  
first find the herdsman  
because this is found  
Just above his head.





This is a rather bright constellation mainly because of the great square and its four bright stars. The foot end of this constellation rise North.



This magnificent constellation  
is bright and is the zodiac  
for June

A high-contrast, black and white photograph showing two people on a boat. One person is in the foreground, leaning over the side, while another person is visible behind them. The background shows a body of water and a mast structure.

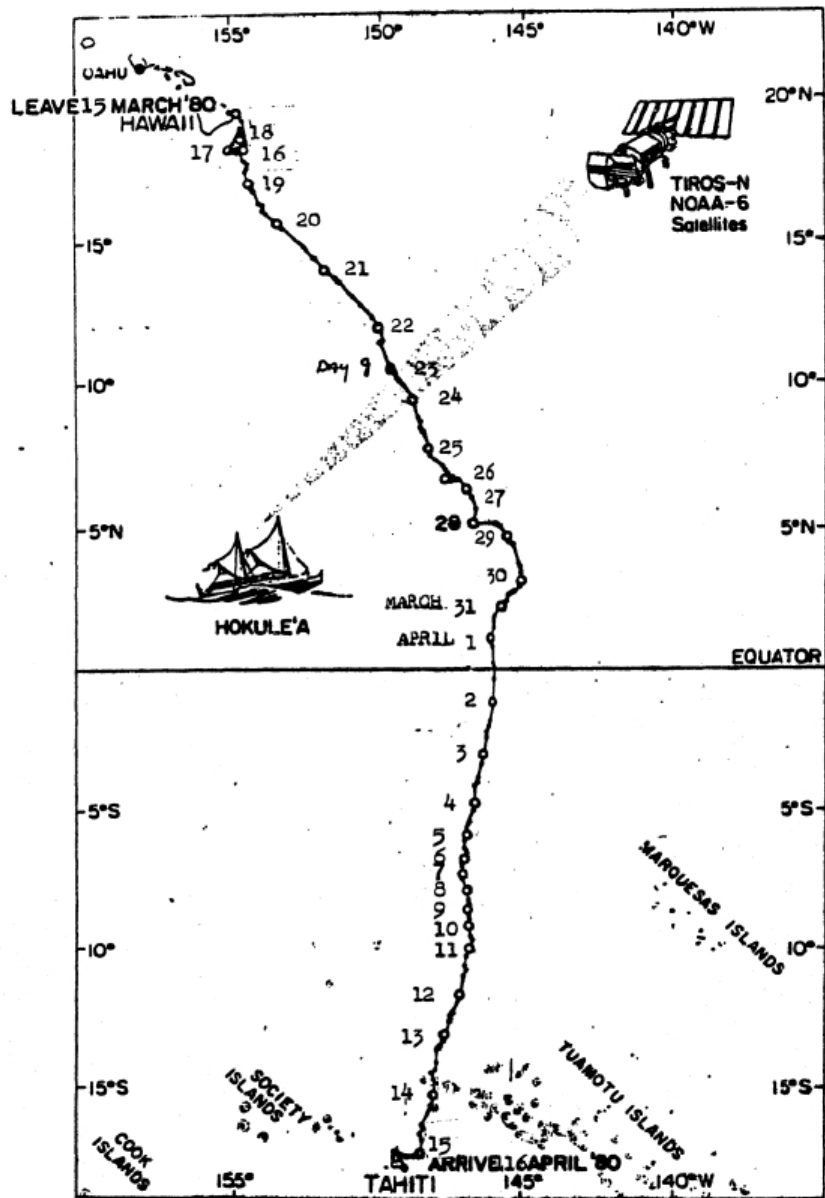


DOCUMENTS CAPTURED AS RECEIVED

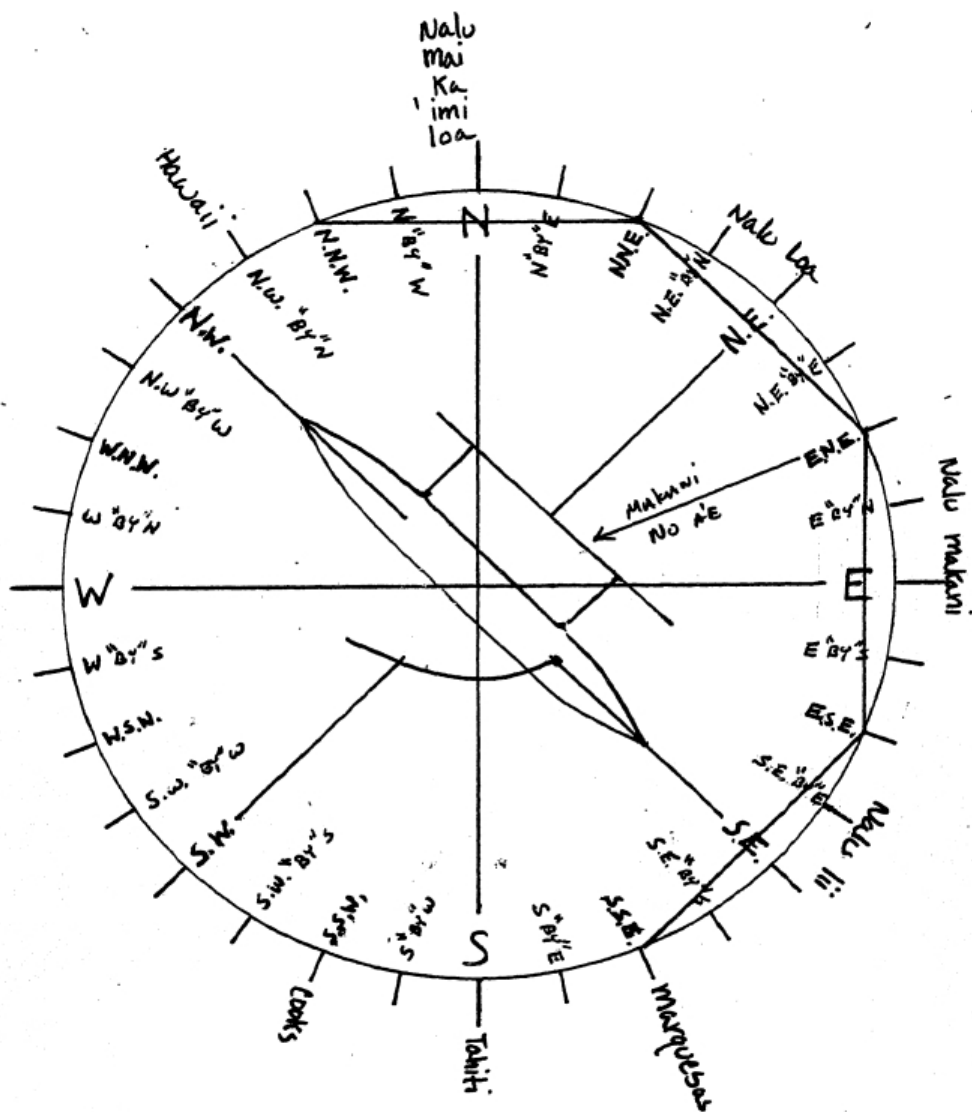


DOCUMENTS CAPTURED AS RECEIVED

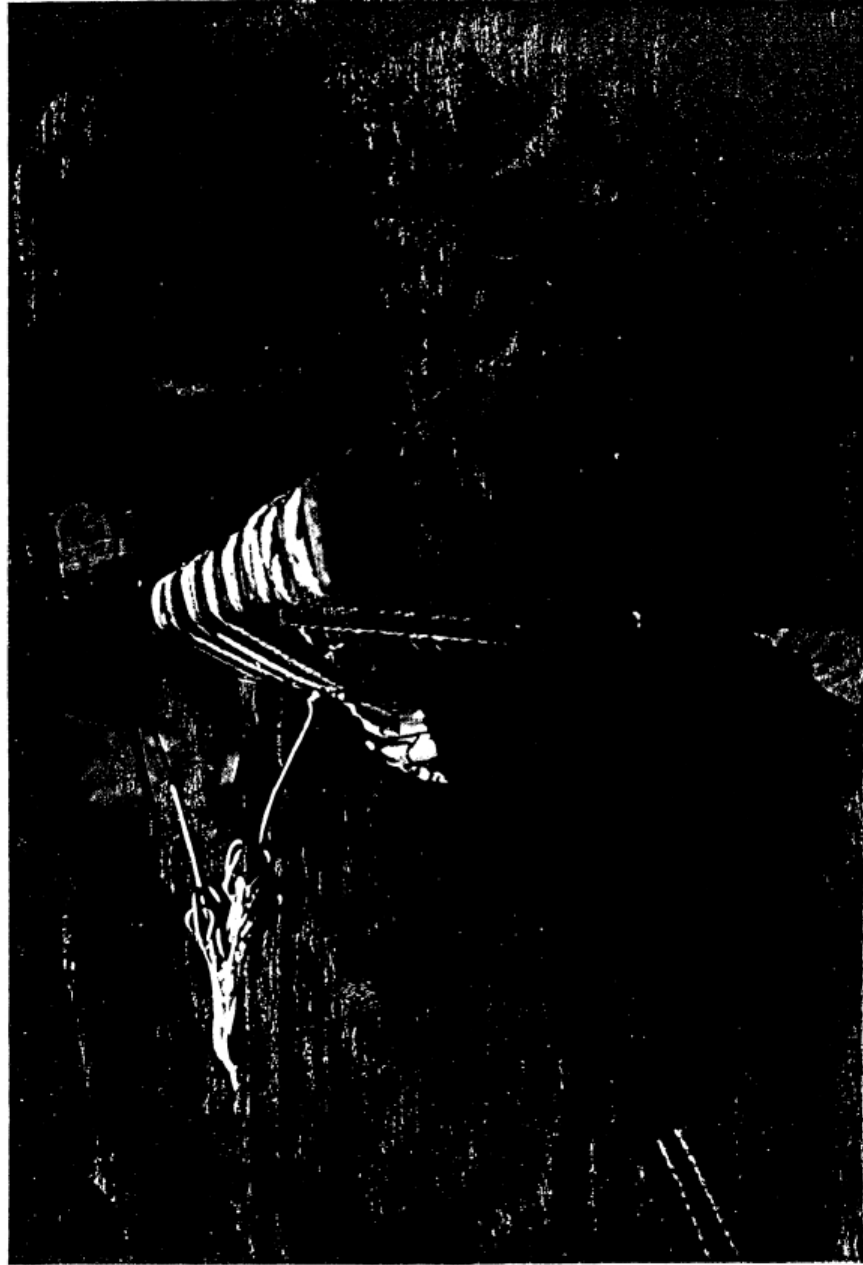


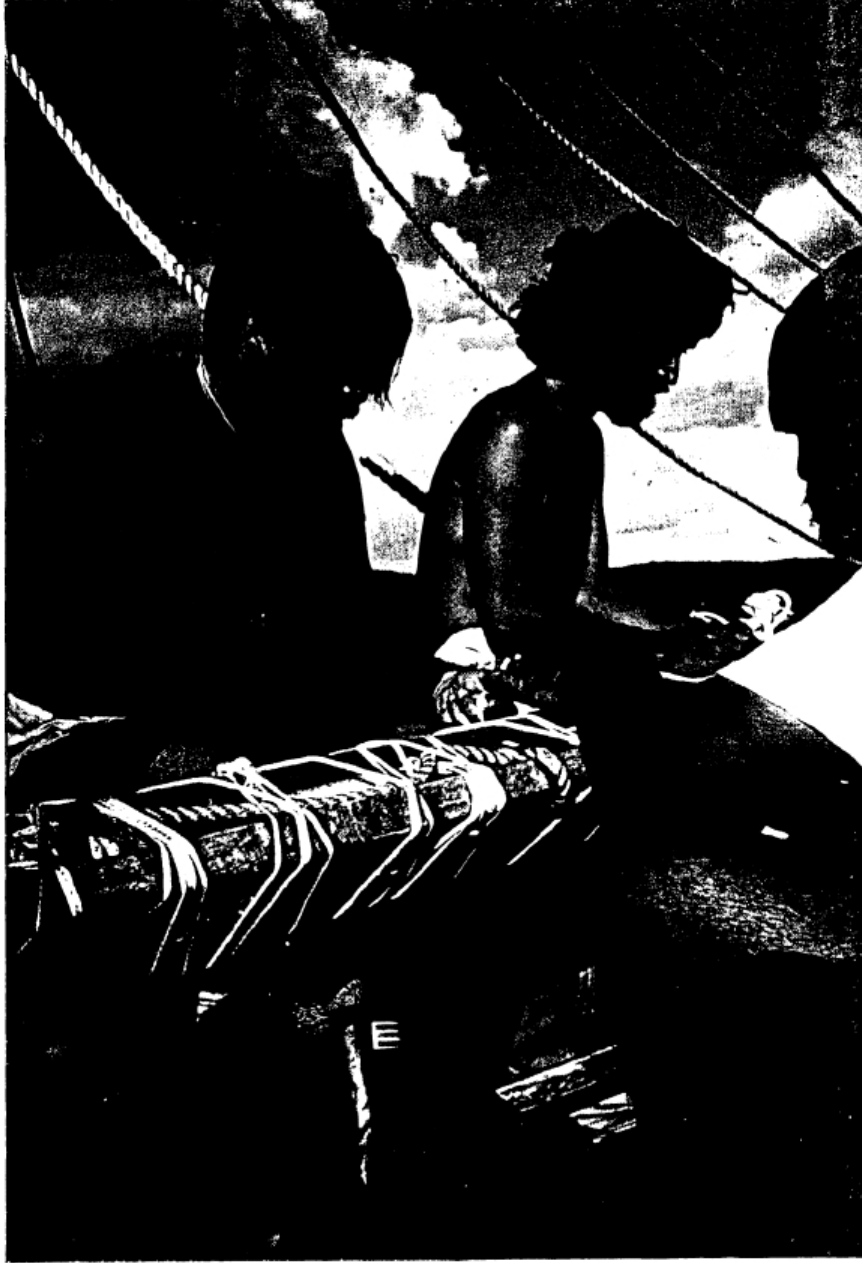


March 23 / Day 9



DOCUMENTS CAPTURED AS RECEIVED







MARCH 24 / Day 10

