

Hilo, Hawaii

15 MARCH 1980

TO

PAPEETE, TAHITI

16 APRIL 1980

HOKULE'A
NAVIGATION
REPORTS

Steve Somsen



DOCUMENTS CAPTURED AS RECEIVED



DOCUMENTS CAPTURED AS RECEIVED



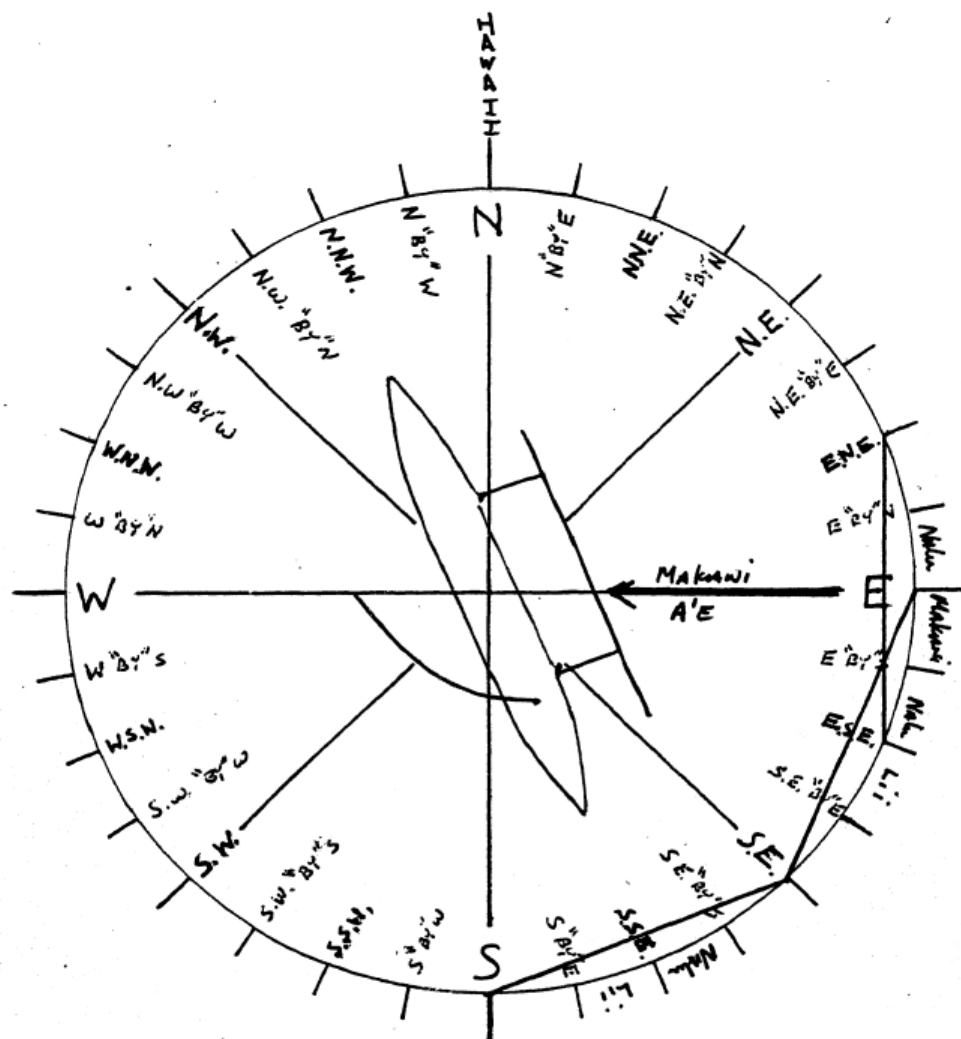
DOCUMENTS CAPTURED AS RECEIVED



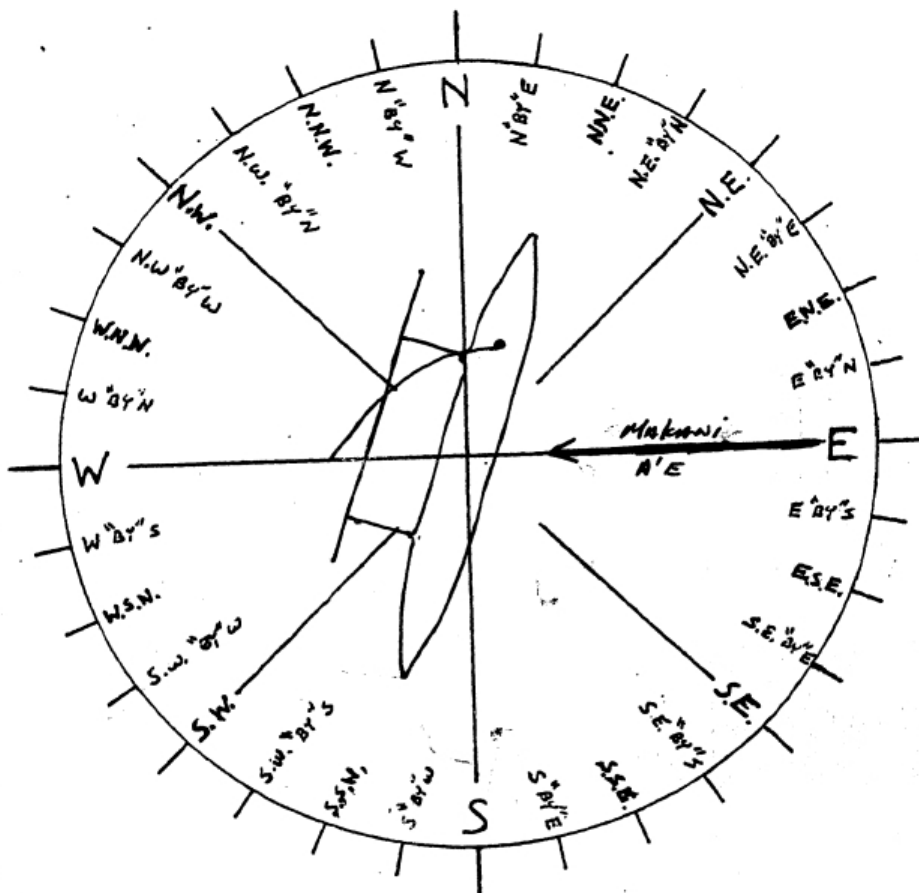


- MARCH 17 / Day 3

DOCUMENTS CAPTURED AS RECEIVED



Tack worth
"fixing"



DOCUMENTS CAPTURED AS RECEIVED



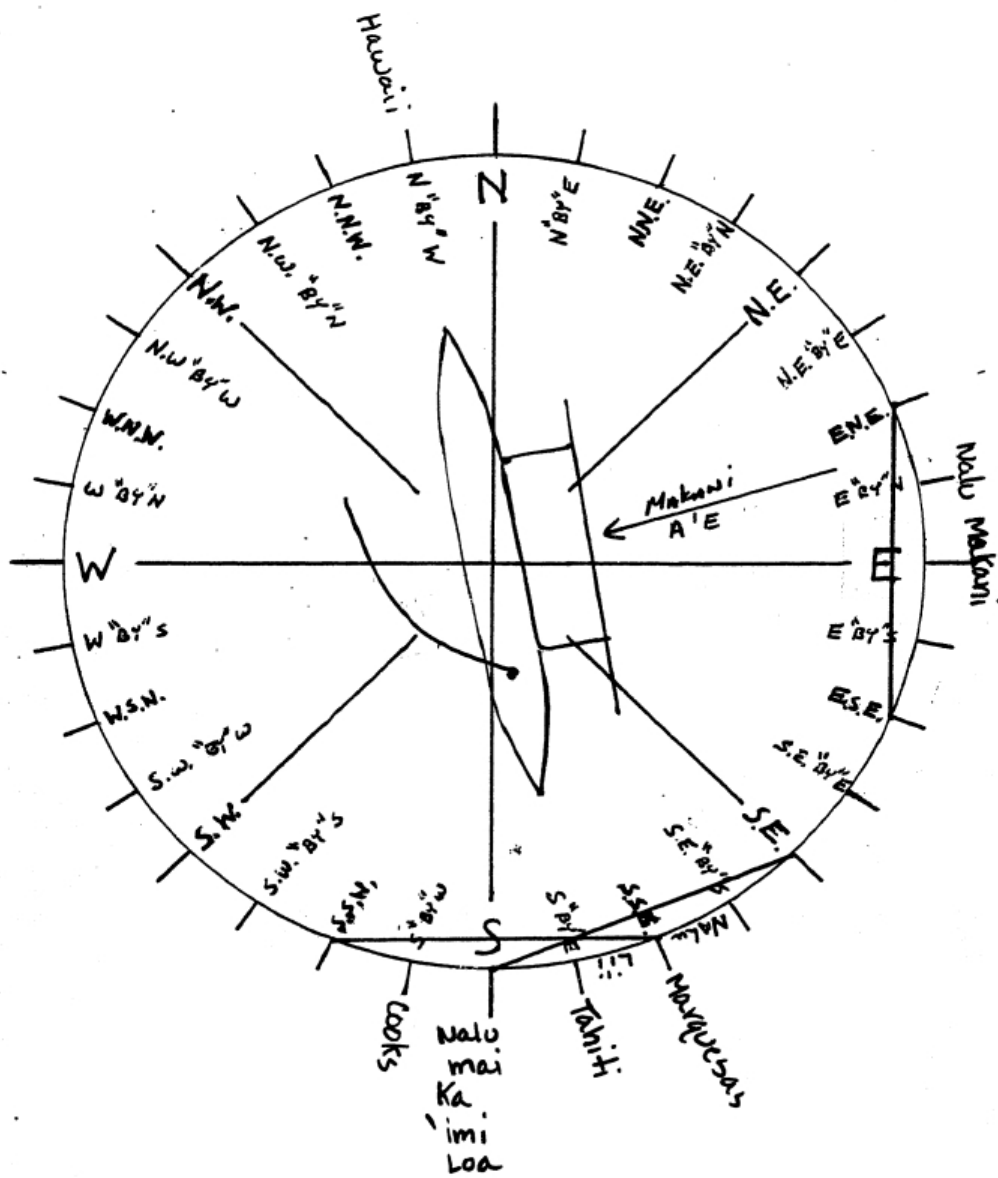
DOCUMENTS CAPTURED AS RECEIVED



DOCUMENTS CAPTURED AS RECEIVED



March 18 / Day 4



RADIO COMMUNICATION: Hokule'a - Ishka

TUESDAY

1. Time of fix

month: March date 18 time Sunset

2. Hokule'a position

MAP: SUNS IN SATAPUE SAR NOID
 therefore were heading towards
 turn at the place where
 Antares rises.

To Marquesas

SE NALFO

To Tahiti

SE HAKA

To Cook Islands

SW HAKA

To Hawaii

W. LO NW HAKA 1 1/2 SD

In the HOUSE of

17 N

3. Hokule'a status

Normal or

4. Hokule'a course & speed

SE HAKA + HAKA degrees True S 1/2 knots

5. Wind speed & direction

wind 22 knots SE (A - HAKA) directi

6. Primary wave height & direction

waves feet 1 HAKA direction

7. Secondary wave height & dir.

2nd waves feet 2 SE NALFO directic

8. Cloud type (cumulus etc.)

clouds (cumulus) 3 HAKA

9. Cloud coverage %

25 percent 4 NE HAKA (very small) infrequent

10. Cloud height

1000 1 thousand feet

11. Present weather

weather

12. Ishka status

n.a.

13. Predicted ETA

E.T.A. Papeete or

Month date time

14. Messages for Honolulu

HAKA - HAKA
 SEHAKA in HAKA
 HAKA in HAKA
 HAKA in HAKA

15. Next contact

Sunrise or Sunset or

16. Request messages from P.V.S.

Messages from P.V.S.

17. End Comms.

"Roger-Aloha to all aboard the Ishka-This is the sailing canoe Hokule'a WYB-8064 OUT."

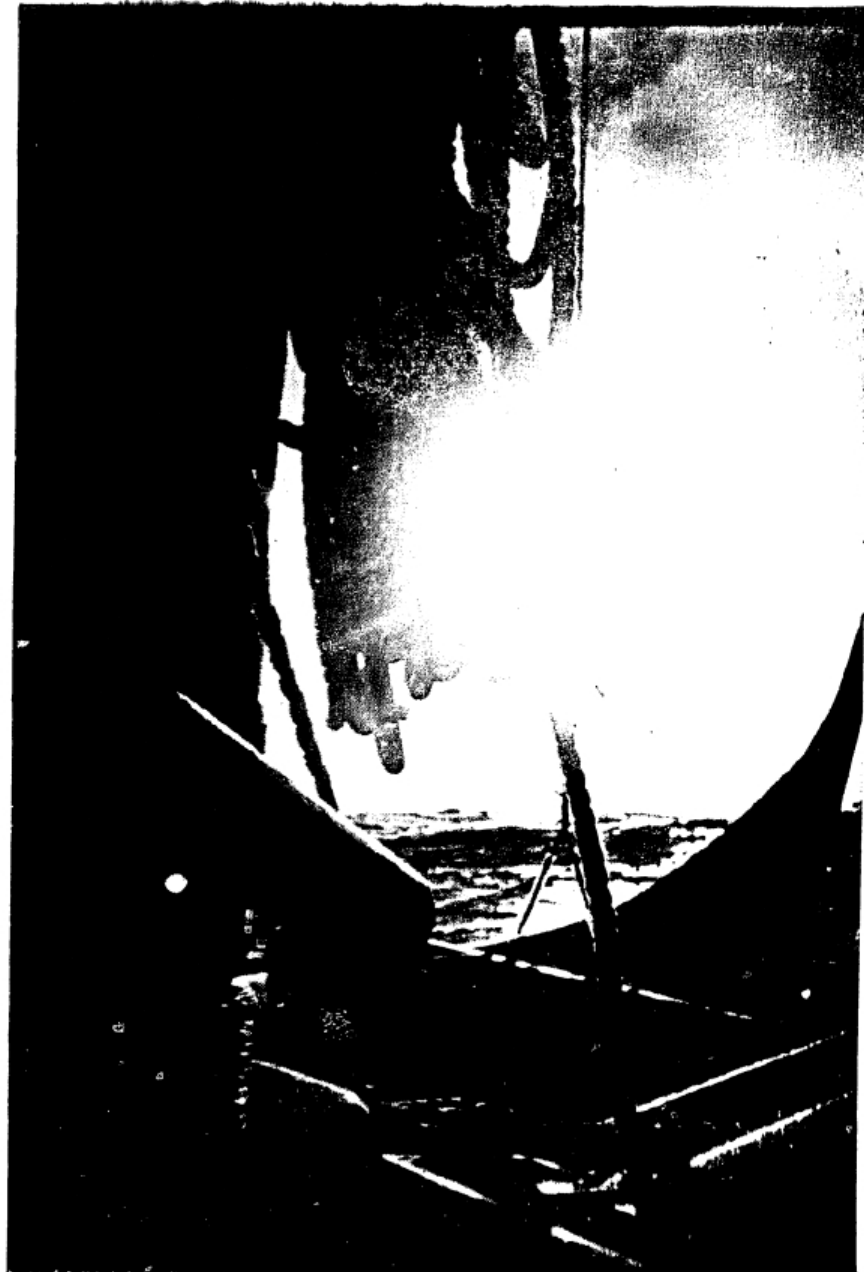
NAME: DATE: TIME:

RADIO OPERATOR: Please sign your name with the date & time of contact.
 File this form with the others in sequence.
 This will make up your radio log.

DOCUMENTS CAPTURED AS RECEIVED



DOCUMENTS CAPTURED AS RECEIVED



DOCUMENTS CAPTURED AS RECEIVED



DOCUMENTS CAPTURED AS RECEIVED



DOCUMENTS CAPTURED AS RECEIVED



DOCUMENTS CAPTURED AS RECEIVED



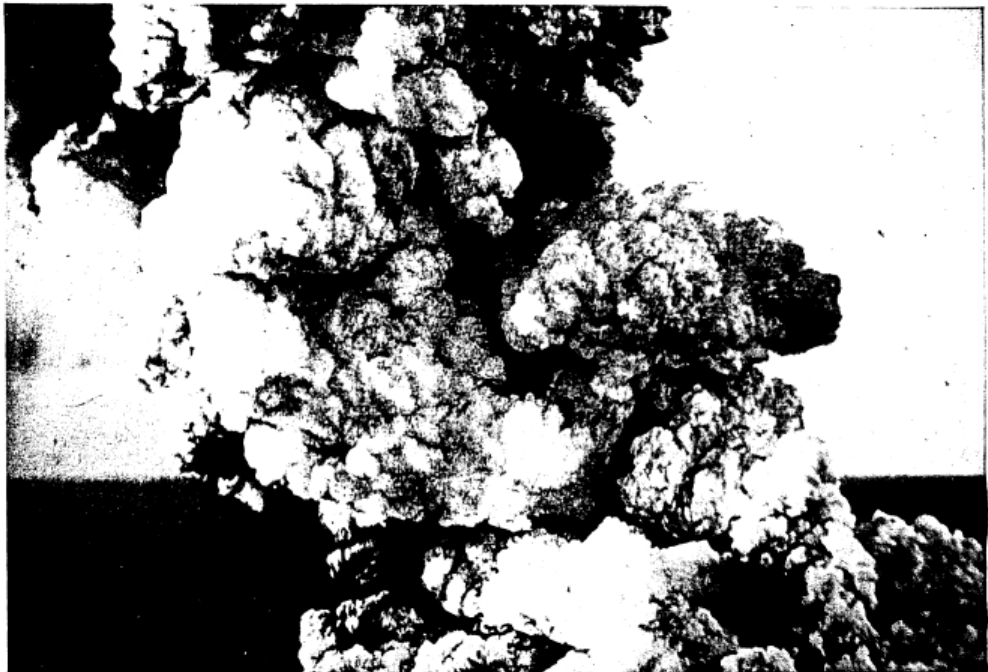
DOCUMENTS CAPTURED AS RECEIVED



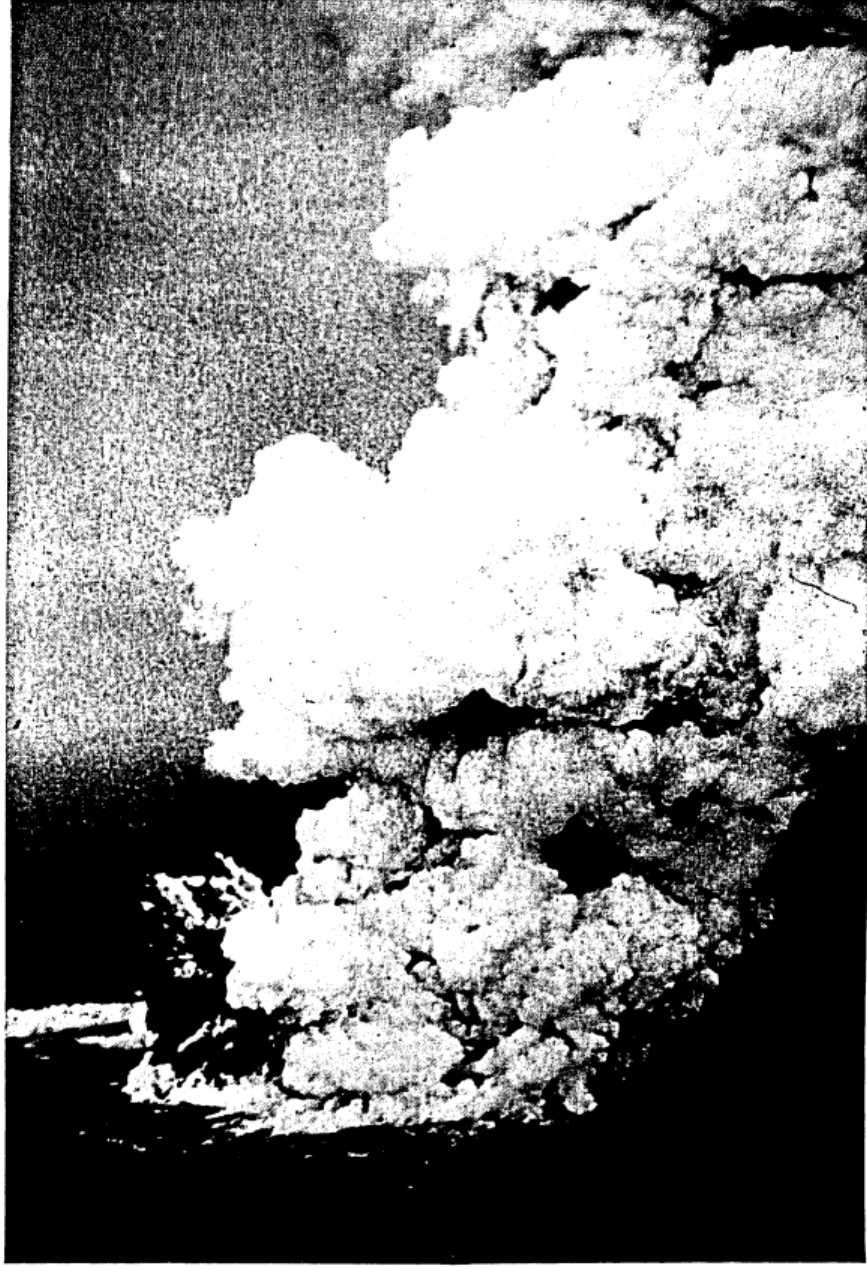
DOCUMENTS CAPTURED AS RECEIVED



DOCUMENTS CAPTURED AS RECEIVED



DOCUMENTS CAPTURED AS RECEIVED



DOCUMENTS CAPTURED AS RECEIVED



DOCUMENTS CAPTURED AS RECEIVED

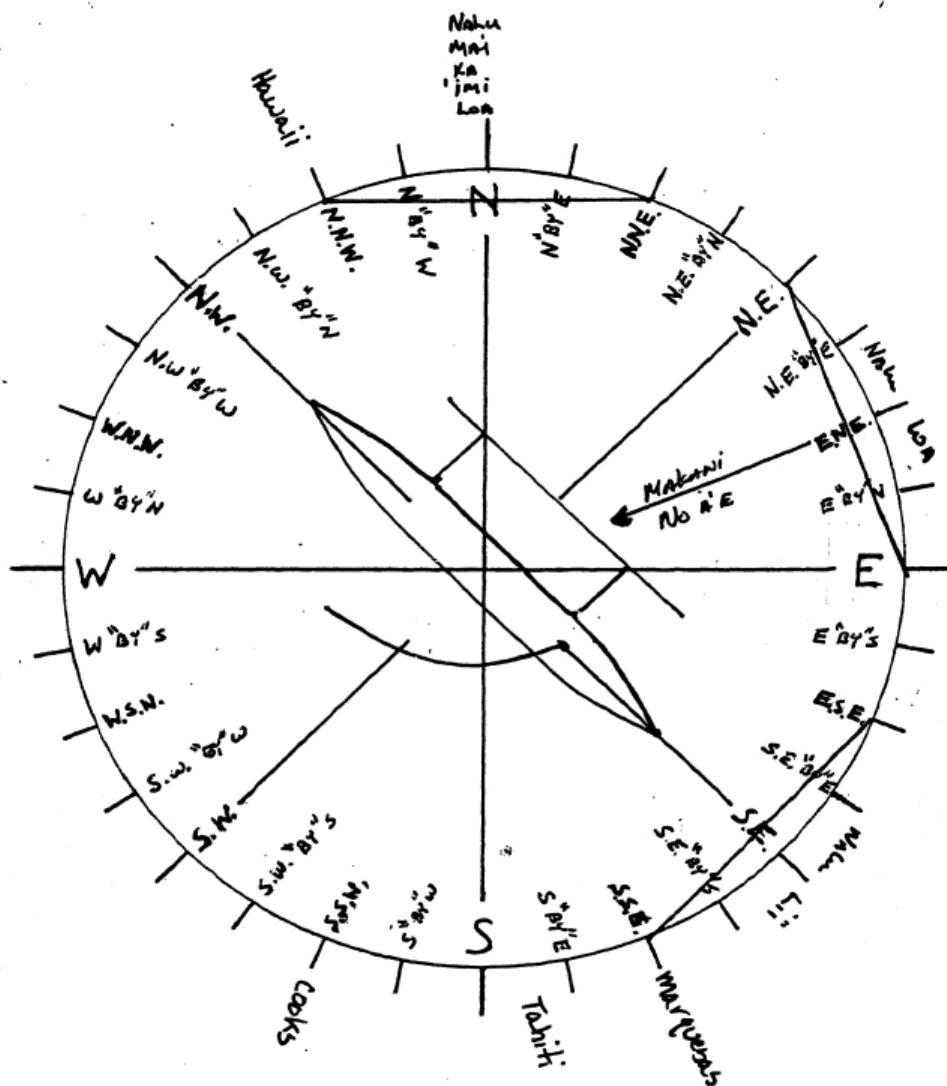


DOCUMENTS CAPTURED AS RECEIVED





MARCH 21 / Day 7



DOCUMENTS CAPTURED AS RECEIVED



DOCUMENTS CAPTURED AS RECEIVED



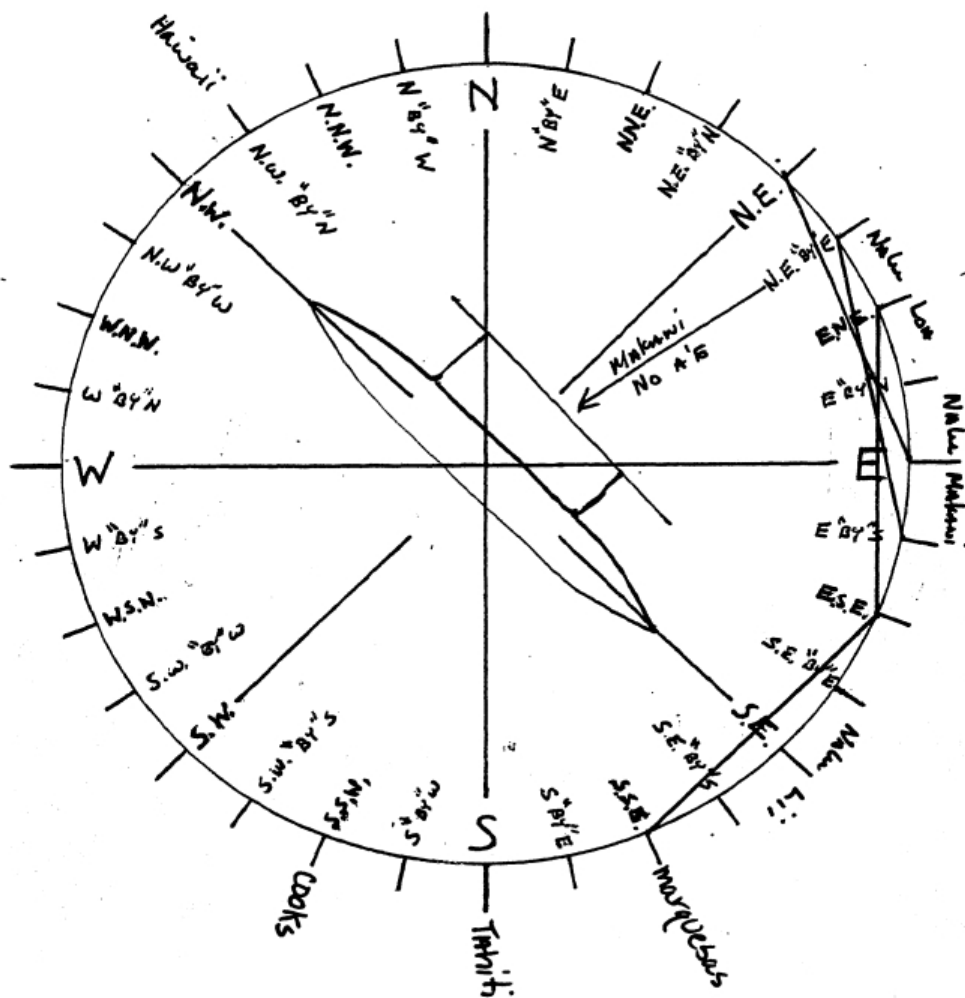


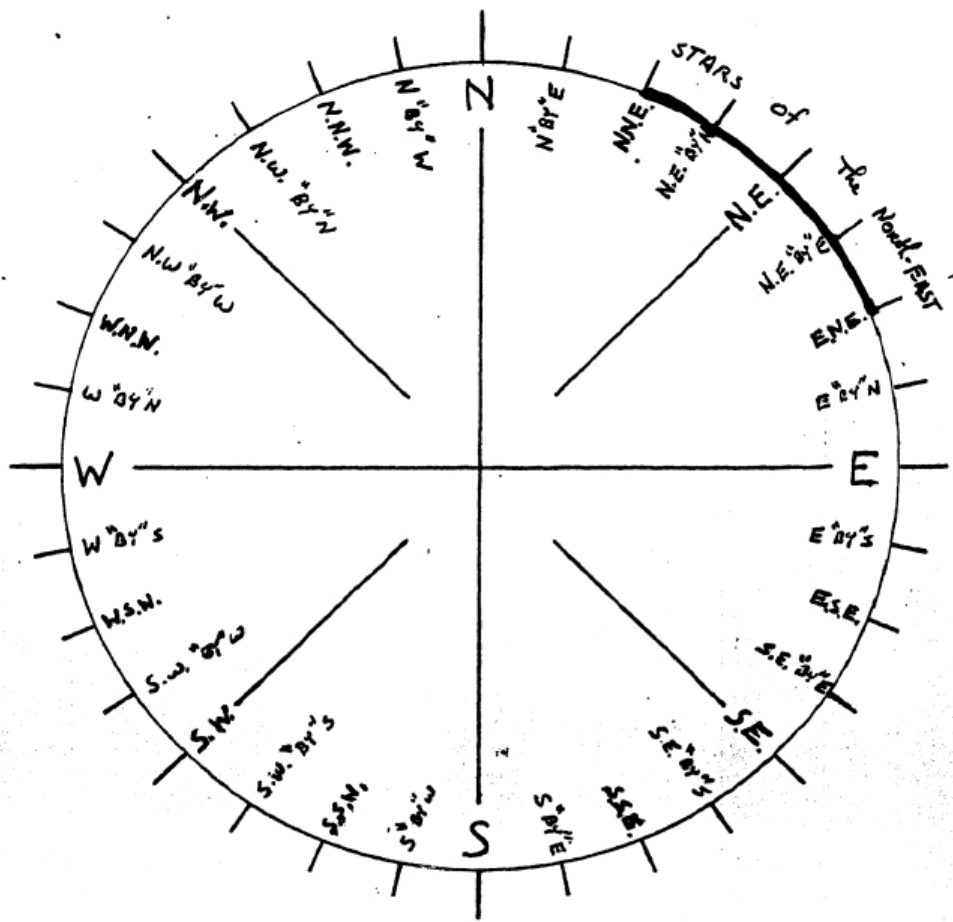
DOCUMENTS CAPTURED AS RECEIVED



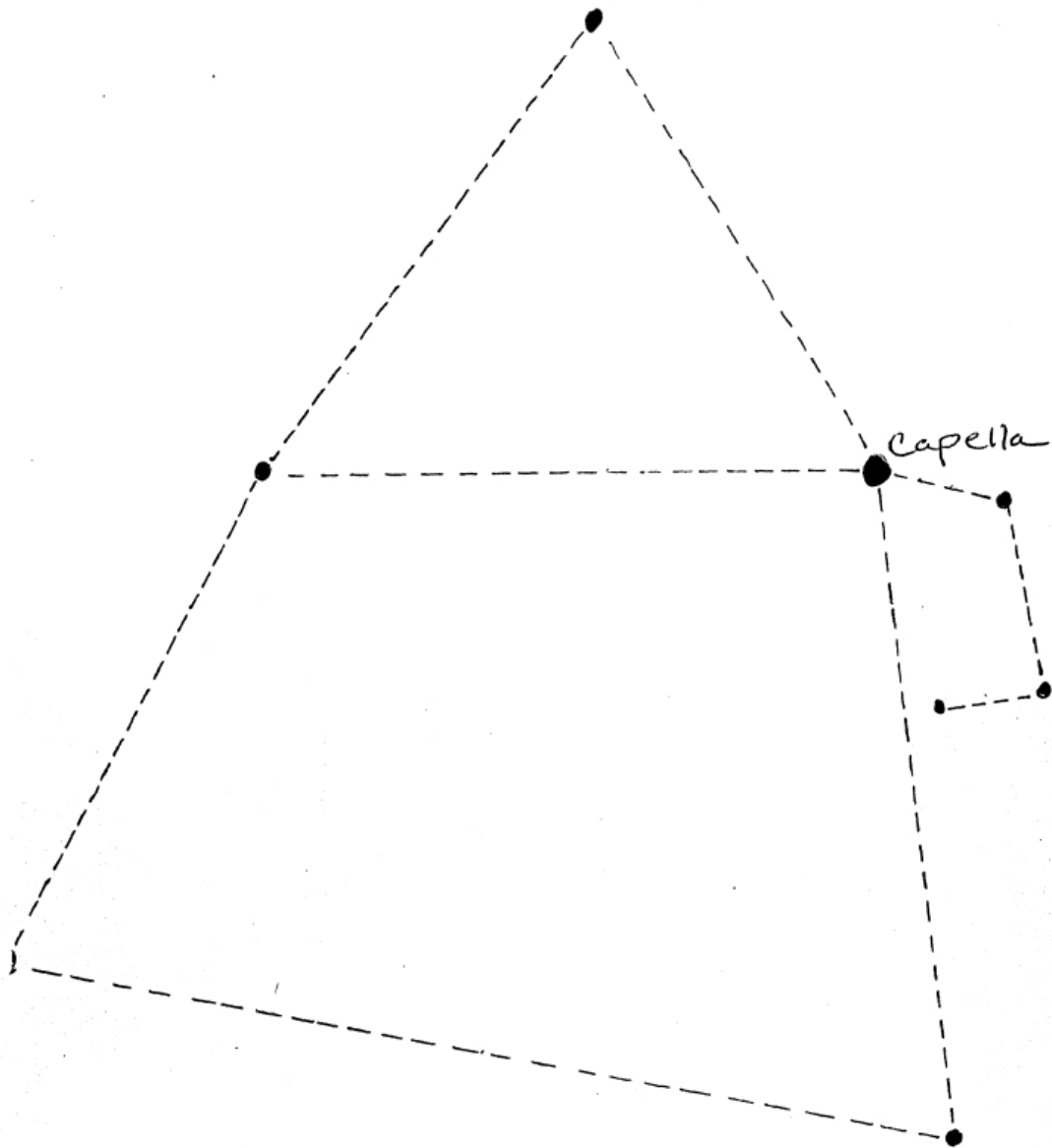


MARCH 22 / Day 8





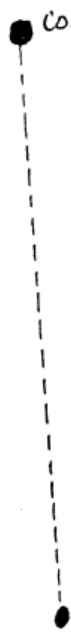
AURIGA (Charioteer)



This bright constellation
with a bright star capella
rises about 45° N. best
to see around Dec.

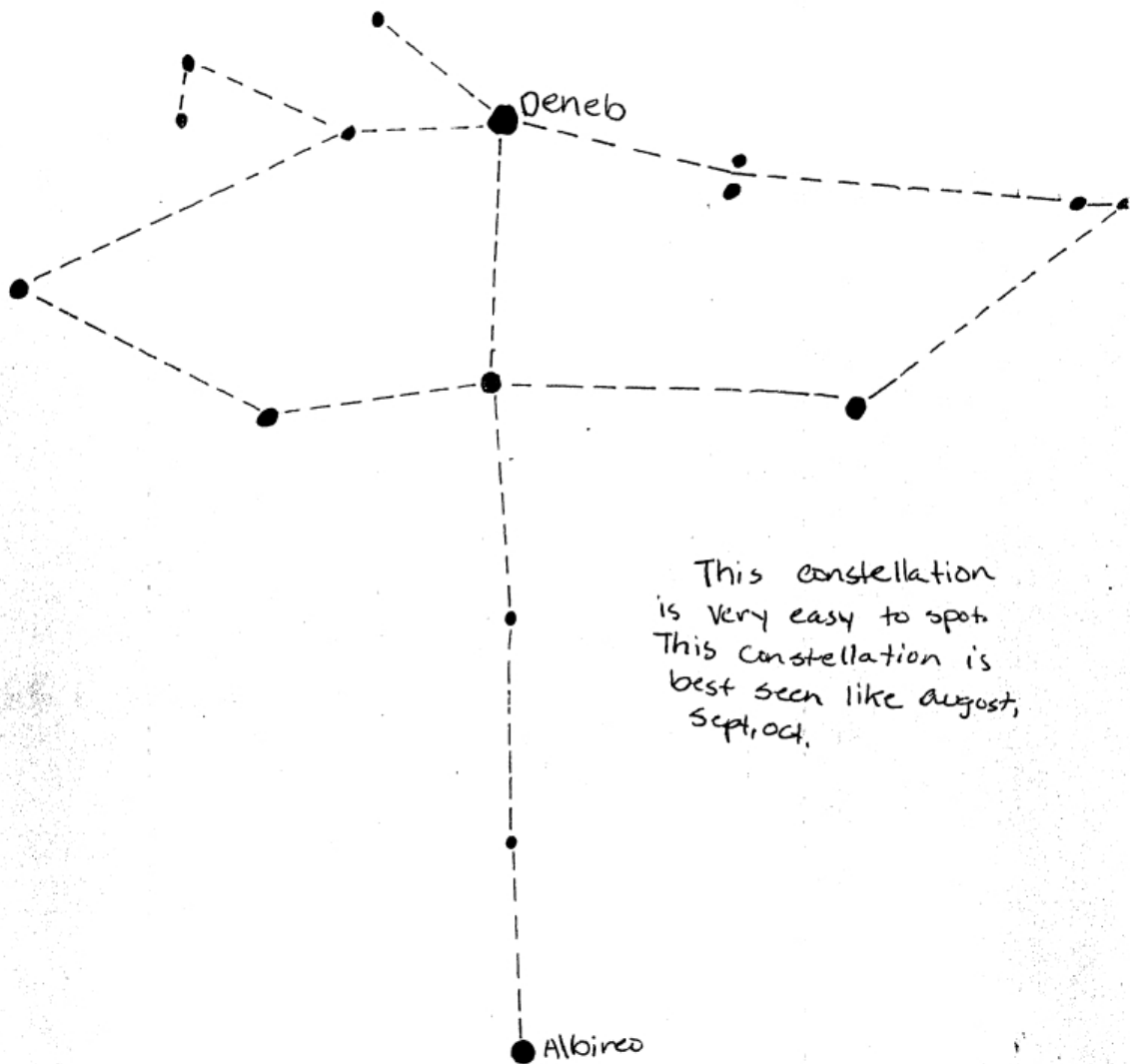
Hunting dogs (canes venatici)

Cor Caroli



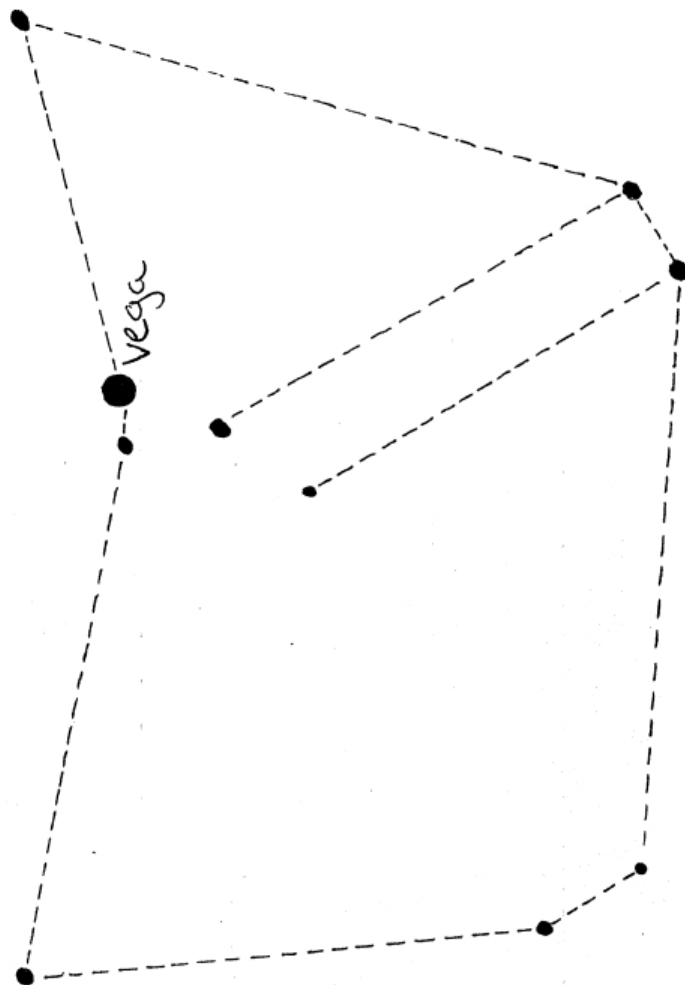
This constellation is very small and is found in front of the herdsman. It rises about 45° North.

CYGNUS (the Swan)



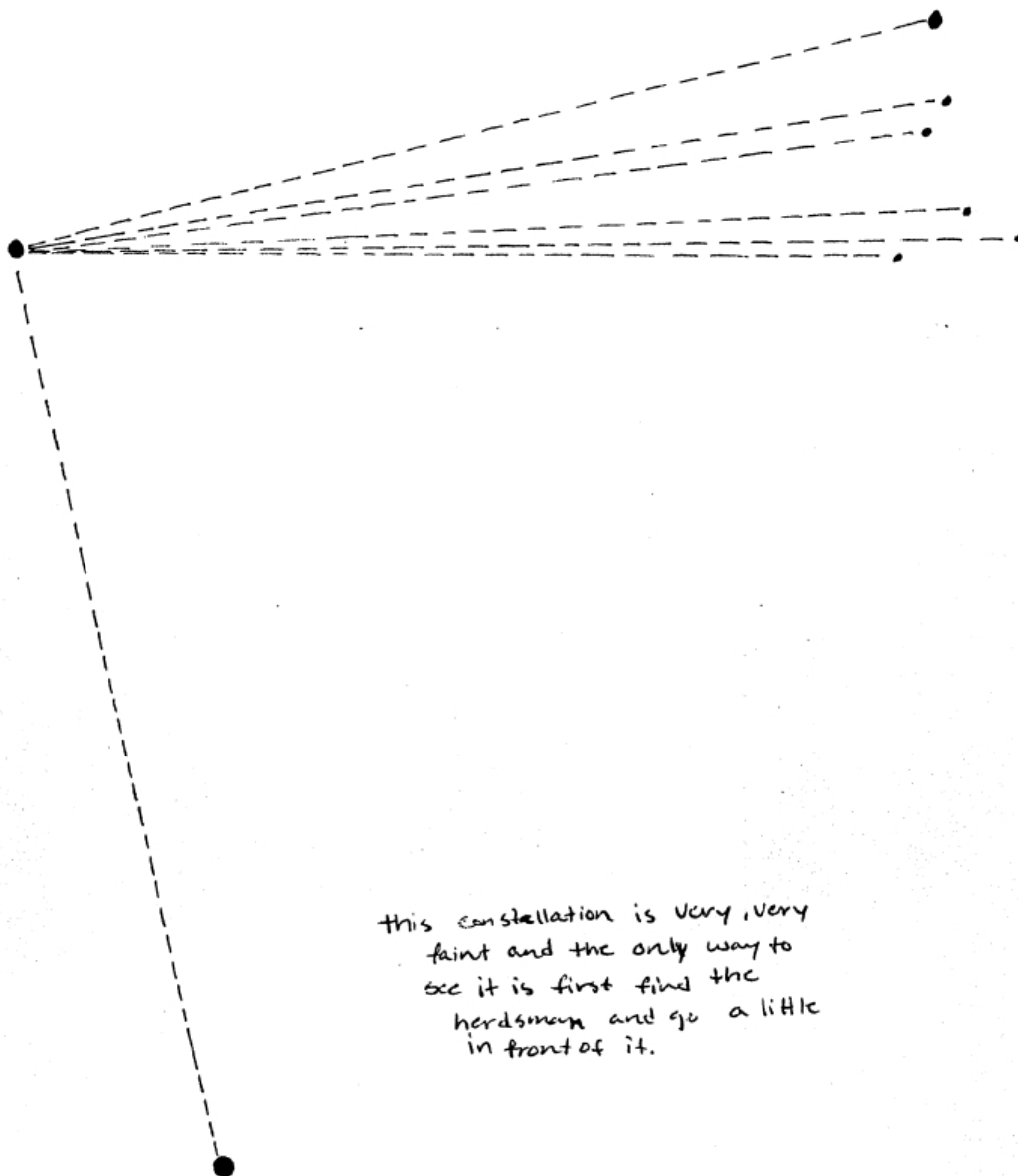
This constellation
is very easy to spot.
This constellation is
best seen like August,
Sept, Oct.

Lyre (Lyra)



This constellation is a quite easy to spot because of Vega. Best time is sept, oct.

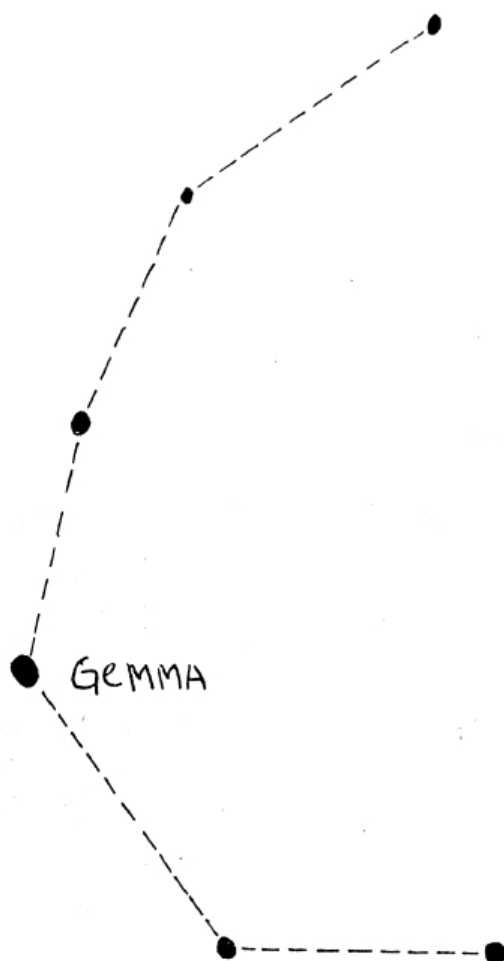
Coma Berenices (Berenice's hair)

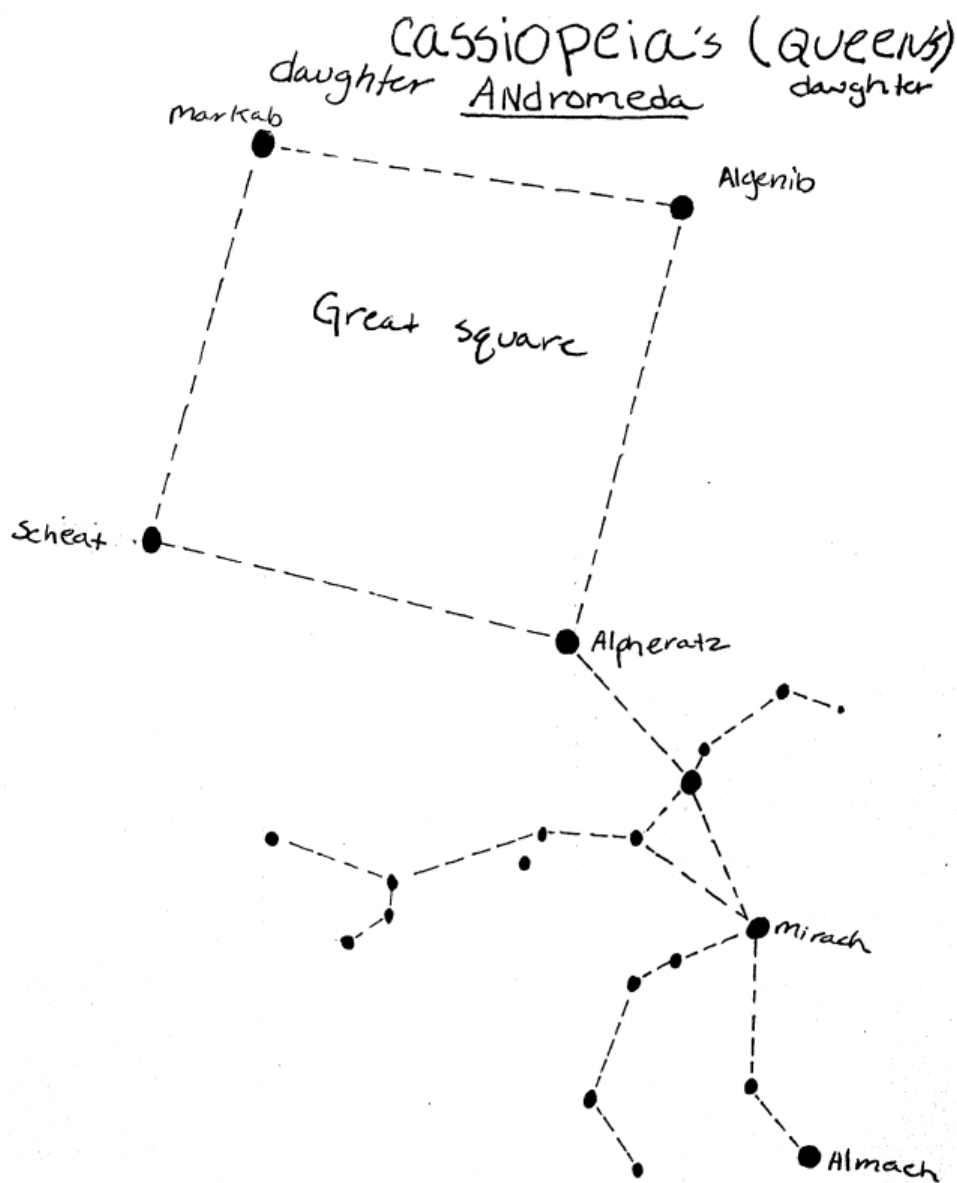


this constellation is very, very
faint and the only way to
see it is first find the
herdsman and go a little
in front of it.

CORONA BOREALIS (Northern crown)

To find this constellation
first find the herdsman
because this is found
Just above his head.





This is a rather bright constellation mainly because of the great square and its four bright stars. The foot end of this constellation rise North.



This magnificent constellation
is bright and is the zodiac
for June

A high-contrast, black and white photograph showing two people on a boat. One person is in the foreground, leaning over the side, and another is behind them, also leaning over. The background shows a body of water and a mast structure.

DOCUMENTS CAPTURED AS RECEIVED

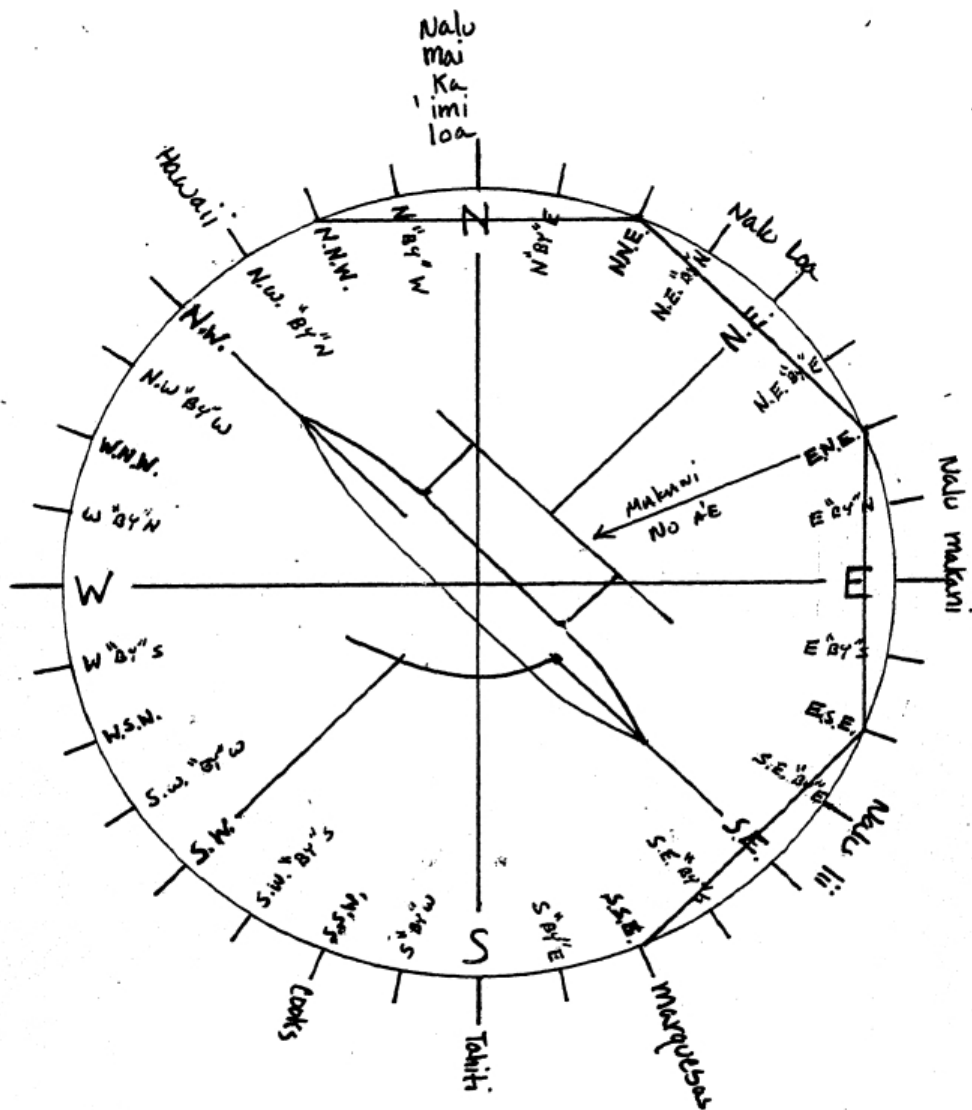


DOCUMENTS CAPTURED AS RECEIVED

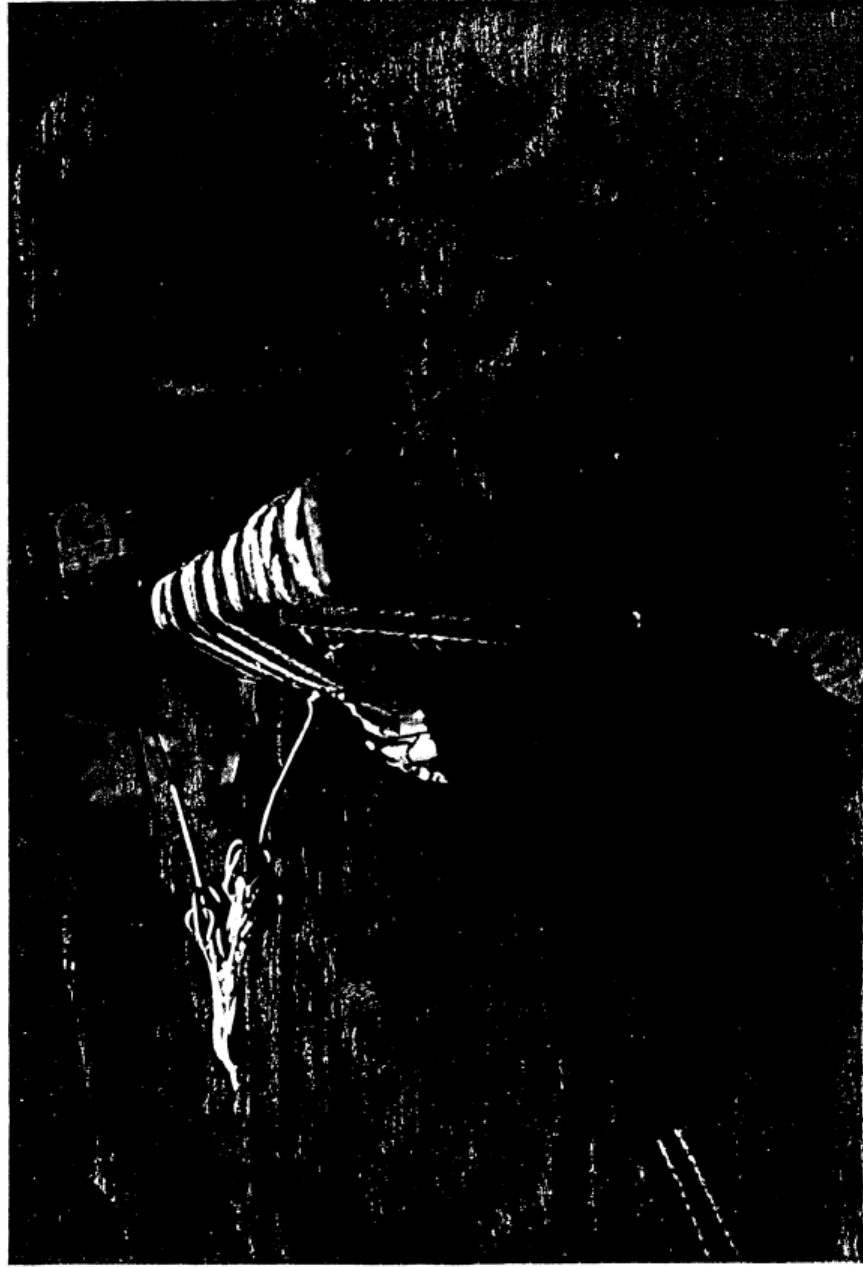




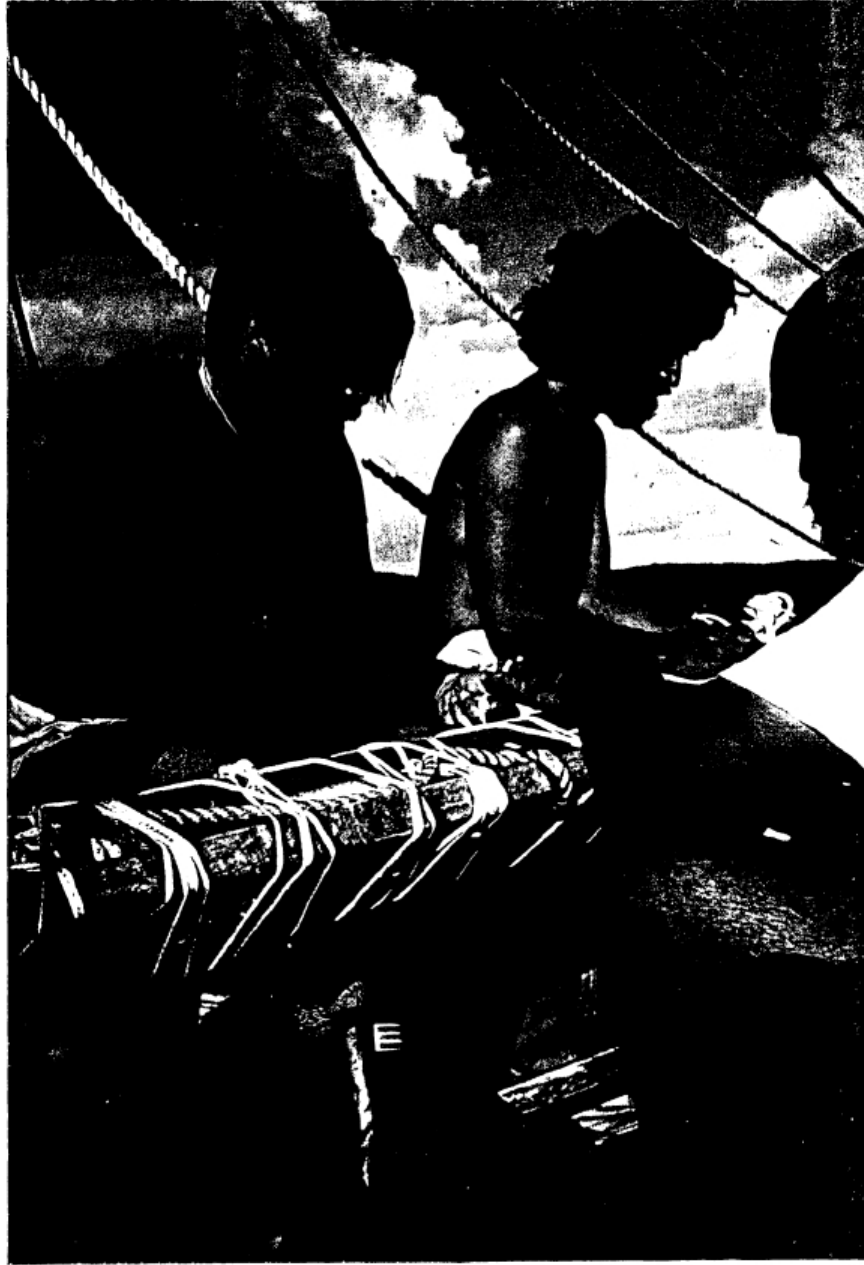
March 23 / Day 9

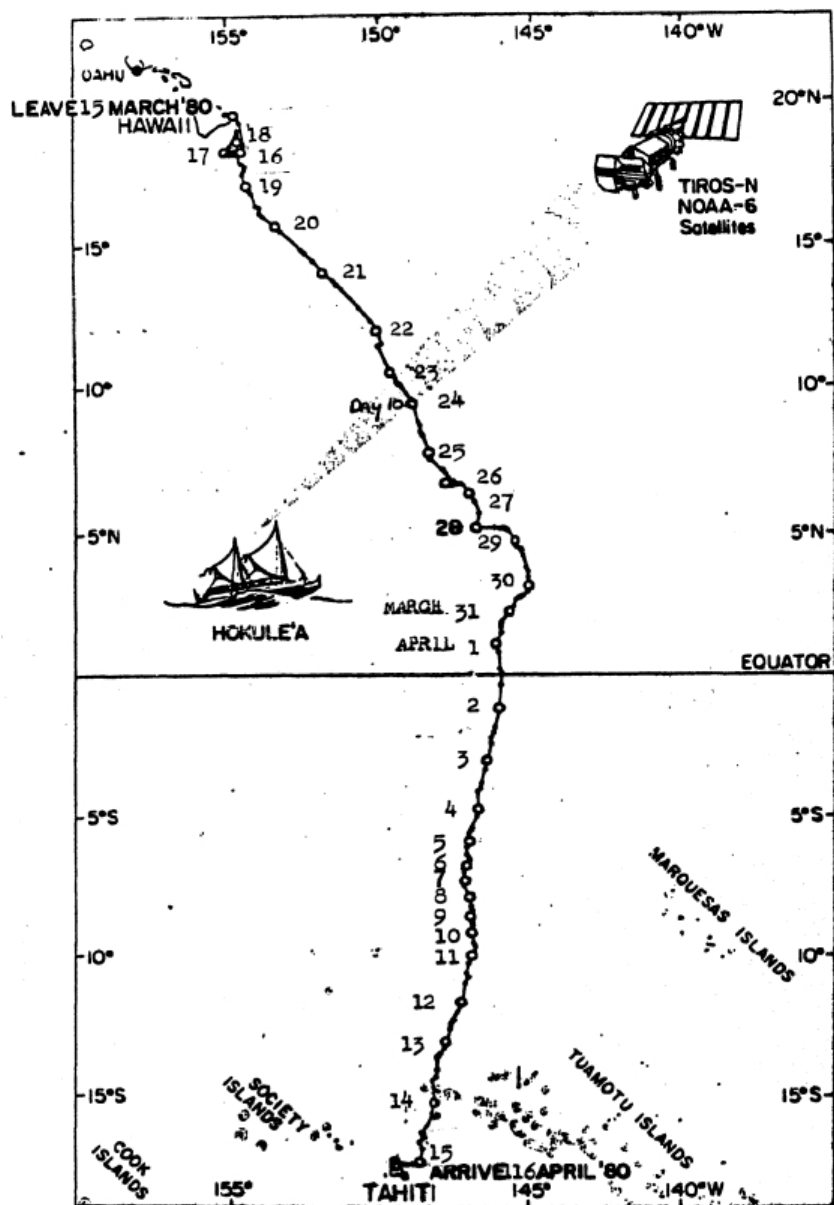


DOCUMENTS CAPTURED AS RECEIVED



DOCUMENTS CAPTURED AS RECEIVED





MARCH 24 / Day 10

