

October 20, 1985

TO: Cecilia Lindo
FROM: Marlene
SUBJ: UPDATE EDUCATION COMMITTEE

Aloha Cecilia,

For Monday nights meeting, Pinky would like to have an update on the following items:

- a) VIDEO-TAPED SLIDE PRESENTATION - by C . Larson
Has the slide presentation been distributed throughout the schools?
What is the status on the Cook Islands presentation?
- b) LAWRENCE HALL OF SCIENCE
Has the proposal been submitted to the National Science Foundation?
- c) BISHOP MUSUEM/PVS VAN
What is the status on this?

Look forward to seeing you on Monday and thanks for your help.

Love,



(Forgot this one)

- d) What is the status of Ray Lanterman's map of the Pacific?

100



Actual size 40" x 26" Trim

24 January 1986

MEMO TO: Cecilia, Marlene, Lee Kyselka, Virginia Elliott,
Gordon, Jerry Muller, Loko and Mahealani.

Because of discussions about the map after you folks saw the preliminary color sketch, I propose the following revisions:

- 1) Make the Polynesian Triangle larger so the students have as much room as possible to do their plotting.
- 2) Delete the teaching material re: how to plot latitude and longitude.
- 3) Replace that deleted material with an inset at a larger scale, showing the islands from Tahiti to the Cooks. This is appropriate, because several islands in that relatively small area were visited on the second leg, and it would be difficult to plot them on the big map.
- 4) Delete North and South America, Asia, Guam, etc., as they are not relevant to plotting.

P.V.S.

DOE

KAM
schools

NOTE: With such deletions, we can print in 3 colors (blue ocean, red outline of Polynesian Triangle, and black for the basic map) instead of 4 colors. Elimination of the fourth color -- yellow -- will favorably affect the cost, although not greatly.

ATTACHED HERewith is a rough sketch showing the above changes.

I will need the approval of the Education Committee (and the DOE and Kamehameha Schools if they are still in the act) for these changes. I cannot get a revised printing estimate without this approval. - - - -

I MUST ALSO HAVE:

- 1) A definite commitment as to how many maps to order. If we don't print enough on the first run, a second printing will entail more cost.
- 2) An OK of the title of the map and any other wording to be shown on it.
- 3) The exact wording of appropriate credits if DOE and Kam Schools assist with the financing and desire such credit.

Since the first thing the printer has to do is set type for me to put on the final drawing, I must have all the exact wording NOW. If I commit the job without it, it means I'd have to go back to the printer later for additional typesetting -- at an extra charge.

PVS

- 4) A purchase order from the Society after I get an amended estimate from the printer.

Ray Lanterman

POLYNESIAN VOYAGING SOCIETY
EDUCATION COMMITTEE MEETING
JUNE 27, 1985
KAMEHAMEHA SCHOOLS
HERITAGE ROOM

Attendance

Fred Cachola	Libby Oshiyama	Lokomaika'i Snakenberg
Cecelia Lindo	Mahealani Pescaia	
Coleen Murakami	Suzanne Ramos	

NATIONAL SCIENCE FOUNDATION (NSF) PROPOSAL

1. As reported by Suzanne Ramos:
 - . Dr. Duckworth, Director of Bishop Museum, has given his approval of the "projected" proposal for Star Lab.
 - . Will Kyselka and Libby Oshiyama have provided ideas and information for the proposal.
 - . Receiving assistance in writing the proposal from Lawrence Hall of Science via Carry Snider.
 - . Attached is additional information on NSF proposal entitled, "Star Lab". (Attachment #1)
 - . PVS is the primary presenter of the proposal.
2. DOE input and support is needed.
3. Proposal to NSF is due on August 15.
4. Next steps:
 - . Narrative is completed and being reviewed by Will Kyselka.
 - . Budget is being taken care of by Suzanne Ramos.
 - . Letters of support need to be gathered:
 - Bishop Museum via Suzanne Ramos
 - DOE (Claudia Chun and Miles Muraoka) via Fred Cachola
 - Lawrence Hall of Science via Suzanne Ramos.
 - . Committee to review proposal on August 1.
 - . Need to get cooperation and input from Teachers and DOE.
 - . Part of the instructional package will cover the present voyage so need to keep in contact with voyage scribes (Dr. Ben Finney and Dr. Dixon Stroup).
 - . 6-9 months for approval by NSF followed by 6 months of development and the dissemination/implementation.
5. Suzanne Ramos will be on vacation from July 1-25. Libby Oshiyama

will try to complete Suzanne's PVS work till she returns.

Part-time Staff or Contractual Services

1. Education Committee consists of volunteers who are fully employed in various fields.
2. Committee generates many ideas and tasks which require staff for continuity, consistency and timely completion.
3. Fred will make a tentative budget which will include a part-time position to present to the board after committee approval.

Charles Larson's Proposal

1. The committee accepts the concepts and principles of Larson's proposal.
2. The committee agrees to the need for more resource materials relevant to our students.
3. Fred and Libby will ask Charles Larson for more specific details on his proposal before asking the board to support and adopt his project.
4. A formal contract should be drawn to reflect what the PVS will receive at the end of the project - be it:
acknowledgment in his book,
complimentary copies, or
royalties or income from publication.
5. Copy of his proposal is attached. (attachment #2)

Report from Curriculum Design Sub-Committee

1. Instead of developing a textbook, committee decided to develop modules.
2. Proposed course outline has been developed and was distributed at meeting. (attachment #3)
3. John Kofel is having a conference with Pacific area educators in August or September. We may be able to link up with his conference to discuss our needs and potential resources.
4. Next steps:
Continue brainstorming and getting grass root input from interested "Master" teachers and other resource people on the

- feasibility of the modules (intent, content, etc.).
 - . Have conference with John Kofel's contacts.
 - . Develop a high school elective course, "Pacific Island Studies".
5. Lokomaika'i had some suggestion for a high school course:
- . Focus of course should be narrowed to study the island groups visited by Hokule'a.
 - . Course outline is good but overwhelming for an 19-week semester course.
 - . Need to look at the kinds of students who will take this course and keep the content relevant.
 - . Need to have a balance between the intellectual/academic aspects and the experiential components (arts/crafts, dance, music, food, study, etc.).
 - . Develop objectives and actual parameters before actual development of materials.
6. Committee is still testing ideas with Elaine Takenaka, DOE Social Studies specialist, and High School teachers.
7. By October 1, should submit to the Education Committee the following information:
- . scope/sequence
 - . content
 - . grade level
 - . objectives
 - . feasibility
 - . format/support/resources.

Meeting adjourned at 4 p.m.

Next meeting will be announced with agenda.

Notes by Coleen Murakami.

Attachment #1

NATIONAL SCIENCE FOUNDATION GRANT

BACKGROUND

The Lawrence Hall of Science (University of California, Berkeley) and the Bishop Museum received a grant from the National Endowment for the Humanities in the amount of \$185,000 to create an exhibition and participatory planetarium program on THE WAYFINDING ART: OCEAN VOYAGING IN POLYNESIA. This is a cost sharing program; the total cost of the project is more than the NEH award.

The Holt Planetarium at the Lawrence Hall of Science is a leader in developing participatory programs, and has received national recognition for its innovative contributions. In contrast to typical passive museum exhibits, at which visitors spend an average of 45 seconds, research conducted at Lawrence has shown that involving visitors actively increases "engaged time" to ten or fifteen minutes and leads to significant learning.

Members of the Polynesian Voyaging Society are serving as consultants to the project, and the exhibits and program will include the voyages of the HOKULE'A.

Prototype models of the exhibit will be built in Berkeley and tested at both the Lawrence Hall of Science and the Bishop Museum beginning in Sept. of 1986. Refinement will take place on the basis of the results. By mid-1986, the exhibit will be available to other museums throughout the country. During the next five years 3.5 million visitors are expected to become involved in THE WAYFINDING ART.

As a result of a planning meeting with Lawrence Hall of Science and the Bishop, an idea for a traveling program for school children in Hawaii developed.

PROGRAM CONCEPT

This is a brief description of an educational program that would bring the story of the HOKULE'A to students throughout the state in ways that might be more effective than books and films, and which would more fully utilize the educational materials already produced by PVS, and perhaps form the impetus for creating new materials. This project could be an outreach program which brings together science education and cultural enrichment.

The need for such a program can be demonstrated in several ways. First of all, there is a national movement for science education; the National Science Foundation is particularly interested in projects that focus on the lower grades "because those are the years where the attitudes of preadolescents begin to develop." NSF is also interested in engaging students in "hands-on" science

and mathematics experiments. Second, all seven Hawaii Dept. of Education School Districts reported there is a gap in the area of library resources in Hawaiian Studies suitable for use by younger students from kindergarten through grade 8. This is a gap area not only for Hawaiians but for all of Hawaii's children. The per pupil book ratio is considerably below average in schools identified as having a high percentage of Native Hawaiians.

This project would feature a traveling planetarium (an inflatable dome and planetarium projector) which seats 30 students. The planetarium show will have to be developed. It could be a version of Will Kyselka's Polynesian Skies (Bishop Museum) with participatory activities included.

Before the planetarium arrives at a school, a teacher education program could be held. The program would provide teachers with activities to prepare their students to more fully appreciate information provided in the planetarium program. Some very good activities have already been developed and published in the book "Polynesian Seafaring Heritage." The program could provide each participating teacher with a copy of this book and a hands-on workshop in how to do the activities. The best workshop is one which gets teachers to do the activities before teaching them.

Other activities could supplement the program. Students could make their own planetariums by punching holes in the bottom of a paper cup to represent Maui's Fishhook, and then holding a flashlight over it in a darkened room. Simple math activities could be devised which feature the distance the Hokule'a travels to a destination, for example.

DETAILS

Grant application due dates: August 15 and December 15
Comment: have everything ready by June 28

Starlab: (traveling planetarium)
information is on the way from ---
Learning Technologies Inc.
estimate: \$6,000 or \$7,000 per unit

NEEDS

Participating agencies: Bishop Museum
Polynesian Voyaging Society
The Kamehameha Schools
Suggest we use DOE as consultants

a letter of support from Hatanaka.

We need planning sessions to work out the details of the proposal. Who will be in this group? Suzanne Ramos, Will Kyselka, Walter Steiger, Libby Oshiyama, Fred Cachola?

Project time: two or three years

Allow time (three to six months) and personnel in
the proposal to---

develop curriculum

print materials

design workshop for teachers (suggest we hire Cary
Sneider as consultant on this because of his
experience in participatory exhibits)

train people to give workshops to teachers and

to give presentations to students

test the program in one or two schools and make
changes if necessary

Scope of project

How many Starlabs?

What are the target schools? Target schools with Hawaiian
population and low resource materials at first.

Develop Budget

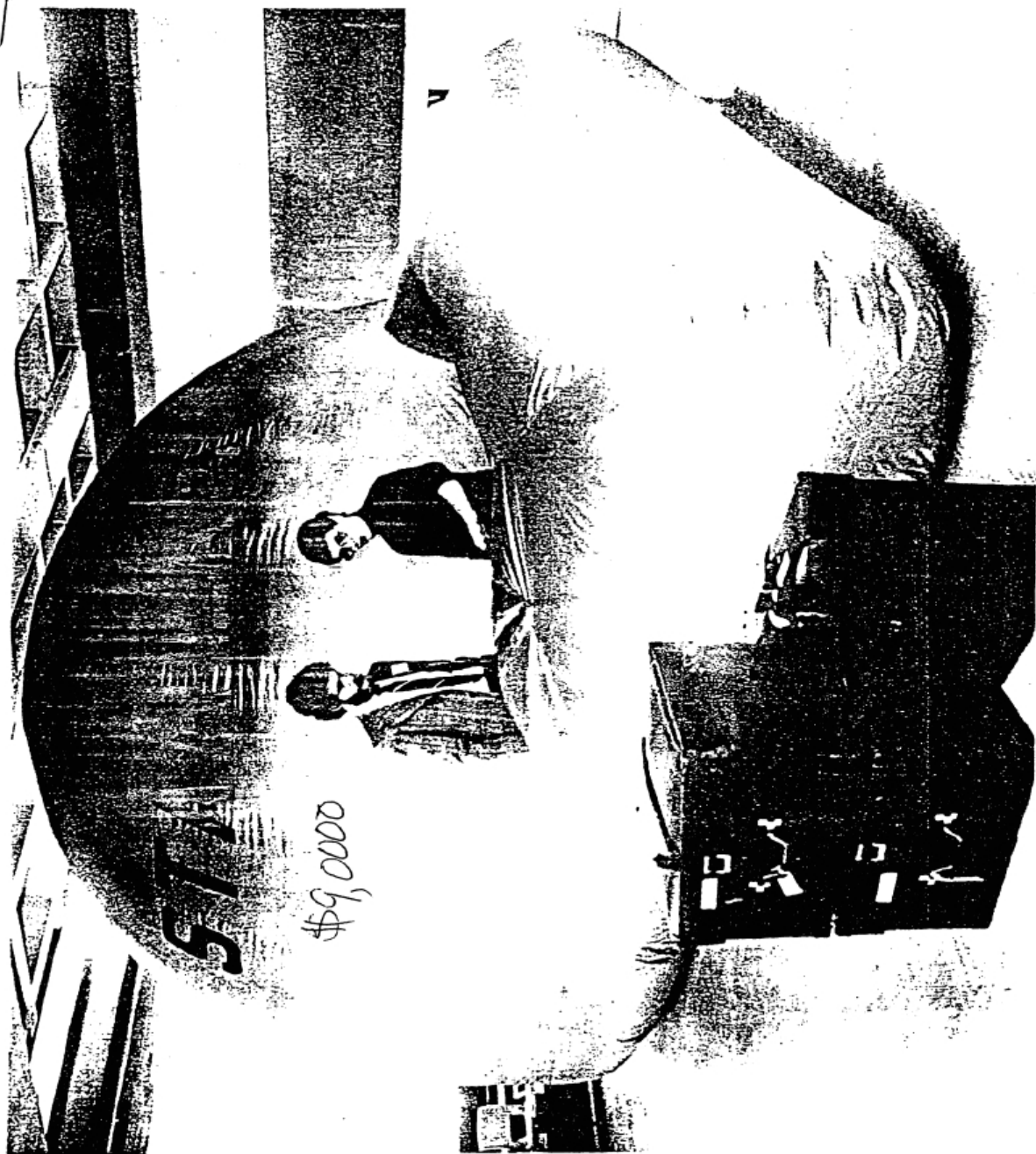
Develop list of personnel needs.

Need someone to develop some math projects which are
creative and appropriate to age levels targeted.

Select Project Director(s)

Develop project time-line

Suzanne Ramos
May 20, 1985



\$9,000

4/27/85

Attachment

PROJECT PROPOSAL

Polynesian Voyaging Society
Education Committee
Fred Cachola, Chairman

Dear Mr. Cachola,

I have discussed this proposal with various board members over the past six months and have gotten positive feedback from them. Since this is an educational project I feel it's appropriate that I outline it for the Education Committee's consideration.

Last year from March through July I traveled with the Hokule'a film to all the destinations now proposed for the "Voyage of Rediscovery". I met with educators in all those countries and surveyed educational materials that were available. I concluded that an up-to-date geography/social studies resource text for elementary/intermediate school aged children was much needed.

I am now proposing to develop such a resource text that would provide information regarding language, customs, geography, history, legends and economics. The uniting theme of the text would be the voyage of the Hokule'a and its effect on the people it touches. Like the Hokule'a it would contrast the ancient with the modern. In each island group, Hokule'a and the indigenous culture would be viewed through the eyes of persons young and old. It would be high interest for young people and easy reading.

I very much want to develop such a project. I am prepared to give as much time over the next 2½ years as is necessary to see its completion.

The budget for this project is approximately \$27,000.

I am asking the PVS to adopt this project as part of its educational goals and contribute \$2,000 toward its cost. If PVS will contract with me to complete the project it would also be my responsibility to raise the balance of funds necessary for its completion. All royalties or income from its publication would go toward the support of early education of Polynesian children.

The editor for this project is Sheree Lipton. Her statement is included.

Respectfully Submitted
Charles E. Larson

BUDGET

Air Fares	5,300
Per Diem (200 days x \$50)	10,000
Photo Equipment and Supplies	1,700
Editing Fee (Sheree Lipton)	5,000
Production Expenses	<u>5,000</u>
	27,000

P.V.S. - Educ. Comm.

5/31/85

For your info. - send

LIBRARY SERVICES AND CONSTRUCTION ACT (LSCA)
FACT SHEET AND SUMMARY

*suggestions to GAIC
FUTIMOTO as soon as possible.
PH. 8428613
JR.*

✓ What is the Program?

In 1984 Congress passed a LSCA Amendment which established special funding (\$590,000) to improve library program and information services for Native Hawaiians.

How Can the Funds Be Used?

USE OF FUNDS:

1. Inservice or preservice training of Hawaiians as library personnel
2. Purchase of library materials
3. Conduct of special library programs for Hawaiians
4. Salaries of library personnel
5. Construction, purchase, renovation, or remodeling of library buildings
6. Transportation to enable Hawaiians to have access to library services
7. Dissemination of information about library services
8. Assessment of library needs for Hawaiians

How Will The Funds Be Received?

In accordance with the provisions of the law, the Governor of Hawaii has designated a single agency, ALU LIKE INC., as eligible recipient of program funds. ALU LIKE INC., as administrator of this program will be responsible for the major management functions, including liason with the U.S. Dept. of Education, program planning, monitoring and fiscal control.

How Will Program Decisions Be Made?

A draft of possible program goals and objectives has been developed with input from library patrons, librarians, teachers, researchers, and administrators. This plan was presented to Governor's Special Advisory Panel and will be presented in community forums across the state. The comments and suggestions from the Panel and the community will assist program planners in further developing and refining program plans, and establish priorities and the level of funding for specific activities.

When will the Program Start?

The grant application instructions and forms will be mailed out in June from Washington D.C.. The grant proposal is due back in Washington July 15, 1985. Anticipated funding should begin Oct. 1, 1985.

What is the Role of Native Hawaiian Agencies?

The agencies have offered guidance and input in the development of the draft proposal. They have further coordinated their efforts in developing community awareness, laying the ground work for the program and organizing the community forums.

What are the Elements of the Draft Plan

I. Introduction

This is a brief statement about the elements of the Draft Plan.

II. Background

This section reviews the authorization of the Library Services and Construction Act for Native Hawaiians, and the background behind the selection of Alu Like Inc. as eligible recipient. Also included is a brief description of the four major Hawaiian Agencies involved in the interagency planning effort. This section concludes with a brief history and background of the islands and a profile of the Native Hawaiians today.

III. Description of Existing Library Programs in Hawaii

This section describes public and public school library programs in the state.

IV. Assessment of Library Needs of Native Hawaiians.

This section describes Library Needs of Native Hawaiians in terms of five categories:

1. Library usage
2. Access Library Services
3. Lack of Culturally-Based Library Resources available for youth
4. Lack of adequate Needs Assessment Data
5. Underrepresentation of Hawaiians in Library Professional Occupations.

Native Hawaiian Educational Assessment Project
(NHEAP) - Implications for Library Programs.

This section describes some of the NHEAP findings and recommendations which planners have been cognizant of in developing the draft proposal.

V. Program Plan

This section includes the mission statement which was adapted by the Governor's Special Advisory Panel and the proposed possible goals and objectives and the LSCA target areas. The attachment following this summary will provide a detailed list of all the goals and objectives and further provide an opportunity for community reaction to each objective.

VI. Management Plan

This section details the overall Management functions and the program operations as outlined by Alu Like Inc.

VII. Planning Process

This section describes the planning process and the community involvement which is a vital component in program planning.

Polynesian Voyaging Society
Education Committee

6/27/85
Attachment #3

A PROPOSED COURSE IN PACIFIC STUDIES

Content Areas:

- *I Geography and Ecology
 - A. Island Types
 - B. Climate
 - C. Resources
 - D. Flora and Fauna
- *II Peopling of the Pacific
 - A. Migratory routes
 - language traces
 - B. Navigation
 - C. Physical characteristics
 - D. Family life
 - E. Livelihood
 - F. Material culture
 - 1. arts, crafts, tools
 - G. Religion
 - H. Music, dance, poetry
 - I. Folklore, legends
- III. Post contact
 - A. Discovery and Exploration
 - B. Whalers
 - C. Beachcombers
 - D. Missionaries
 - E. Traders
 - F. Partitioning of the Pacific
- IV. Impact of WWI and WWII
- V. Regionalism and Independence
 - A. Self Government
 - B. Societal problems
 - 1. Population
 - 2. Health
 - 3. Education
 - 4. Welfare
 - 5. Pollution
 - C. Nuclear Concerns
 - D. Traditional vs. Contemporary life styles

Elementary

* A Unit for 6th grade study of Pacific Peoples

** A Unit for 9th grade World History Course-Study of Oceania

UNRECORDED

MINUTES

PVS Education Committee

Sub Committee on Design

CALL TO ORDER

meeting of the PVS Design Education Committee was called to order at 9:00 a.m. on June 20, 1985, in the Heritage Room of the Kamehameha School's Administration Building. Participants were:

Mahealani Pescaia

Cecilia Kapua Lindo

Robert Kiste

John Kofel

Libby Oshiyama

Karen Knudsen

BUSINESS AND DISCUSSION

Pacific Region Educational Program

Bob Kiste introduced John Kofel, former chancellor of the University of Hawai'i, Hilo Campus. John is presently the director of the Pacific Region Educational Program. The organization is one and a half years old and was established with the intent of developing a network of university on-site teams involved in directing their own educational needs in the Pacific areas. (Hawai'i, Federated States of Micronesia, American Samoa, Guam, etc.) The program is federally funded, and the members of these regional laboratories meet periodically to articulate their goals and needs.

John can help the PVS Education Committee by giving us input from these regional laboratories. He has also invited us to their regional meetings. The organization has available expertise, money and people to develop materials and can keep us in touch with what they are doing in education. Although we are interested in developing materials for grades 6, 9, and high school level, the content materials

24

they create can be modified to meet our own needs.

PALM (Pacific-Asian-Language-Materials) Development Center . could be tapped for materials and resources that were produced before they closed shop. It is managed by Carol Jenkins at the University. Karen Knudsen will contact her at 948-8930.

Modules

Bob Kiste suggested the development of modules that will include not just the Polynesian islands Hōkūle'a will visit, but also Micronesia and Melanesia.

The following modules were listed in the over-all categories:

1. Geography and Ecology (Formation of islands, island types, flora, fauna, resources, climate)
2. Peopling of the Pacific (Language, prehistory, navigation, migration)
3. Three cultural areas (Micronesia, Melanesia, Polynesia)
 - a. Traditional culture, family life, earning a living, material culture, religion, art, music, political organization, legends, folklore, race characteristics of the people, idea of Mana, case studies of islanders
4. European Peoples (Cook Bougainville, Bly, beachcombers, missionaries, whalers, traders, castaways, partitioning or colonization)
5. WWI and WWII (Vast impact on Pacific Islanders)
6. Decolonization (Pacific Islanders coming into their own rights, determining their own destiny, self-government)
7. Regionalism and Independence (South Pacific gains)
8. Current and future issues (Population, government, nuclear concerns, politics, high-tech, education, health, welfare, population, pollution)

Bob Kiste will be visiting the University of the South Pacific, the University of Fiji, and the University of Papua New Guinea. He will bring back information that should be of interest to the members of the PVS Education Committee.

He will support us in data and quality control as we pursue our objectives to develop materials about the Pacific regions. He feels that Hawai'i has a moral obligation to showcase the best in Hawaiian and Pacific Studies.

25

Use of Suggested Curriculum

The committee is considering developing an elective course for high school Social Studies credit in Pacific Island Studies. Additionally, selected modules of that course will be revised to create units of study to be provided for the inclusion in ninth grade World History Course, unit on Oceania; and the sixth grade Social Studies Course, unit on Pacific Peoples.

Cecelia, Libby and Mahealani will develop an outline based on Dr. Kiste's input and their ideas.

Close

We need Fred to call a total Education Committee meeting to present these ideas.

Next Design Sub committee meeting

Thursday, July 25, 1985, 9 to 11:00 a.m., Heritage Room,
Kamehameha Schools.

July 16, 1985

MEMORANDUM

TO: PVS Board of Directors

FROM: Fred Cachola, Chairman
Education Committee

SUBJECT: EDUCATION COMMITTEE REPORT AND ACTION PLANS
FOR 1985-86, 1986-87

BACKGROUND

For the past 9 months, the Committee has been meeting in various forms to promote existing educational materials/efforts and to plan for efforts for the next 2 years. The Committee is composed of 3 sub-committees---Design, Development, Delivery---and the members come from a wide range of occupations and institutions with a plethora of skills, experiences and contacts (See Attachment A). All come with commitment to the Hōkūle'a and a desire to educate.

The Polynesian Seafaring Heritage (via KS/BE) has been reprinted (1,000) along with Ray Lanterman's map/poster (via DOE). These materials along with a residual of children's books are being disseminated.

CURRENT

The Design Committee has developed plans for future development and is presenting them to the Board via this report.

The members of the Education Committee are concerned that there is no one person with adequate time to commit to bringing these plans to fruition. They feel that it is essential that coordination, decision-making, networking and some development responsibilities lie in the hands of an educator who is on staff with PVS. Minimally, this might be a half-time position. This individual would also prepare proposals, implement and monitor programs, and manage finances, i.e. the National Science Foundation grant, as well as be able to teach students, train teachers and deliver presentations to large groups.

FUTURE

The following is an Action Plan for the development of materials and activities. The plan is organized by primary funding sources PVS, federal, and other local. The local sources are developing

projects that are consistent with the goals and objectives of these institutions. There is a final page, "Other Possibilities," that has not been worked out yet. The estimated budget cost represents a minimal figure that has already been reduced due to organizational and individual promises to "help out." It is possible that the money that will meet some of the PVS budget needs might also be acquired through grants or other resources. The Committee is asking, however, that the Board commit to some or all of these recommendations and decide how the money shall be provided.

<u>SUMMARY OF ACTION PLANS</u>	<u>85-86</u>	<u>86-87</u>
. 7 activities proposed for funding by the PVS Education Committee	37,500	36,200
. 4 activities proposed for funding via federal sources	9,000+?	76,000+?
. 7 activities proposed by local sources	6,000+?	10,500+?
TOTAL:	52,500+?	122,700+?
. Other Possibilities and ideas not yet budgeted		

PVS EDUCATION COMMITTEE
PROPOSED ACTION PLANS - FY 1985-86, 1986-87

	WHO WILL COORDINATE	ASSISTANCE FROM	ESTIMATED BUDGET		DATES	CON'T 87-88
			85-86	86-87		
<u>PVS FUNDING</u>						
1. HIRE a) 50% FTE Educational Director (\$1300/mo)	PVS Board Educ Comm		11,700	15,600	10/85 - 6/87	*
b) 50% FTE Clerical support (\$500/mo)			4,500	6,000	10/85 - 6/87	*
c) Operating Budget (\$300/mo)	PVS Director of Educ	Need office equip and space donated	2,700	3,600	10/85 - 6/87	*
2. COORDINATE SPEAKERS BUREAU to provide slide presentations and talks (Airfare/Per Diem/Stipend)	PVS Director of Educ C. Woolaway	. Haw'n Maritime Center . Volunteers . Agency Donations	1,000	2,000	10/85 - 6/87	*
3. DEVELOPMENT OF SLIDE SHOW for Speakers' Bureau	PVS Director of Educ	KS/BE HSI DOE; PVS Volunteers	300	--	11/85 - 1/86	*
4. DEVELOP POLYNESIAN ISLANDS RESOURCE BOOK for middle grades students (See Attachment B)	Chuck Larsen	Other funding sources	2,000		8/85 - 6/87	
5. PACIFIC STUDIES CURRICULUM 1 unit for gr. 6; 1 unit for gr. 9; a course for 11 or 12 gr. (See Attachment C)	PVS Director of Educ and contracted persons	UH and DOE for editing, production & teacher training	8,000	8,000	10/85 - 6/87	
6. HÖKŪLE'A CURRICULUM & INSTRUCTION workshops for teachers	PVS Director of Educ	DOE	--	--	12/85 - 6/87	*
7. CONVERSION OF DOCUMENTATION of Hōkūle'a voyage into educational material	PVS Director of Educ and clerical support	Hōkūle'a Crew	300	1,000	10/85	*
<u>SUB-TOTAL: PVS FUNDING</u>			<u>37,500</u>	<u>36,200</u>		

PVS EDUCATION COMMITTEE
PROPOSED ACTION PLANS - FY 1985-86, 1986-87

PAGE 2

	WHO WILL COORDINATE	ASSISTANCE FROM	ESTIMATED 85-86	BUDGET 86-87	DATES	CON'T 87-88
<u>FEDERAL FUNDING</u>						
1. STAR LAB FOR WAYFINDING ART (See Attachment D)	Bishop Museum PVS Director of Educ KS/BE	National Science Museum	--	75,000	6/86 - 5/89	*
2. TRAVELING DISPLAY of the Voyage of Rediscovery for libraries	Marsha Bolson & PVS Director of Educ	Federal library funds KS/BE	5,000	1,000	1/86 - 6/87	*
3. ARTHMOBILE EXHIBIT of Polynesian Culture (See Attachemnt E)	Rowena Keaka DOE	Federal library funds or contract from DOE to PVS	4,000	--	1/86 - 6/87	
4. WAYFINDING ART EXHIBIT currently in San Francisco	Lawrence Hall of Science	National Endowment for Culture and the Arts	?	?	10/85 - 6/87	
<u>SUB-TOTAL: FEDERAL FUNDING</u>			<u>9,000+?</u>	<u>76,000+?</u>		
<u>OTHER LOCAL SOURCES</u>						
1. DEVELOP INSTRUCTIONAL UNIT utilizing the existing Hōkūle'a instructional materials for upper elementary and intermediate students. Focus on problem-solving and literature.	Bev Rodrigues Libby Oshiyama KS/BE Alternative Education		1,000	--	6/85 - 10/85	
2. DEVELOP HOKULA'A VOYAGE STORY BOOK High interest, upper elementary readability for elem/inter students	Julie Williams KS/BE Na Pua A Pauahi	PVS	--	2,500	6/86 - 6/87	
3. DEVELOP PACIFIC GEOGRAPHY GAME	Mahela Rosehill KS/BE HSI	PVS	--	5,000	9/86 - 6/87	
4. CONDUCT TEACHER TRAINING for Hōkūle'a curriculum	DOE	PVS	5,000?	--	12/85 - 6/86	

PVS EDUCATION COMMITTEE
PROPOSED ACTION PLANS - FY 1985-86, 1986-87

	WHO WILL COORDINATE	ASSISTANCE FROM	ESTIMATED 85-86	BUDGET 86-87	DATES	CON'T 87-88
<u>OTHER LOCAL SOURCES (Cont'd)</u>						
5. DEVELOP COMPUTER GAME on Hōkūle'a Voyage for problem solving	Francis Ching KS/BE HSI	PVS	--	3,000	9/86 - 6/87	
6. DOCKSIDE FLOATING CLASSROOM for State of Hawaii--Travels to many ports in the State to provide experiential instruction	KS/BE HSI and PVS Director of Educ	PVS	--	--	1/88 - 2/89	* ?
7. PROVIDE RESEARCH DATA AND RESOURCES on Pacific Islands	Center for Pacific Studies UH	PVS	?	?	10/85 - 6/87	
<u>SUB-TOTAL: OTHER LOCAL FUNDING</u>			<u>6,000</u>	<u>10,500</u>		
<u>GRAND TOTAL: PVS, FEDERAL, OTHER LOCAL AGENCIES</u>			<u>52,500+?</u>	<u>122,700+?</u>		

OTHER POSSIBILITIES

1. COLLABORATE with Hawaii ETV and Dr. Richard Ruopp, president, Bank Street College of Education to produce a TV series with the Hōkūle'a and the "Voyage of the Mimi" within the state of Hawaii
2. SPONSOR an international conference on non-instrumental navigation.
3. THE FLOATING CLASSROOM, Hōkūle'a, sails to select ports on the West Coast and conducts dockside classes, tours and/or short sails when appropriate. Possibly co-sponsored with Lawrence Hall of Science (San Francisco) or Hawaiian civic clubs at San Francisco (1), Los Angeles (2) and San Diego (1)

POLYNESIAN VOYAGING SOCIETY
EDUCATION COMMITTEE

ATTACHMENT A

		Design	Develop- ment	Deliv- ery	Core	Other
Marsha Bolson	KS/BE Office of Public Affairs		X			
Fred Cachola	KS/BE Director, Extension Education				Ch	
Francis Ching	KS/BE Resource Spec, Hawn Studies Inst		X			
Tai Crouch	Punahou Teacher, Hawn Studies	X				
Rowena Keaka	DOE Artmobile/Related Arts Retired Art Educ Spec II			X		
Charles Larson	Sea Gull Schools Executive Director		Ch			
Cecilia Lindo	Hongwanji Mission School Teacher/VP	Ch				
Colleen Murakami	DOE Coordinator, Marine/Aqua Educ (EI)	X				
Libby Oshiyama	KS/BE Curr Specialist, Extension Educ	X		X	X	
Mahealani Pescaia	DOE Curr Developer, Hawn Studies	Co-Ch				
Gordon Piihanaia	KS/BE Director, Hawn Studies Inst		X		X	
Robert Snakenberg	DOE Educ Specialist II, Hawn Studies			Ch		
Chris Woolaway	Hawaii Maritime Center Education Coordinator			X		
Dr. Bob Kiste	UH - Director Pacific Island Studies, Director	X				
Karen Knudsen	UH - Outreach Coordinator Pacific Island Studies	X				
Gail Fujimoto	KS/BE Librarian			X		

PROJECT PROPOSAL

Polynesian Voyaging Society
Education Committee
Fred Cachola, Chairman

Dear Mr. Cachola,

I have discussed this proposal with various board members over the past six months and have gotten positive feedback from them. Since this is an educational project I feel it's appropriate that I outline it for the Education Committee's consideration.

Last year from March through July I traveled with the Hokule'a film to all the destinations now proposed for the "Voyage of Rediscovery". I met with educators in all those countries and surveyed educational materials that were available. I concluded that an up-to-date geography/social studies resource text for elementary/intermediate school aged children was much needed.

I am now proposing to develop such a resource text that would provide information regarding language, customs, geography, history, legends and economics. The uniting theme of the text would be the voyage of the Hokule'a and its effect on the people it touches. Like the Hokule'a it would contrast the ancient with the modern. In each island group, Hokule'a and the indigenous culture would be viewed through the eyes of persons young and old. It would be high interest for young people and easy reading.

I very much want to develop such a project. I am prepared to give as much time over the next 2½ years as is necessary to see its completion.

The budget for this project is approximately \$27,000.

I am asking the PVS to adopt this project as part of its educational goals and contribute \$2,000 toward its cost. If PVS will contract with me to complete the project it would also be my responsibility to raise the balance of funds necessary for its completion. All royalties or income from its publication would go toward the support of early education of Polynesian children.

The editor for this project is Sheree Lipton. Her statement is included.

Respectfully Submitted
Charles E. Larson

D R A F T

MEMORANDUM

TO: Fred Cachola
PVS Education Committee

FROM: Libby Oshiyama

SUBJECT: CHUCK LARSEN'S BOOK

Per your request, I've gathered the following information regarding Chuck's plans and intentions. I've told him that we will write a contract for him to sign as soon as possible.

INFORMATION

- . Target group - up elementary & intermediate school students of Hawaii, Pacific, Mainland
- . Type/Content Resource Book
All countries with Polynesian people, including ports
Hokule'a doesn't go to.
- . Cost - \$8-10
Color photos, soft cover
- . Royalties - Doesn't know - But not asking for any for self; up to PVS Board of Directors, i.e. trust for early education of Polynesian children, give to Hawaiian Trust for application even outside of Hawaii
- . Total Acknowledgement to PVS. One of PVS' projects to present to Legislature
- . Wants \$2,000 - that's it.
- . Sherry Lipton will do layout, etc., (not just editing)

DRAFT

AGREEMENT FOR SERVICES
Between POLYNESIAN VOYAGING SOCIETY
and CHUCK LARSEN

Dates of Agreement for Completion: July 3, 1984 to July 1, 1986

Service/Product: A resource book on the Islands of Polynesia

Description of Service/Product: The book will be an information resource on the island countries of Polynesia. It will be at the readability level of upper elementary/intermediate students and is intended to be a tool for instruction on the People of the Pacific. It will utilize the voyage of the Hōkūle'a double-hulled canoe as a vehicle for presentation. It will contain many (20+) photographs of Polynesian islands and people.

Financial Considerations

- . Polynesian Voyaging Society will give Chuck Larsen \$2,000.00 on or before August 1, 1985.
- . Other needed funds will be raised by Chuck Larsen using the Polynesian Voyaging Society as the applicant and Chuck Larsen as the contractor.
- . All royalties and proceeds from the book will go to the Early Education of Polynesian Children. The vehicle for management and dispersal of these funds will be decided by the Board of the Polynesian Voyaging Society.

Other Considerations

- . Chuck Larsen and other persons he designates will be listed as the authors.
- . Polynesian Voyaging Society will be acknowledged as the promoters and owners of the book.

for
The Polynesian Voyaging Society

Chuck Larsen

(revised and approved by Chuck Larsen)

NATIONAL SCIENCE FOUNDATION GRANT

BACKGROUND

The Lawrence Hall of Science (University of California, Berkeley) and the Bishop Museum received a grant from the National Endowment for the Humanities in the amount of \$185,000 to create an exhibition and participatory planetarium program on THE WAYFINDING ART: OCEAN VOYAGING IN POLYNESIA. This is a cost sharing program; the total cost of the project is more than the NEH award.

The Holt Planetarium at the Lawrence Hall of Science is a leader in developing participatory programs, and has received national recognition for its innovative contributions. In contrast to typical passive museum exhibits, at which visitors spend an average of 45 seconds, research conducted at Lawrence has shown that involving visitors actively increases "engaged time" to ten or fifteen minutes and leads to significant learning.

Members of the Polynesian Voyaging Society are serving as consultants to the project, and the exhibits and program will include the voyages of the HOKULE'A.

Prototype models of the exhibit will be built in Berkeley and tested at both the Lawrence Hall of Science and the Bishop Museum beginning in Sept. of 1986. Refinement will take place on the basis of the results. By mid-1986, the exhibit will be available to other museums throughout the country. During the next five years 3.5 million visitors are expected to become involved in THE WAYFINDING ART.

As a result of a planning meeting with Lawrence Hall of Science and the Bishop, an idea for a traveling program for school children in Hawaii developed.

PROGRAM CONCEPT

This is a brief description of an educational program that would bring the story of the HOKULE'A to students throughout the state in ways that might be more effective than books and films, and which would more fully utilize the educational materials already produced by PVS, and perhaps form the impetus for creating new materials. This project could be an outreach program which brings together science education and cultural enrichment.

The need for such a program can be demonstrated in several ways. First of all, there is a national movement for science education; the National Science Foundation is particularly interested in projects that focus on the lower grades "because those are the years where the attitudes of preadolescents begin to develop." NSF is also interested in engaging students in "hands-on" science

and mathematics experiments. Second, all seven Hawaii Dept. of Education School Districts reported there is a gap in the area of library resources in Hawaiian Studies suitable for use by younger students from kindergarten through grade 8. This is a gap area not only for Hawaiians but for all of Hawaii's children. The per pupil book ratio is considerably below average in schools identified as having a high percentage of Native Hawaiians.

This project would feature a traveling planetarium (an inflatable dome and planetarium projector) which seats 30 students. The planetarium show will have to be developed. It could be a version of Will Kyselka's Polynesian Skies (Bishop Museum) with participatory activities included.

Before the planetarium arrives at a school, a teacher education program could be held. The program would provide teachers with activities to prepare their students to more fully appreciate information provided in the planetarium program. Some very good activities have already been developed and published in the book "Polynesian Seafaring Heritage." The program could provide each participating teacher with a copy of this book and a hands-on workshop in how to do the activities. The best workshop is one which gets teachers to do the activities before teaching them.

Other activities could supplement the program. Students could make their own planetariums by punching holes in the bottom of a paper cup to represent Maui's Fishhook, and then holding a flashlight over it in a darkened room. Simple math activities could be devised which feature the distance the Hokule'a travels to a destination, for example.

DETAILS

Grant application due dates: August 15 and December 15
Comment: have everything ready by June 28

Starlab: (traveling planetarium)
information is on the way from ---
Learning Technologies Inc.
estimate: \$6,000 or \$7,000 per unit

NEEDS

Participating agencies: Bishop Museum
Polynesian Voyaging Society
The Kamehameha Schools
Suggest we use DOE as consultants

a letter of support from Hatanaka.

Polynesian Voyaging Society

Education Committee

A PROPOSED COURSE IN PACIFIC STUDIES

Content Areas:

- *I Geography and Ecology
 - A. Island Types
 - B. Climate
 - C. Resources
 - D. Flora and Fauna
- *II Peopling of the Pacific
 - A. Migratory routes
 - language traces
 - B. Navigation
 - C. Physical characteristics
 - D. Family life
 - E. Livelihood
 - F. Material culture
 - 1. arts, crafts, tools
 - G. Religion
 - H. Music, dance, poetry
 - I. Folklore, legends
- III. Post contact
 - A. Discovery and Exploration
 - B. Whalers
 - C. Beachcombers
 - D. Missionaries
 - E. Traders
- F. Partitioning of the Pacific
- IV. Impact of WWI and WWII
- V. Regionalism and Independence
 - A. Self Government
 - B. Societal problems
 - 1. Population
 - 2. Health
 - 3. Education
 - 4. Welfare
 - 5. Pollution
 - C. Nuclear Concerns
 - D. Traditional vs. Contemporary life styles

Elementary

* A Unit for 6th grade study of Pacific Peoples

** A Unit for 9th grade World History Course-Study of Oceania

ILLEGIBLE

II. PROPOSAL FOR D. O. E. ARTMOBILE EXHIBIT

A. Design, install dismantle an exhibit on Polynesian Voyaging. March - June - 4 months on Oahu.

1. models ~~of~~ canoes
2. Enlarged 24 X 36 paintings and pictures
3. Articles taken on the journey, objects etc.
4. Actual hale on pola in artmobile
5. Plants

B. Develop a brochure for classroom use - done primarily by Rowena Keaka, use her funds.

1. Contains information and suggested activities for use use in the classroom
2. Ask National Geographic Society for reprints of Polynesia map showing different kinds of canoes and Polynesia,
3. Human aspects involved on the trip.

C. Slide - tape presentation

This would be approximately 3 - 4 minutes in length. Slides would be taken from the P. V. S. slides. The presentation would be used for motivation, enrichment, follow-up or orientation. Rowena Keaka will do this.

Mikilani Ching, interior designer, has offered to design the exhibit for the nominal fee of \$120.00. (This is to satisfy her employer, J. Richards Interiors.) Committee approved this for Board action.

Manpower for project: Gordon Piianaia to edit
Rowena Keaka, write the script

Target group: Grades 4 - 6th, rural areas on Oahu

Cost: \$2500.00

Contract: P. V. S., Pres. Ben Young, official signer.

ILLEGIBLE

MINUTES
POLYNESIAN VOYAGING SOCIETY
EDUCATION COMMITTEE

Call To Order

A meeting of the PVS Education Committee was called to order at 3:15 p.m. on Tuesday, May 28 by Chairman Fred Cachola in the Heritage Room of the Kamehameha Schools Administration Building.

Participants Were

Fred Cachola, director, Extension Education Division, The Kamehameha Schools
Gordon Piiianaia, director, Hawaiian Studies Institute, The Kamehameha Schools
Nuulani Atkins, resource specialist, Hawaiian Studies Institute. KS/BE
Bob Worthington, director, Financial Aid program, The Kamehameha Schools
Kapua Lindo, Hongwanji School
Mahealani Pescaia, curriculum developer, DOE Hawaiian Studies
Gail Fujimoto, librarian, Midkiff Learning Center
Karen Knudsen, research coordinator, University of Hawaii
Robert Kiste, director, Pacific Island Studies, University of Hawaii
Suzanne Ramos, grants writer, The Kamehameha Schools
Libby Oshiyama, curriculum specialist, The Kamehameha Schools
Chris Woolaway

Excused

Tai Crouch, Punahou School
Rowena Keaka, education specialist, DOE (Retired)
Lokomaikai Snakenberg, education specialist, DOE
Coleen Murakami, resource specialist, DOE
Chuck Larsen, director, Seagull School
Francis Ching, resource specialist, The Kamehameha Schools
Tom Coffman

Discussion and Business

1. Results of the Grant-in-Aid Request to the Legislature for \$100,000.

- . The 85-86 Legislature awarded a total of \$400,000 to the PVS--\$200,000 a year for the next 2 years for developing and promoting educational programs.
- . The challenge now is how shall it best be spent. Mr. Thompson and the Board are working on that.

2. Results of the Sale of Educational Materials from the March 17 Ka Lā Hanohano and Other Distribution.

- . (Sale): To date - 42 Polynesian Seafaring Heritage
- 106 Children's Books
- . (Distribution): Gordon, Bob and Mr. Thompson distributed 54 copies of Polynesian Seafaring Heritage and other books on their recent Pacific Islands trip. The materials were received with great enthusiasm. They also distributed 20 sets of the PVS Children's Books.

3. Development of a Proposal to the National Science Foundation (NSF)
for a Traveling Planetarium Program. (See attached preliminary description)

- We are planning to submit this proposal with the cooperation and consultation of Bishop Museum and Kamehameha Schools and the DOE.
- The core of the program will include traveling star labs-inflatable planetariums that seat 30 children at a time.
- Integrated curriculum areas may include astronomy, geometry, mythology, and anthropology.
- The proposal would include teacher training, student preparation and follow-up activities.
- Fred called Miles Muraoka, science curriculum specialist at the DOE, to collaborate with the preparation of the proposal. Miles has agreed to kokua.
- Suzanne Ramos will head an AdHoc Committee to plan what the proposal shall contain. That Committee could be composed of Will Kyselka and Walt Steiger of Bishop Museum, Mahealani Pescaia, Miles Muraoka, Libby Oshiyama and others. Libby has agreed to assist in the writing of the proposal.
- The proposal deadline is August 15, then there will be a 6-9 month waiting period to see if we've been funded.
- The Committee agrees that preliminary curriculum planning and development should occur during the 6 to 9 month waiting period.

4. Native Hawaiian Library Service and Construction Act (See Attached Factsheet).

- Gail Fujimoto, KS/BE librarian, provided a briefing on this project and is writing the proposal.
- What is the Program? In 1984, Congress passed a LSCA Amendment which established special funding (\$590,000) to improve library program and information services for native Hawaiians.
- Gail is looking for input from concerned persons - statewide - as to what should be in the proposal which is due June 30.
- PVS Education Committee can certainly network with this resource for both the development of materials and the dissemination of educational resources.

PVS Education Committee Minutes
May 28, 1985
Page 3

5. Trip Report of South Pacific Advance Delegation (See Attached Report).

- Myron Thompson, Bob Worthington, Gordon Piianaia and Chris Conybeare were members of that delegation.
- Tahiti is very interested in cultural/educational materials development project.
- Cook Islands are also very interested in such a project.
- New Zealand - (a) Two noted authors and representatives of the Ministry of Foreign Affairs will be in Hawaii in June to meet with Bishop Museum, East-West Center and KS/BE to establish a Te Rangi Hiroa Fellowship for research and training relevant to Polynesian culture; (b) There are many Maori programs and materials that have been developed. It would behoove PVS to collaborate with New Zealand in the exchanging and sharing of materials on a broader scale.
- Other Conclusions
 - Hawaii's materials from PVS and Kamehameha's Hawaiian Studies Institute were received well and deemed outstanding by the Pacific countries.
 - There is a dearth of materials for Pacific Island study for younger than college-age students. It is highly recommended by all concerned educators in the Pacific that this condition be rectified.

6. Pacific-wide Networking toward the Development and Dissemination of Pacific Educational Materials and Training Programs.

- This concern is being coordinated by the PVS Design sub-committee of the Education Committee.
- The network has begun with Gordon, et.al., recent trip.
- The desire for a planning/coordinating conference among Pacific educators is great. The financial resources, however, have yet to be identified. One suggestion is that we in Hawaii travel to New Zealand to collaborate with Pacific educators.
- Dr. Kiste stated that research projects that include the acquisition of existing materials could start immediately, once the Committee identifies specific curriculum areas of focus. This research will require some \$ for researchers.
- The East-West Center hosted a workshop for teachers this past Easter regarding Pacific studies. There was high attendance and great interest shown. The #1 need is instructional materials.

PVS Education Committee Minutes
May 28, 1985
Page 4

7. PVS Director of Education and Curriculum Development Proposed.

- . The Education Committee believes that the ideas and opportunities that are emerging clearly fit the PVS goals and objectives. However there has been a heavy dependency on part-time volunteers to accomplish these goals.
- . There is growing need for a full-time director and, perhaps, staff to provide more deliberate and continuous coordination of the PVS' educational programs and pursuits.
- . The \$400,000 allotted from the Legislature could provide funds for a director and staff, at least for a two-year period.
- . Fred will discuss these needs with the PVS Board of Directors at their next meeting--possibly on June 6 or 13.

Mahalo to all those who came and shared their mana'o. Next "total" Committee meeting is at 3:30 p.m. on June 13 in the Kamehameha Schools Administration Building Heritage Room.

Meeting adjourned.

Respectfully submitted,

Fred Cachola

43

SALE

POLYNESIAN VOYAGING BOOKS

For All Ages

CHILDREN'S BOOKS

by Polynesian Voyaging Society

The Vision of Mo'ikeha
A Canoe for Uncle Kila
The Voyage To Tahiti } **\$1.50** each (retail \$2.50)

The above **3** books plus HÖKŪLE'A **\$6.00** (retail \$10.00)

The set of **4** books plus Resource Guide **\$7.50** (retail \$13.00)

POLYNESIAN SEAFARING HERITAGE

Reprint by Lindo & Mower **\$9.00** (retail \$12.50)

A Resource Book for all ages!

ONE DAY ONLY

Sunday, March 17th ALOHA TOWER

48

FEBRUARY 27, 1985

TO: CECILIA LINDO
FROM: MAR
SUBJ: PVS BOOKS

At a meeting with Fred Cachola, Marcia Bolson, and Lokomaikai, the following was decided:

(1) Kamahameha School Press has printed 1,000 copies of the Polynesian Seafaring Heritage and 1,000 copies of Ray Lanterman's map. They will allow the PVS to sell 500 copies of the books and maps at a cost to the public at \$12.50. (\$6.25 will go back to K.S. press) It was also emphasized that the map is not to be sold. It goes with the Seafaring Heritage book.

(2) The Children's Books (not including Teacher's Guide) are in total sets - 591. 500 will be given to PVS to sell at a cost of \$12.00 a set and individually at \$5.00. 91 copies of the set will be kept by K.S.

There are 410 complete sets (which includes the Teacher's Guide) which will be kept by Lokomaikai Snakenberg for the D.O.E. to be sold at their Teacher's conferences.

(3) On Friday, March 15, the Seafaring Heritage Book and the maps will be ready for pick-up at the K.S. Library with Lorna DeSilva. Please arrange to have someone pick-up and sign-out for those 500 books. By Friday, March 22, the remaining books must be returned with a check to K.S. PRESS. Remember, for each book sold (Polynesian Seafaring Heritage, \$6.25 must go to K.S.

(4) Arrangements have to be made to get the Children's Books and Heritage Book at the concert. Also what kind of graphics do you want? Attached is a copy of what Marsha wrote up for the Heritage book.

4a

DOCUMENTS CAPTURED AS RECEIVED

A social and economic profile of Hawaiians in management positions in the State of Hawai'i by John S. Homer with a historical introduction by George S. Kanahelo. Sponsored by the Hawaiian Businessmen's Association in July 1975, the study includes general observations of the group, including percent Hawaiian blood, age, education, and income; diagrams; and responses to specific questions.

Pages: 47 Size: 8-1/2 x 11 Price: \$.75

Hawaiian Reflections

A personal collection of candid, black and white photographs by renown photographer Rick Golt, taken throughout the Islands over a period of years. "They are but a few brief glimpses into the myriad worlds and peoples who form the Hawai'i," says Golt, who combined these photographic reflections with quotations to create a special interrelationship.

Pages: 104 Size: 6-1/2 x 9-1/2 Price: \$4.00

Polynesian Seafaring Heritage

This valuable reference book was produced in response to the renewed interest in Polynesian voyaging spurred by the epic voyage of the Hōkūle'a. Hōkūle'a's recreation of the 3,000-mile journey between Hawai'i and Tahiti showed that voyaging was not an isolated element of ancient Polynesian culture, but an embodiment of many cultural facets, including religion, genealogy, chant and dance, food preparation, canoe-building and sailing, navigation, seamanship, and exploration and settlement patterns. These subjects and others are introduced in this book.

Pages: 184 Size: 8-1/2 x 11 Price: ~~\$10.00~~ \$12.50

recommended
retail

A 17"x22" map of the Polynesian Triangle and probable migration routes taken by early Polynesians is included. ~~compliments of the Department of Education.~~

To Anne
111

50

HOKUBKS
September 21, 1984

PVS HOKULE'A BOOKS

The Vision of Mo'ikeha	=	1154
A Canoe for Uncle Kila	=	1267
Hokule'a	=	1001
Voyage to Tahiti	=	1435
A Resource Curriculum Guide to Polynesian Voyaging	=	410
Total Count of All PVS Hokule'a Books	=	5267

Complete Sets of All of the Above	=	410
Sets of the First Four Books Only	=	591
Total Sets (complete & 1st. 4 only)	=	1001

Loko
(500 PIS
91 K.S.)

Extra Copies:

The Vision of Mo'ikeha	=	153
A Canoe for Uncle Kila	=	266
Hokule'a	=	0
Voyage to Tahiti	=	434
A Resource Curriculum Guide to Polynesian Voyaging	=	0
Total Count of all EXTRA PVS Hokule'a Books	=	853

1,000 P.S.H. } 500 for March 17th
1,000 Maps }

For good and valuable consideration, receipt of which is hereby acknowledged, the undersigned ("Assignor") hereby sells, assigns and transfers to the POLYNESIAN VOYAGING SOCIETY (hereinafter "Assignee") the copyright in and to that certain map created by Assignor entitled "The Pacific Ocean Showing Presumed Routes of Migration Which Resulted in the Settlement of Polynesia", together with all the right, title and interest of the undersigned in and to the aforementioned work.

IN WITNESS WHEREOF Assignor has executed these presents
this 25th day of October, 1984.


RAYMOND E. LANTERMAN

STATE OF HAWAII)
) ss.
CITY AND COUNTY OF HONOLULU)

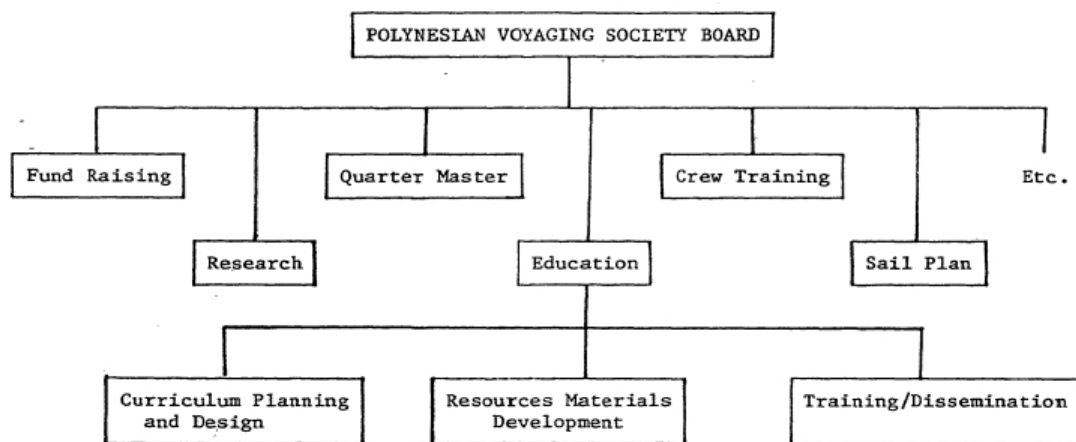
On this 25th day of October, 1984,
before me personally appeared RAYMOND E. LANTERMAN, to me known
to be the person described in and who executed the foregoing
instrument, and acknowledged that he executed the same as his
free act and deed.

Margaret S. Kojima
Notary Public, State of Hawaii

My commission expires: 3-29-85 50

POLYNESIAN VOYAGING SOCIETY
EDUCATION COMMITTEE
ORGANIZATIONAL CHART

ATTACHMENT II



RESOURCES DEVELOPED BY THE POLYNESIAN VOYAGING SOCIETY AND
KAMEHAMEHA SCHOOLS

BKS. ON HAND

- 50 Lindo, Cecilia Kapua, A Resource Curriculum Guide on Polynesian Voyaging, Hawai'i: First Ed., 1977 (rev.)
- 0 Lindo, Cecilia Kapua and Mower, Alpert Nancy, Polynesian Seafaring Heritage, Van Nuys, Calif., 1980
- 50 Mower, Alpert Nancy, The Vision of Mo'ikeha, Honolulu, 1977
- 50 Kapepa, Stanley, A Canoe for Uncle Kila, Honolulu, 1977
- 50 Mower, Alpert Nancy, The Voyage to Tahiti, Honolulu, 1977
- 50 Elackman, Maralyn, Hokule'a, Honolulu, 1977

THE HOKULE'A
AN INSTRUCTIONAL VEHICLE

Table of Contents

- Purpose & Schedule for August 16 "Experience"
- "An Instructional Vehicle"
A beginning list of the potential impact for
the total curriculum.
- Polynesian Deep Sea Chanty
- The Wa'a Kaulua (Double Hulled Canoe)
A drawing and labeled parts of the canoe
- Word Activity for Parts of Wa'a Kaulua
- History of Hōkūle'a With Comprehension Activities
- Creative Language Activities
by Cecilia Kapua Lindo
- Drying Hawaiian Foods
A brief description of food preparation for
voyaging.
- Resource Materials About the Hōkūle'a Compiled
by Tommy Holmes

HÖKŪLE'A EXPERIENCE

PURPOSE:

1. To reinforce "cooperative learning" strategies via the experience of sailing the Hōkūle'a and listening to the crew talk about their own efforts in this area.
2. To provide a hands-on/emotional connection with the Hōkūle'a for staff.
3. To establish a rapport between Alternative Education staff and crew.
4. To explore the potential uses of the Hōkūle'a as an instructional tool for the total curriculum via: discussion, an instructional package, a display of resource materials.
5. To lay the groundwork - interest wise for further events, experiences and educational use of the Hōkūle'a - a long range goal.

SCHEDULE:

6:15 a.m. Breakfast at Keopuolani Hale

6:45 Van depart for Hawaii Kai boat ramp.

7:30 Brief orientation and rigging of the canoe.

8:30 'Akāhi (novice) sail
Info session on shore for 'Īlio 'aukai (experienced sailor).

10:00 'Īlio 'aukai sail
Debrief and info session on shore for 'akāhi.

11:00 'Akāhi return to Keopuolani Hale.

1:00 "Īlio 'aukai return to shore and derig canoe.

1:45 'Īlio 'aukai and Hōkūle'a crew return to Keopuolani Hale.

2:30 Cookout at Keopuolani Hale.

3:00 Sharing between crew and staff.

4:30 Pua: He hopena pule 'olu'olu iā kākou!
(Let's have a nice weekend!)

* For those wanting ride to Hawaii Kai be at Keopuolani by 6:40 a.m.

THE HŌKŪLE'A

"An Instructional Vehicle"

The Hōkūle'a is a floating curriculum guide with high motivational value. It can be used as a means for teaching almost all facets of the Alternative Education curriculum.

<u>Math:</u>	Construction of the boat Navigation
<u>Language:</u>	Hawaiian Nautical Other Polynesian Languages
<u>Literature:</u>	Legends Stories Chants Poetry
<u>Social Studies:</u>	Hawaiian Studies of all kind History of the Pacific Modern Hawaiian History Geography Polynesian Voyaging - Past to Present Religion and Ceremonies
<u>Science:</u>	Marine Science Oceanography Celestial Navigation/Astronomy Horticulture - Hawaiian Plants
<u>Health:</u>	Nutrition Hygiene/Cleanliness 1st Aid/Emergency Preparedness Native Medicinal Herbs Food Preparation
<u>Guidance:</u>	Self Esteem, Identity Commitment Goal Setting and Planning Cooperation/Collaboration 'Ohana Conflict Resolution Problem-solving/Decision-making Accountability/Responsibility Discipline
<u>PE:</u>	Sailing Canoeing Physical Development
<u>Vocational Training:</u>	Fishing Agriculture Construction Maritime Industry
<u>Fine Arts:</u>	Music Art - Petroglyphs, Photography, Drawing Crafts - Weaving, lashing, basketry, kapa making Hula

POLYNESIAN VOYAGING SOCIETY

MINUTES

Education Committee
Wednesday, August 29, 1984

PRESENT: Fred Cachola, Cecilia Lindo, Charles Larson, Robert Snakenberg,
Gordon Piianaia, Francis Ching, Tom Coffman, Joyal Kihara, M. Among

The objective of the Education Committee meeting was to identify immediate, intermediate, and long range goals of the Committee as it relates to Hokule'a's "Voyage of Rediscovery".

The immediate goals of the Committee are to promote awareness, renew interest, and educate the general public, educational institutions, and interested groups in the upcoming voyage of Hokule'a. To achieve these goals, the Education Committee will work very closely with Tom Coffman to develop an educational/promotional exhibit. The exhibit will be utilized in the schools, shopping centers, and other sites. The cost will be approximately \$30,000.

The intermediate goals of the Committee are to develop an updated bibliography and to gain support of Polynesian groups like Hui Imi. The bibliography will include audio-visual materials, textbooks, maps, costs, and how these items are available. The Polynesian Voyaging Society has a wealth of instructional materials (Children's Books, Polynesian Seafaring Heritage, Teacher's Guide) which should be utilized instead of developing new materials.

Discussion centered on ideas for long-range planning like the development of a Hokule'a Art Mobile, in-service training for teachers on the Hokule'a's "Voyage of Rediscovery", and the production of maps to be distributed throughout the schools.

Joyal Kihara suggested to the Committee that she would like to organize an activity on-board the Hokule'a for the teachers at Kamehameha Schools. Gordon Piianaia will provide the Committee with a tentative schedule of Hokule'a's activities before her departure.

The Education Committee will meet again on Thursday, September 13, 3:30 P.M. at Kamehameha Schools.

POLYNESIAN VOYAGING SOCIETY

Education Committee

"VOYAGE OF REDISCOVERY"

Fred Cachola
Director of Extension Education
KAMEHAMEHA SCHOOLS
Kapalama Heights
Honolulu, Hawaii 96817
842-8211

Francis Ching
c/o Gordon Piianaia
KAMEHAMEHA SCHOOLS
Kapalama Heights
Honolulu, Hawaii 96817
842-8604

Joyal Kihara
KAMEHAMEHA SCHOOLS
Kapalama Heights
Honolulu, Hawaii 96817
842-8211

Charles Larson
Director
SEAGULL SCHOOLS INC.
1300 Kailua Road
Kailua, Hawaii 96734
261-8534

Residence: [REDACTED]
Waimanalo, Hawaii 96795
[REDACTED]

Cecilia Lindo
HONGWANJI MISSION SCHOOLS
1728 Pali Highway
Honolulu, Hawaii 96813
536-8678

Residence: [REDACTED]
Honolulu, Hawaii 96817
[REDACTED]

Page Two
Education Committee

Gordon Piianaia
KAMEHAMEHA SCHOOLS
Kapalama Heights
Honolulu, Hawaii 96817
842-8211

Residence: [REDACTED]
Kailua, Hawaii 96734
[REDACTED]

Robert Lokomaikai Snakenberg
Hawaiian Studies
189 Lunalilo Home Road (Second Floor)
Honolulu, Hawaii 96825
393-8782 (Business)
[REDACTED] (Residence)

Exhibit Consultant:

Tom Coffman
MULTI MEDIA INC.
220 South King Street, Suite 220
Honolulu, Hawaii 96813
531-3139
Residence: [REDACTED]
Kaneohe, Hawaii 96744
[REDACTED]

Media Documentation Consultants:

Chris Conybeare
Producer
HAWAII PUBLIC TELEVISION
2350 Dole Street
Honolulu, Hawaii 96822
955-7878
Residence: [REDACTED]
Honolulu, Hawaii 96816
[REDACTED]

Joy Chong
Director
HAWAII PUBLIC TELEVISION
2350 Dole Street
Honolulu, Hawaii 96822
955-7878