

*Blessing and Launching of Hawai'i Loa
Pier 36, Honolulu Harbor
July 24, 1993*

We ask that participants give their full attention to today's ceremonies. Silence is required while the rituals are being conducted and the prayers are being said.

Kani ka Pū: Sam Ka'ai

The first sounding of the pū signifies the beginning of the ceremony. The pū will sound again at the end of the 'ai kapu ritual and a third time at the lowering of the canoe into the water, signaling the end of the period of silence.

Opening: Parley Kanakaole

As the mea 'ōlelo (master of ceremonies), Parley Kanakaole calls the audience's attention to the ceremonies about to begin. He also explains the significance of each of the ceremonial rituals.

'Ai Kapu Ritual:

*Kahu 'Ai Kapu Bert Kaihe Barber, Kahuna Pule Kalena Silva and
Ha'i'ōlelo Keone Nunes*

The 'ai kapu ritual is the offering up of sacred foods to the canoe deities, foremost of which is Kū. This is done so that the gods will imbue the foods with their mana (spiritual power). As Kahu 'Ai Kapu, Bert Kaihe Barber is the guardian who prepares the sacred foods and enjoys a special relationship with the gods. Ha'i'ōlelo Keone Nunes serves as his spokesman and assistant.

The foods are kumu, ulu and hiwa coconuts, traditionally used in ceremonies. Kahuna Pule (master of prayer) Kalena Silva accepts these sacred foods and offers them to those seated in the kapu area. These individuals have been involved in the creation of *Hawai'i Loa* and have been identified by Kahuna Kālai Wa'a (master canoe builder) Wright Bowman, Jr., as instrumental in the canoe's creation.

After the 'ai kapu ritual, the remnants of the food, which contain the mana of the gods, are placed in niu baskets and protected until taken out to sea.

Blessing of Hawai'i Loa and Lifting of the Kapu:
Kahuna Pule Kalena Silva

Kahuna Pule Kalena Silva will bless *Hawai'i Loa* and lift the kapu placed on the canoe since the idea of its creation. *Hawai'i Loa* is now ready to be launched.

Launching of Hawai'i Loa

Hawai'i Loa is lowered into the water. Sam Ka'ai sounds the pū, inviting the audience to lift their voices in joyful praise of *Hawai'i Loa's* birth.

Mele Inoa for Hawai'i Loa:
Haku Mele/Mea Oli Keli'i Tau'a

Haku Mele/Mea Oli (composer/chanter) for Kahuna Kālāi Wa'a Wright Bowman, Jr., Keli'i Tau'a has composed a special chant which tells of *Hawai'i Loa's* genealogy, including the birth of the idea to construct the vessel; the unsuccessful search for logs in the koa forests of Hawai'i and the gifting of spruce logs by the Haida and Tlingit people of Alaska; the naming of the logs; the naming of the canoe after *Hawai'iloa*, the man, the first voyager to Hawai'i; the carrying on of the voyaging tradition of *Hawai'iloa* by Nainoa Thompson and his navigators and crews; the building of the canoe by Kahuna Kālāi Wa'a Wright Bowman, Jr., and his apprentices and workers. Keli'i Tau'a is assisted by Charles Kaupu.

As the mele inoa is recited, the canoe is dressed: the rigging and hoisting of the sails are completed. Lei of maile and 'ie'ie are used for adornment. Once *Hawai'i Loa* is ready, the canoe builders board the canoe and dip their paddles into the water for the symbolic first voyage of *Hawai'i Loa*. They chant "Ia Wa'a Nui," which was discovered in the Bishop Museum's archives by Kenneth P. Emory and translated by Mary Kawena Pukui. "Ia Wa'a Nui" has been used since the launching of *Hōkūle'a* at Kualoa in 1975 and for subsequent canoe launching and arrival ceremonies since that time.

"Ia Wa'a Nui"

| | |
|-------------------|--------------------------|
| Ia wa'a nui | That large canoe |
| Ia wa'a kioloa | That long canoe |
| Ia wa'a peleleu | That broad canoe |
| A lele māmala | Let chips fly |
| A manu o uka | The bird of the upland |
| A manu o kai | The bird of the lowland |
| 'Iiwi pōlena | The 'i'iwi pōlena bird |
| A kau ka hōkū | The stars appear |
| A kau i ka malama | The daylight arrives |
| A pae i kula | Land on shore |
| 'Āmama ua noa | 'Āmama, the kapu is free |

The crew members continue to chant as they disembark and again take their places in the ceremonial area. The chanting ceases.

Transfer of Hawai'i Loa
from Kahuna Kālāi Wa'a Wright Bowman, Jr.
to the Owner, the Native Hawaiian Culture and Arts Program
represented by Chairman, Clayton Hee

At the end of chanting "Ia Wa'a Nui", Keli'i Tau'a asks the representative of the canoe's owner, Clayton Hee if he finds the canoe maika'i — acceptable and good. Clayton answers in the affirmative and the ceremony ends with the sounding of the pū.

Recognition of Haida and Tlingit Tribes

At this time we honor our family from Alaska represented by Judson Brown and Byron Mallot, and acknowledge their generous donation of the logs from which Hawai'i Loa's hulls have been fashioned. Please feel free to show your aloha and appreciation by offering your ho'okupu (gifts).

Ho'okupu from Dignitaries

Dignitaries offer their ho'okupu to Hawai'i Loa.

Blessing by Kahu Kalili

Kahu Kalili offers his blessing.

Ho'okupu from Audience

The audience offers ho'okupu to Hawai'i Loa and honorees.

Celebration

Food and Impromptu Music and Dance

Hawai'i loa, the Man

The name "Hawai'i Loa" refers to a tradition found in the writings of Samuel M. Kamakau and Kepelino Keauokalani which state that the Hawaiian Islands were discovered by a chief named Hawai'i loa while he was on a long fishing expedition. He returned home and came back to Hawai'i with his wife and followers, including eight navigators. Because only Hawai'i loa brought his wife with him, all Hawaiians are said to be descended from him. The island of Hawai'i was named for him, while Maui, O'ahu, and Kaua'i were named after his children. The tradition also indicates that his brothers discovered and peopled islands to the south, including the Marquesas and Society Islands.

Although some scholars have questioned this tradition because it is part of a larger traditional genealogy called Kumuhonua which shares conspicuously similar characters and situations with biblical stories, the Hawai'i loa portion bears no resemblance to any biblical account. The names, places and basic settings give us no reason to question their age and authenticity. Further, Patience Bacon of the Bishop Museum remembers kupuna being interviewed by Tutu Puku'i. These kupuna spoke of Hawai'i loa as their "reality"; this was sometime in the 1920's and 30's. Mrs. Bacon feels that the tradition is sound.

Hawai'i Loa, the Canoe

Hawai'i Loa, the canoe, has been built to help recover the canoe building tradition in Hawai'i and to recreate early settlement voyages believed to have come from the Marquesas Islands. Scholars believe the first voyages of settlement to Hawai'i over 1600 years ago came from those islands because the languages of the two island groups are similar as are their ancient adzes, fishhooks, and ornaments. In 1995, the Polynesian Voyaging Society plans to sail *Hawai'i Loa* from Nuku Hiva in the Marquesas to Hawai'i, a 2,100 mile voyage.

The hulls of *Hawai'i Loa* were designed by Dick Rhodes, and Rudy and Barry Choy. Nainoa Thompson, Wright Bowman, Jr. and Wally Froiseth designed the other parts of the canoe. The construction of the 57-foot voyaging canoe by Kahuna Kālai Wa'a Wright Bowman, Jr. began in 1991, under funding by the Native Hawaiian Culture and Arts Program. The plan was to use traditional native materials in the construction. However, a search in Hawai'i's forests for koa logs large enough for the hulls of a voyaging canoe proved futile. So the kuamo'o, or hulls, have been carved from two spruce logs donated by the Tlingit and Haida tribes of Alaska. Native koa has been used for the manu, or gracefully curved bow and stern pieces, as well as for the mo'o, or side pieces. The 'iako or cross pieces, and kin, or masts, are made from 'ōhia logs. The railings are made from hau. Sennit was used for some of the lashings. Lily Jane Nunes and Elizabeth Akana wove the lauhala sails. Mary Lou Kekuewa made the lei hulu (feather lei).

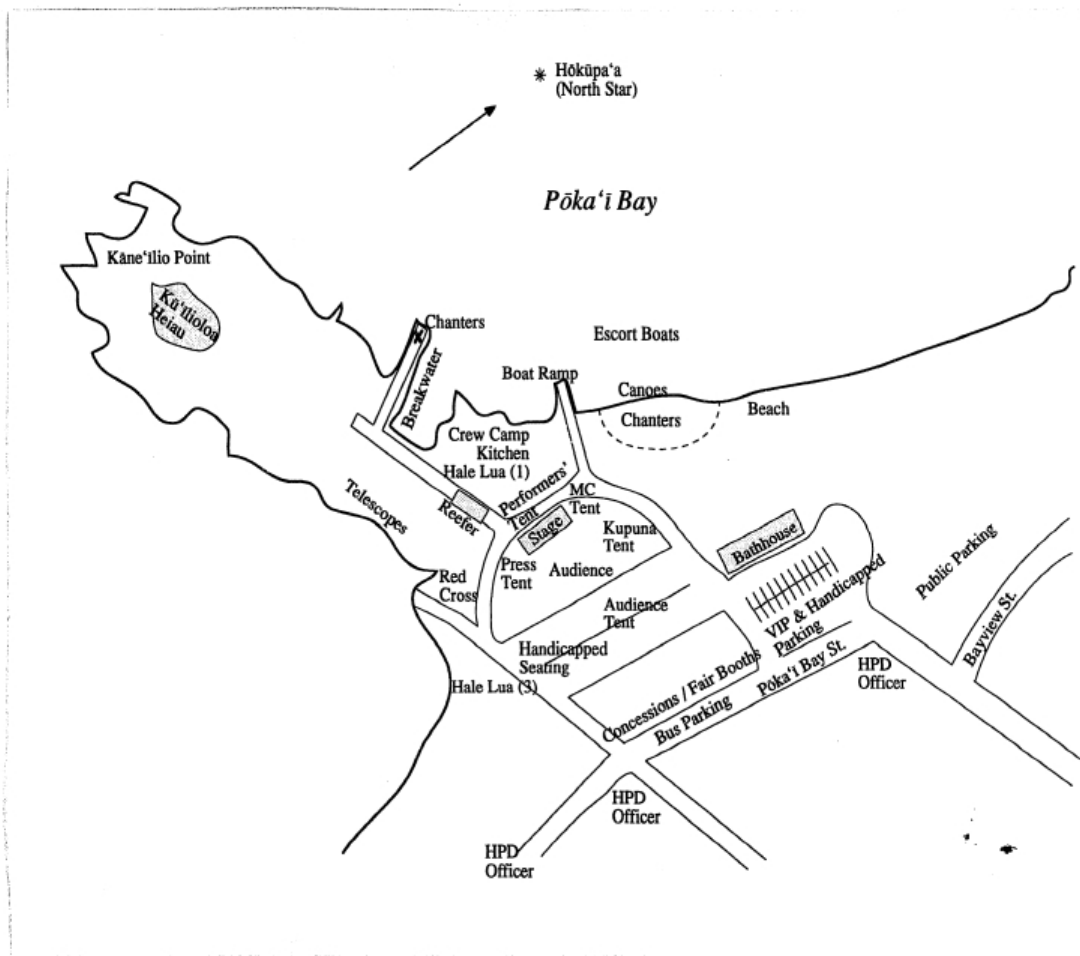
Acknowledgements

The *Hawai'i Loa* voyaging canoe is a project of the Bishop Museum Native Hawaiian Culture and Arts Program, in cooperation with the Polynesian Voyaging Society. The Native Hawaiian Culture and Arts Program is funded through a cooperative agreement with the National Park Service.

Bishop Museum and the Polynesian Voyaging Society wish to gratefully acknowledge the invaluable kokua of the following organizations and individuals:

Hawai'i Maritime Center
Hawaiian Crane and Rigging
Hawaiian Tug and Barge
Hawaiian Western Transport
Honolulu Police Department
Honolulu Shipyard
Honolulu Transfer & Storage
Kamehameha Schools/Bishop Estate
McCabe, Hamilton and Renny Co.
Na Kālai Wa'a of Mauloa
Nā Pua No'eau
Pu'uhonua o Honaunau/Jerry Shimoda and Staff
Richard Lee Trucking
Royal Contracting
SeAlaska Corporation
State Department of Safety and Motor Vehicles
State Department of Transportation--Harbors Division
Winkler Wood Products

and the hundreds of volunteers.



b. program details (July 24 and 31)

BLESSING & LAUNCHING CEREMONY FOR HAWAI'I LOA

Pier 36

July 24, 1993

(Revised July 12, 1993)

Preparation—July 22

All Day—bring Hōkūle'a to Pier 36 (Nainoa & Gil); begin clean up of Pier 36; begin decorations (Kealalauae).

6 p.m.—Dinner (Paige and Puna)

Preparation—July 23

All Day—Put E'ala, Mauloa, and Maika'i Roa in the water (Nainoa & Gil); Continue clean up of Pier 36; continue decorations (Kealalauae).

5:00 P.M.—Orientation for all crew and participants, including Bow, Nainoa, and Wally (by Randy, Kalena, Kalani, Keli'i)

6:00 P.M.—'Awa ceremony for Bow's crew (Keone & Rocky)

7:00 P.M.—Dinner (Sharon)

After Dinner—final set-up, as needed (Gil). The ceremonial area will be appropriately designated with the ahu serving as the central focal point (Bert). The stage will be set up (Gil) and the gate will be decorated (Kealalauae).

July 24—Blessing and Launching

- 7:00 A.M. Breakfast (Puna).
- 8:30 A.M. Dressing of Mauloa, E'ala, Maika'i Roa and Hōkūle'a (Roy Benham); Dressing of crew in kihei (Kalani); Astro-turf and lauhala mats will be laid out in a semi-circle (Kealalauae).
- 9:00 A.M. People will begin to arrive and will be seated by ushers from Keone Nunes' halau. Hawai'i Loa is held about a foot or less above the water by a crane, awaiting the signal to be lowered.
- 9:45 A.M. All those participating in the ceremonies will take their places (Kalani).
- 10:00 A.M. Randy will signal for the blowing of the pū three times for the beginning of the ceremony. After this, guests arriving will be seated quietly toward the back by Kealalauae's group. Parley Kanaka'ole will offer a mele kahea,

announcing the birth of a "chief"—Hawai'i Loa, the canoe. Parley will explain the ceremonial procedure, the essence of the ceremony, and what will signify its ending. He now announces that there will be silence during the entire ceremony up until the time when the canoe goes in the water.

- 10:15 A.M. Bert will begin the 'ai kapu ceremony. Keone will serve as his ha'i'ōlelo. The foods and the hiwa coconuts will be placed on the ahu. Then the gods are invited by Keone to imbue the foods with their mana, followed by a sampling of the foods by Kalena. Kalena, with the help of ten servers from Keone's halau, will then māhele the foods and hiwa-drink to those sitting in the ceremonial area. When the eating is completed, the blessing of the canoe and the lifting of the kapu are completed by Kalena. Then Hawai'i Loa is lowered into the water. The pū will sound three times, and Parley will lead the crowd in cheers of joy. The food and its remnants are placed in niu baskets by Keone and set aside by the ahu for the time being. Bert will assign two helpers to watch over the food.

- 10:45 A.M. Immediately after the kapu is lifted. Keli'i, as the mea oli of the kahuna kalai wa'a Wright Bowman, Jr., begins his part with a very impressive genealogy oli which he has created for Hawai'i Loa. As Keli'i chants, selected persons will board the canoe to outfit Hawai'i Loa (put up the mast, etc.) and to dress the canoe with lei.

After the outfitters and dressers disembark from the canoe, crew members go aboard and take their places. Keli'i's chant should be over by this time. The crew members will dip their paddles into the water while chanting "Ia Wa'a Nui" for at least two minutes (Keone responsible for teaching chant). They then disembark, returning to their seats in the ceremonial area. Their chanting is expected to end when the last person sits.

At the end of the crew's chanting, Keli'i turns to Clayton Hee, who represents NHCAP, the owners of the canoe, to ask in Hawaiian if he finds the canoe maika'i. Clayton says "maika'i" and the ceremony ends with pū blown by Sam Ka'ai.

- 11:15 A.M. Recognition of the delegation from Alaska—Judson Brown and Byron Mallott; oli; Parley describes the gift of logs from SeAlaska, gives the names of the logs (kutx ah yunahha kah ya tun) and their meanings. Parley introduces Brown and Mallot. Leis presentations; hula; presentation of gifts by Myron Thompson, with Clay Bertelmann and Wright Bowman, Sr., makers of the gifts. Judson Brown and Byron Mallott are invited to share their mana'o.

- 11:30 A.M. Palani Vaughn introduces dignitaries to make presentations to Hawai'i Loa, with each speaker given no more than 2.5 minutes.

Senate Chair, Culture Committee, Eloise Tungpalan
NHCAP Chair, Clayton Hee

Donald Duckworth, Bishop Museum
Nainoa Thompson

12 NOON Parley will introduce Kahu Kalili and will announce that following the blessing by Kahu Kalili, the audience may share their ho'okupu with Hawai'i Loa. Lunch will follow.

Kalena will take 'ai kapu foods out to sea for disposal in Mauloa. A crew needs to be designated for this purpose (Nainoa). Ahu is dismantled (Bert).

1:30 P.M. Pau. Pū will blow to signify the end of the program. Clean up.

August 7: Kōmiki meets to evaluate July 24 program, prepares thank you letters for mailing, submit same to Jar for execution, set final meeting.

KE KAHEA IA AKU NEI 'OUKOU APAU LOA
NO KA UKU, ALA KA IA 'OUKOU

E PAE I POKA'I *****NA HOLO WA'A NUI*****AMAMA, UA NOA

1

Report of the Komiki
for the Blessing and Launching of Hawai'i Loa
and Eia Ho'i Nā Holowa'a

Introduction

On July 24, in the middle of a cool and refreshing downpour, with nearly 700 witnesses present, Hawai'i Loa was blessed and launched at Pier 36. The next day the Wai'anae community launched an ocean conference, culminating in the arrival of five canoes *E'ala*, *Hawai'i Loa*, *Mauloa*, *Maika'i Roa*, and *Hōkūle'a* at Pōka'i Bay in Wai'anae on July 31. More than 1,000 people lined the shores to welcome these majestic canoes.

The two events were highly successful. People who attended the birth of Hawai'i Loa at Pier 36 were so deeply moved by the experience that they believe the day itself had a spirituality of its own. The arrival of the five canoes at Pōka'i Bay and the program that followed moved Wai'anae residents with the spirit of their canoe heritage.

Myron Thompson, president of the Polynesian Voyaging Society, who at the beginning of the summer of 1993 asked Moku Froiseth and Paige Barber to organize and coordinate the blessing of *Hawai'i Loa*, expressed his satisfaction with the results of their work.

Purpose

The purpose of this report is to provide guidelines to replicate events such as these in the future. We begin by providing an overview of the organizing effort, then present recommendations.

The Komiki

Once the request was made by Myron Thompson to prepare for the blessing and launching of Hawai'i Loa, Moku and Paige called on people who had served in various capacities over the years for the purpose of planning, implementing and coordinating events that involved the *Hōkūle'a*. Dennis Kawaharada was assigned from the PVS staff to help with the writing tasks.

The Program Plan

Soon after accepting this assignment it became obvious to these organizers that there were no written guidelines or protocol directions available for such events and given the time constraints, several actions needed to be taken immediately.

The first action was to ask Kaupena Wong for his advice and guidance, since he had handled both the blessing and launching of *Hōkūle'a* in 1975 (with Dr. Kenneth Emory of the Bishop Museum), and then the 1987 return of *Hōkūle'a* from the South Pacific. Moku and Paige also collected written materials that could also help guide the development of a plan.

At first the plan was to have one event to bless and launch *Hawai'i Loa* at Wai'anae. However, as logistical problems emerged, the organizers decided to have two events. First

a blessing and launching of *Hawai'i Loa* at Pier 36 on July 24th; and then a sail of three or more double hulled canoes to Pōka'i Bay for a celebration of Hawaiian voyaging canoes on July 31st. Wai'anae is home to more than 40,000 people, of which more than 50% are native Hawaiians. The double-hulled canoe *E'ala*, which was built at Pōka'i Bay in 1980, would be returning home.

A third component was developed by the Wai'anae community for conducting a week-long series of ocean-related activities and workshops leading up to the arrival of the five canoes at Pōka'i Bay.

(See attachments for detailed programs of these events and the activities leading up to the 24th and the 31st.)

The planning format covered three areas. The first was the overall purpose of the event, the second was the cultural rituals, the third was the appropriate closure of each piece, and then the entire program itself.

Staffing

Membership in the organizing committee grew as Moku assumed the role of chairperson, while Paige moved into the role of developing the program. However, there was no full time, experienced staff to attend to the many details, to call for meetings, to sort out issues and problems, and most importantly, to solve them.

As the details multiplied, Moku and Paige assigned the overall cultural and program coordination to Randie Fong, who worked with Kalena Silva and Bert Barber ('ai kapu ceremony for the 24th), Keli'i Tau'a (mea 'ōlelo for Wright Bowman, Jr. for the 24th) Kalani Akana (crew preparation for the 24th and chanting for the 31st), Parley Kanakaole and Wayne Chang (Emcees for the 24th); Parley Kanakaole (chants for Wai'anae for the 31st); Wayne Chang and Robin Makua (Emcees for 31st).

Food for the July 24th event—Puna Dawson

Decorations for the July 24th event—Kealalauae

Logistics for both July 24th and July 31st—Gil Ane.

Publicity for July 24th and 31st—Elisa Yadao with the help of Tina Shaeffer of Bishop Museum who handled the invitations for July 24th.

Sound and Entertainment for July 31st —Brickwood Galuteria and Keone Nunes.

Decoration of the Stage for 31st—Mililani Allen

In Wai'anae for the Pōka'i Bay event, the key players were

- Joe Lapilio
- Agnes Cope
- Koco Bungo
- Gege Kawelo
- Maxine Hee
- Halani Berard
- Eddie van Giesen
- Jackie Kahale-o-'Umi

- Gabe Kila
- Wai'anae Hawaiian Civic Club
- Black Hoohuli

Recommendation

Many difficulties had to do with confusion of lines of authority and lack of communication. To prevent such difficulties in the future, we recommend the following:

1. Have a written statement of purpose of the event and objectives, so that the planning committee can refer back to it and make sure the program is in keeping with the purpose and objectives.
2. Set up roles and responsibilities at the beginning of the process; make clear how people will be appointed and who has authority for what. Define roles of each program committee member in writing.
3. To make meetings less time consuming, have a small central committee make decisions and then delegate responsibilities to sub-committees. This small central committee could include the following:
 - a. Event Coordinator
 - appointed by PVS Board of Directors
 - sets agenda for meetings of central committee
 - assigns duties to committee members
 - makes sure everyone is doing their job; if not, reassigns jobs
 - oversees budget, with guidelines from PVS administrator
 - b. Program Coordinator
 - determines what needs to happen at the event
 - contacts speakers, chanters, musicians, dancers, etc.
 - on day of event, make sure program runs smoothly
 - c. Publicity and Public Information Coordinator
 - media plan
 - press packet
 - preceding the event, acts as spokesperson about the event to insure that accurate information is disseminated
 - on the day of event, directs media
 - d. Protocol Officer
 - cultural and political protocol
 - dignitaries and guests
 - invitations, as needed
 - leis, gifts, t-shirts, etc., as needed
 - on the day of the event, seats and looks after dignitaries and guests; makes sure leis and gifts are properly presented

e. Logistics Coordinator

- parking and traffic
- stage, tents, and chairs
- sound system
- sanitation
- decoration, etc.

f. Canoe / Crew Liaison Officer

- keeps the crew informed about the overall event and what will be expected of them
- insures the crew understands and is prepared for participation
- on the day of the event, maintains contact with and gives cues to captains / crew

g. Staff Writer

- keeps minutes for documentation of decision-making process
- assists committee in preparing agendas for meetings, letters to participants, and reports, as needed

h. Food and / or Concessions Coordinator (if needed)

Each member of the central committee should be appointed by the overall coordinator in consultation with PVS Board. Each member would head a subcommittee and select (or be assigned) enough subcommittee members (and a co-chair, if needed) to complete the tasks of the committee.

4. As soon as possible in the planning process, produce a list of names, addresses, and phone numbers of key people to facilitate communication.

4. To insure crew is prepared to participate in cultural events, add a cultural component to crew training, including, if possible, instruction in:

- cultural practices related to the blessing and launching of a canoe, arriving in new places and islands (including ho'okupu practices), and arriving back at home after a voyage.
- voyaging traditions
- Hawaiian language

The purpose of the training would be to prepare the crew to be ambassadors and teachers of Hawaiian voyaging traditions.

Attachment A.

Evaluation of Eia Ho'i Nā Holowa'a by Kalani Akana, coordinator of chanters

What Worked

- event started on time.
- the assembly of chanters was impressive, the creme de la creme
- the women chanters at the breakwater
- chanters briefing the captains and crews and offering a pule
- the shuttle taking chanters and dignitaries to the canoes
- the dignitaries on board the canoes
- the Mō'ikeha chant

What Didn't Work

- came in too quickly (no radio contact with shore), not allowing chanters time to finish their chants.
- crews did not understand their roles in the events on shore or in what order to proceed to the stage)
- the welcome onto the grassy area and the handling of the ho'okupu did not go smoothly (more supervision of ho'okupu needed; clearer understanding of what a ho'okupu is, and how to present and accept one.)
- volunteers did not show up; staffing was short-handed.

Recommendations for Program on 31st

- hold the welcome on the beach with the canoes as a backdrop, rather than on a grassy part area
- communicate to captains and crews on protocol, including chants to be chanted, timing of chants, and ho'okupu to be brought
- work with community to have it provide its own chanters for a welcome ceremony; this would greatly enhance community spirit (PVS should provide chanters on canoes)
- work with local canoe clubs on appropriate chants
- work with crew on a masculine hula that can be part of the landing and ho'okupu
- assign a protocol officer to help prepared crews for chanting, hula, and other forms of participation in events.

Recommendations for chanting and ritual

- chants should be more more heahea and less formal than the oli ho'okipa in the canoe to shore greeting
- incorporate some group chanting for volume and to increase 'okakala effect.
- incorporate a hula after men get off canoe; this should be masculine and virile to gain acceptance of crew by those on shore; in this way the Ho'okanaka Hawai'i process can take a firmer hold in the voyaging community and spread to the larger canoe-paddling community
- revive Kali'i ritual for special protocol occasions (this ritual involves hurling a spear at a chief as he lands on a canoe so he can display his dexterity and courage in dodging them).

PROGRAM PLAN FOR "EIA HO'I NĀ HOLO WA'A"
 Pōka'i Bay
 July 31, 1993
 (Revised July 29, 1993)

July 29—Preparation

- 5 P.M. Orientation (Randy, Paige, Puna / Buffalo, Nainoa)
- 6 P.M. 'Awa ceremony for the woman of the canoe (Sam Ka'ai)
- 6:30 P.M. Awa ceremony for E'ala Crew
- 7 P.M. 'Awa ceremony for '76 Crew (Sam Ka'ai)
- 8 P.M. Dinner (Paige, Puna)

July 30—Preparation

- 7 A.M. Breakfast (Paige, Puna)
- 8 A.M. Clean-up (All)
- 10 A.M. Canoes depart from Pier 36
- Evening Canoes appear off Nānākuli; welcome, with pū, pahu, oli, bonfire
- All Day Pōka'i Bay Set-up—two trailers set up as stages; sound system; tents, chairs, booths, kitchen; sanitois
- Night Canoes anchor at mouth of Pōka'i Bay
- 6—10 P.M. Dinner, Educational Program (Hālani Berard)

July 31—Eia Ho'i Nā Holo Wa'a/ Behold the Voyaging Canoes

- 4-5 A.M. Canoes move out of Pōka'i Bay in preparation for entry at 7 a.m.
- 6 A.M. Wayne Chang and Robin Makua will keep crowd informed as to the canoe's position and movements toward Pōka'i Bay beach. Rell Sunn and Brickwood Galuteria will be in charge of ship to shore communications and will link directly with Wayne and Robin.

- 7 A.M. Canoes will first be greeted by female chanters on breakwater wall, symbolizing the female/mother welcoming members of the 'ohana into Pōka'i Bay. Starting in this order from the end farthest out to sea, the chanters are: Vicky Holt Takamine, Mililani Allen, Leina'ala Kalama Heine. Providing support to these chanters will be Lani Kalama, who will be standing on the beach.

Canoes will arrive on the beach in this order:

1. *E'ala*: On canoe - Keone Nunes / On shore - Kamaki Kanahele
2. *Hawai'i Loa*: On canoe - Kamuela Chun / On shore - Kalani Akana
3. *Mauloa*: On canoe - Keli'i Tau'a / On shore - Charles Ka'upu
4. *Maika'i Roa*: On canoe - Tony Lenchenko / On shore - Manu Boyd
5. *Hokūle'a*: On canoe - Keli'i Reichel / On shore - Kalena Silva

As canoes approach breakwater wall, oli are given by women welcoming the canoes into a safe harbor, as they would their own children.

Chants are given from each of the five canoes with a response coming from shore.

Canoes begin to beach in above order; following the five canoes will be sailing and paddling canoes.

Several pū begin to sound as chanters escort crews to designated area. Crews chant "Ia Wa'a Nui."

- 8 A.M. Program begins—Navigators present ho'okupu of ulu and kō to the Wai'anae Coast. (The Wai'anae Coast will respond as appropriate.)
- Wayne Chang will explain the ho'okupu ceremony and the following event.
- Ho'okupu for canoes from the community
- Kūlia I Ka Pono Chorus (39 students / Kamehameha Summer School)

- 8:45 A.M. Tradition of Mo'ikeha, a chant by Kalani Akana, chanted by the composer with the help of Keli'i Tau'a, Keli'i Reichel, Kamaki Kanahele, Keone Nunes, Tony Lenchenko, Manu Boyd.

History of Modern Voyaging (Randie Fong)

- Ben Finney - the dreamer
- Pinky Thompson & PVS- carrier of the dream
- canoe builders
- other contributors to the project, i.e. weavers, volunteers, etc.
- navigators - Mau Piailug/Nainoa
- navigators 1995 Voyage - Chad, Bruce, Kimo, Shorty, and apprentices
- 1976 crew - Kawika, Gordon and other crew members (first to sail)

- for the future (educational voyaging) - DOE, NASA, other institutions
- presentation of adze by Mr. Goldin to PVS/Thompsons
- adze presented to Mr. Goldin by PVS
- mahalo to Wai'anae Community

Open floor to out-of-state guests and others

- Eni Hunkin, American Samoa
- Hector Busby, Aotearoa
- Judson Brown, Alaska
- Byron Mallott, Alaska
- Etc.

- 9:30 A.M. Entertainment (Dance)
- Alaskan Dance Group
 - Nā Pua Lei o Liko Lehua (Leina'ala Kalama Heine)
 - Hālau o Mililani (Mililani Allen)
 - Kapuwailanionohinohi'ula (Keone Nunes)
 - Pua Ali'i 'Ilima (Vicky Takamine Holt)

Entertainment (Music)

- Uka Good (Ryan Tang)
- Anuhea
- Lawai'a

Award ceremony for community contests

- All Day • Educational activities—e.g. canoe sailing, canoe building
• Concessions—Food and Fair Booths
- 4 P.M. Day events pau. Wayne reminds crowd of evening presentation, thanks everyone for their support and presence.
- 6 P.M. Dinner for crew, Alaskan and other guests (donations from community/Black Ho'ohuli/Wai'anae Hawaiian Civic Club)
- 6:45 P.M. Evening star presentation at Kū'ilioloa heiau
- 7:15 P.M. Twilight Presentation
 - 7:40 P.M. Star Gazing
 - 8:15 P.M. Question/Answer/Pau
- Telescopes from astronomy club available for public use
- Night Crew camp at Poka'i Bay, guests will stay at the Recreation Center.

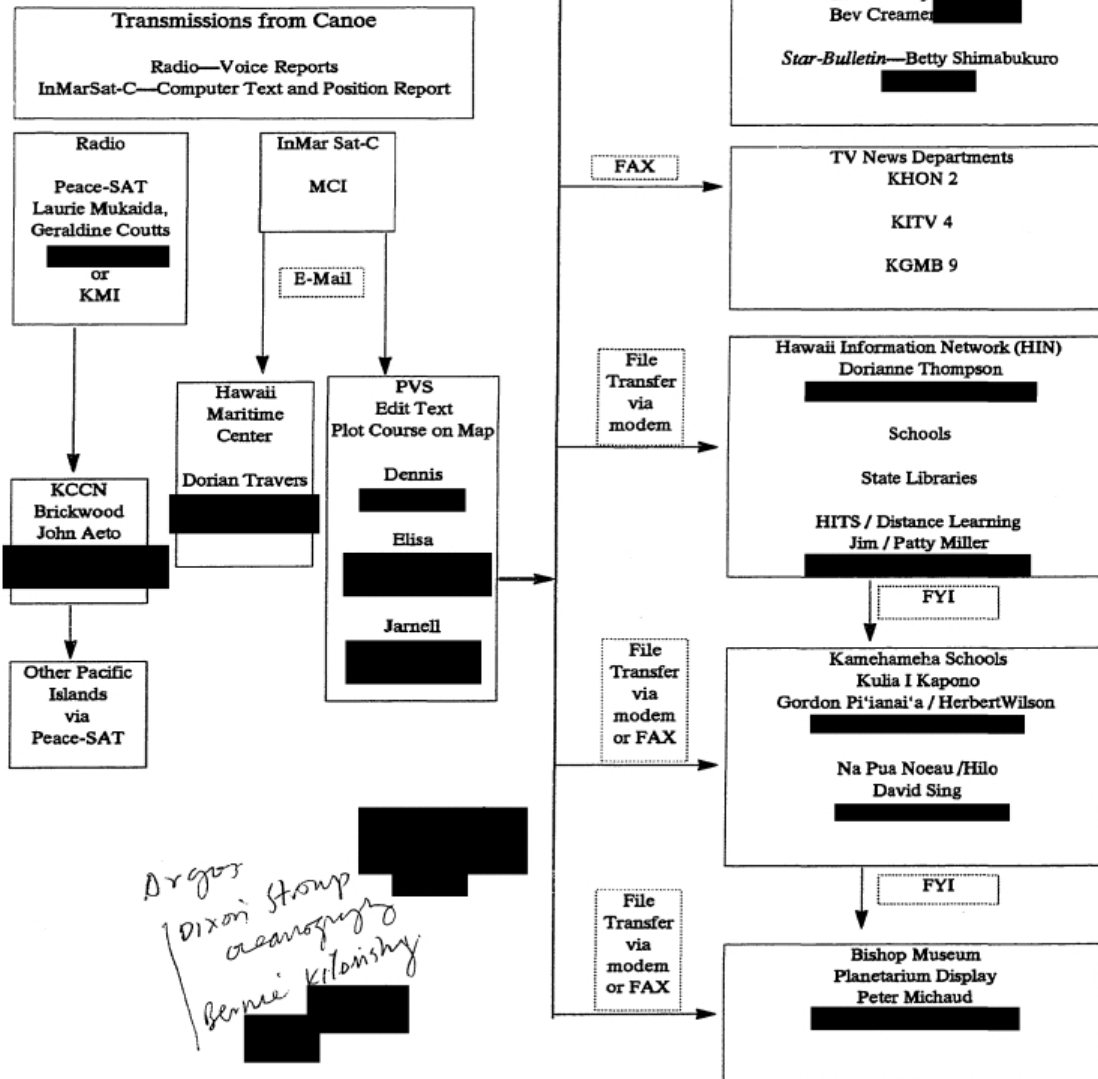
August 1: Departure

6 A.M. Crew breakfast

7 A.M. Pule; Canoes depart for Pier 36

AFTER CANOES DEPART—Clean-up

Daily Reports Flow of Information to Public



EDUCATION COMMITTEE
No Na Mamo

AETO, John K.S.
KCCN Broadcasting Co., Inc.
900 Fort Street Suite 400
Honolulu, Hawaii 96813
Tel. 536-2728
FAX 536-2528

AH MAI, Karen
UH/Social Science Res. Inst
2424 Maile Way
Porteus Hall Rm. 704
Honolulu, Hawaii 96822
Tel. 956-7342
FAX 956-2884

BANNAN, Jim
DOE-Distance Learning
3645 Waialae B302
Honolulu, Hawaii 96816
Tel. 737-2931
FAX 737-1760

BRYAN, Jon
HMC
Pier 7
Honolulu Harbor
Honolulu, Hawaii 96813
Tel. 523-6151
FAX 536-1519

COUTTS, Geraldine
UH at Manoa
PEACESAT/SSRI
Old Engineering Quad
Building 31
Honolulu, Hawaii 96822
Tel. 956-7794
FAX 956-2512

Harvey Meyerson
U.S.I.S.Y. Assoc.

GOHARA, Dawn
KCCN-On-Air Program
KCCN Broadcasting Co., Inc.
900 Fort Street Suite 400
Honolulu, Hawaii 96813
Tel. 536-2728
FAX 536-2528

INOUE, Anne
[REDACTED]
Honolulu, Hawaii 96825
[REDACTED]

KAWADAHARA, Dennis
PVS
c/o Hawaii Maritime Center
Pier 7
Honolulu Harbor
Honolulu, Hawaii 96813
Tel. 955-1406
FAX 536-1519

KILONSKY, Bernie
SOEST/PVS
c/o Hawaii Maritime Center
Pier 7
Honolulu Harbor
Honolulu, Hawaii 96813
Tel. 956-6574
FAX 536-1519

MARTINSON, Jarnelle
PVS
c/o Hawaii Maritime Center
Pier 7
Honolulu Harbor
Honolulu, Hawaii 96813
Tel. 532-1717
FAX 536-1519

DC 20024

FOX, Evarts
HMC
Pier 7
Honolulu, Harbor
Honolulu, Hawaii 96813
Tel. 532-1717
FAX 536-1519

MUKAIDA, Lori
PEACESAT/UH
Old Engineering Quad
Building 31
Honolulu, Hawaii 96822
Tel. 956-2505
FAX 956-2512

MURAKAMI, Colleen
DOE/Envir. Ed. Specialist
General Education Branch
189 Lunalilo Home Rd. 2nd Fl
Honolulu, Hawaii 96825
Tel. 396-2572
FAX 548-5390

OKADA, Charlotte
DOE/Envir. Ed.
General Education Branch
189 Lunalilo Home Rd. 2nd Fl
Honolulu, Hawaii 96825
Tel. 396-2554
FAX 548-5390

SAKATA, Dennis
DOE/Distance Learning
3645 Waiālae Ave. B302
Honolulu, Hawaii 96816
Tel. 737-2931
FAX 737-1760

MILLE, Patty
DOE-Teleschool Teacher
[REDACTED]
Honolulu, Hawaii 96816
[REDACTED]

THOMPSON, Dorianne
Hawaii, Inc.
201 Merchant Street - *DL*
Suite 1500
Honolulu, Hawaii 96813
Tel. 586-4636
FAX 586-4625

THOMPSON, Nainoa
PVS
c/o Hawaii Maritime Center
Pier 7
Honolulu Harbor
Honolulu, Hawaii 96813
Tel. 532-1717
FAX 536-1519

TRAVERS, Dorian
HMC
Pier 7
Honolulu Harbor
Honolulu, Hawaii 96816
Tel. 531-2989
FAX 536-1519

WATSON, Cliff
[REDACTED]
Honolulu, Hawaii 96830
[REDACTED]

WILSON, Herb
Kamehameha Schools
Kapalama Heights
Honolulu, Hawaii 96817
Te [REDACTED]

FAX [REDACTED]

YADAO, Elisa
KS/BE

[REDACTED]
Honolulu, Hawaii 96801
[REDACTED]

Report of the Komiki

Blessing and Launching

of

Hawai'i Loa

and

Eia Ho'i Na Holowa'a

***Prepared for the Polynesian Voyaging Society
Board of Directors Submitted by The Komiki
Prepared by Paige Barber and Dennis Kawaharada
November 13, 1993 (Draft)***

ACKNOWLEDGEMENTS

We especially thank every member of the Komiki and every person who served so graciously and under such tremendous demands. Our heartfelt gratitude to the board of directors and staff of the Polynesian Voyaging Society, whose assistance moved all of us forward to our goal; to our very able chanters and cultural experts for their loving guidance, support, contribution; for our committee chairs who stayed on course and with us all the way; for the crew of all the canoes who stood as special witnesses on the day of Hawai'i Loa's birth and again on the journey to Waianae; to the canoe builders for their unflagging dedication; to our families in Waianae for nurturing us both spiritually and physically; to those whose creativity made those wired gates, fences, and painted poles beautiful with fragrant flowers and fern; to those who went into the forest or to their local florist for the fragrant flowers and ferns and turned them into works of art that we adorned ourselves with and used to make Pier 36 beautiful; to those for dressing our canoes; for feeding our volunteers; for the cranes, the containers, the reefer, the tents, the chairs, the tables, the leis, the ahu, the tee shirts, the paddles, the shorts, the kiheis, the designs, the lauhala, the prayers, the music, the singing, the program designs and printing; the traffic control; for being good teachers and good students; for offering up your many talents, gifts, and love. We truly know that this was only made possible because we understand and embrace, each in our own way, the mission of the Polynesian Voyaging Society and the Native Hawaiian Culture and Arts Program. Over the years we ordinary people have accomplished awesome goals together and those results are the stuff that legends are made of. To accomplish those goals truly requires that we deeply believe in and enjoy what we do and that we do it with people we love.

Introduction

On July 24, with nearly 700 witnesses, Hawai'i Loa was blessed and launched at Pier 36. As befitting the birth of an ali'i, a rainbow appeared early that morning and crested high above Hokule'a's new sister. Throughout the day it rained on everyone and everything. The rain reminded some of us of the 1992 Raiatea experience where rain began to fall softly on the sacred marae, Taputapuātea, as Hokule'a appeared on the horizon. As Hoku neared her destination, the rain fell harder and harder until it drenched everyone and the aina itself could not absorb any more water and created large pools here and there. Finding no relief from the relentless downpour we sat wherever we could, many of us sitting in water up to our hips. But we were too caught up in the moment to complain, too grateful for being there and sharing what was for many of us a very special time. We were there to celebrate the gathering of Polynesian people and to practice again the customs of our ancestors. There at Taputapuātea we paid tribute to our ancestors who guided us there and thanked our cousins for so graciously receiving us in our ancient homeland.

So here we were on July 24, witnessing the birth of Hawai'i Loa. The specialness of that day and its connection with Taputapuātea was so strong it permeated the air like fragrant flowers. We held these private thoughts throughout the day and marvelled at how spiritually uplifting the day had become.

The next day, July 25, the Waianae community launched an ocean conference, culminating in the arrival of five canoes; E'ala, Hawai'i Loa, Mauloa, Maikai' Roa, and, Hokule'a, at Poka'i Bay on July 31. On that day, more more than a thousand people lined the beach front to welcome these majestic canoes to Poka'i Bay and to Kuilioloa heiau. And hundreds had already welcomed the canoes as they travelled along the Waianae coast to their Poka'i destination.

Throughout the day presentations were made by several organizations, a tribute to Moikeha all in our native language, dancing and music and accolades. Our volunteers and their families were feed by the tireless efforts of the Waianae Hawaiian Civic Club and when the sun set that evening the people of Waianae were especially moved by the great event. Here were the grandest of all of Polynesia's canoes, anchored in the bay of Poka'i.

Purpose

It has been the practice of the Polynesian Voyaging Society that the results of any big event be reported to the board of directors. We, the Komiki decided to prepare this written report to help those who will carry on similar events in the future. We offer tips, recommendations, problems, solutions and hopefully, humor. To laugh when things get really stressful is a very good sign that we still have all our marbles. Or some of our marbles.

The Komiki

Myron Thompson, president of the Polynesian Voyaging Society asked Moku Froiseth and Paige Barber to organize and coordinate the blessing of Hawai'i Loa. Moku assumed the position of Chair of the Komiki and built its membership by inviting people with various talents to help with the work. Paige took on the planning and organizing parts which resulted in two plans; the first for the launching and blessing of Hawai'i Loa at Pier 36 on July 24, 1993 and the second for the Waianae event which began on July 25 and ran through July 31. The theme of the Waianae event, which then became a celebration of our canoe heritage was "Eia Ho'i Na Holowa'a".

Dennis Kawaharada was assigned from the PVS staff to help with the writing tasks. Jarnelle Martinsen, also of the PVS staff, monitored and administered the Komiki's budget. While the overall effort was driven by the Komiki, a loosely put-together group of friends, the day-to-day operating decisions were made by Moku, Paige and Gil Ane. Decisions relating to the canoes and crew were made by Nainoa Thompson, Wallace Froiseth, Wright Bowman, Jr., and Chad Babayan.

As the blessing of Hawai'i Loa drew near, Randy Fong volunteered to take on directing program functions and Wayne Chang was asked to assist. During the early stages of planning Kaupena Wong provided valuable advice and guidance. Kalena Silva, Keli'i Tau'a, Kalani Akana and Bert Barber provided the leadership for our cultural activities. Leina'ala Heine, Rocky Jensen and Keone Nunes provided specific cultural direction for the awa ceremonies and related functions.

The group that provided the community input for the Waianae events were advisory and original leadership came from the Waianae

Coalition of Human Services headed by Joseph Lapilio. The Waianae Coast Culture and Arts Society and NHCAP was represented by Agnes Cope and the Waianae Hawaiian Civic Club was represented by George and Eugene Kawelo, as well as Maxine Hee.

The Plans and Planning Process

At first the plan was to bless and launch Hawai'i Loa in Waianae. However, as logistical problems emerged, the Komiki decided to switch the location to Pier 36. After several more discussions, the decision was made to have a special event in Waianae since other events had been held at Kualoa on the Windward side of O'ahu. By this time the idea of sailing five canoes to Waianae became a certainty. Maaloa would be brought from the island of Hawai'i, Maikai Roa from Hawai'i Kai. E'ala, a double hulled canoe built in Waianae was being restored at Pier 36. With Hokule'a and Hawai'i Loa, there would be five canoes making up the flotilla to Waianae, the first of its kind. Leading up to the arrival of the five canoes in Waianae would be a week long program of ocean related workshops. Excitement began to mount. And our growing anxiety moved right alongside the excitement. Could we put on two large scale events, back-to-back, without going crazy?

Two plans were developed and are included in this report. Meetings dealing with each plan were orchestrated and assignments confirmed with individuals both on O'ahu as well as from the neighbor islands. The plans were under constant revision as the dates drew closer.

While the Komiki assembled a talented group of people, the inclusion of a program director helped to bring clarity to the process and improved the capacity for people to function much more efficiently in their assignments. Moreover, we were able to see the gaps in our program plans, as well as problems we had not noticed before. The good news is that people stretched themselves to help cover as much as they could. This was volunteerism at its finest. The downside is that with one large event immediately following the other there was not much time to catch ones breath. The pace was extremely demanding and the number of volunteers were not always sufficient to carry on assignments.

July 24, 1993, The Blessing

The assignment here was clear. The Komiki needed to plan and implement the blessing of Hawai'i Loa. We added activities that were important from a cultural point of view before the actual blessing. Under the direction of the kalai wa'a, an awa ceremony was performed for the crew of Hawai'i Loa. Persons who received an announcement of the blessing were informed in advance that this event was designed to bring the family of Hokule'a and Hawai'i Loa together to witness Hawai'i Loa's birth launching, that one was expected to be a participant and not an observer, which so often happens at similar events. The result was beautiful and people came with a more reverent spirit, befitting the birth of a magnificent canoe.

Guest lists were compiled, announcements and programs designed and printed. Flowers and ferns were donated and master crafts people created a true Polynesian atmosphere at Pier 36. Flowers and fern were everywhere, perfuming the air and delighting the eye. Lei po'o made from mountain fern was created by the hula students of Leina'ala Heine. And, her group as well as others performed their dances and chants for our enjoyment.

A very touching decision was made to trim the branches of a young Chinese banyan tree whose branches were obstructing our view. An earlier request was to chop the tree down. To the side of this tree was placed the sacred ahu or altar and lauhala mats were borrowed for seating the crew of Hawai'i Loa. Logistical decisions helped establish a pattern for pedestrian purposes and seating.

Crew members were tutored on their ceremonial role before the event. They were taught a chant and received instructions on the cultural significance of the part that they would play. As a result, the collective effort of the crew was especially outstanding. Equally impressive was the orchestration of the raising and lowering of Hawai'i Loa by crane masters who navigated the placement of this new double hulled canoe into the waters of Pier 36. And the water of our ancestors poured down upon us for most of the day and we remembered Taputapuātea.

July 25 - July 31, 1993: Waianae

A committee of community leaders in Waianae was formed with the help of Agnes Cope. Over several weeks the events planned by that

community took shape and our plans for those events expanded accordingly. Beginning with a parade with children and adults dressed as fish and ocean forms, there were workshops on health and food topics, sessions on canoe voyaging and building, and a session on celestial navigation.

On July 30 the five canoes, Hawai'i Loa, Hokule'a, E'ala, Mauloa, and Maikai Loa anchored outside of Poka'i Bay and their crew rested for the evening. The following morning these five canoe, accompanied by a large group of sailing and paddling canoes officially entered the bay of Poka'i, welcomed by nearly a thousand people standing along the beach. Throughout the day there would be speeches, dances, songs, acknowledgements of people and contributions, but the highlights of the day included the welcoming chants by women chanters, the presentation of Moikeha's story in our native language, the presence of Polynesian friends and cousins who joined in the celebration, the tireless feeding of hundreds of volunteers by the Waianae Hawaiian Civic Club, the lovely decorations by Mililani Allen and the enjoyment of the day by hundreds of Waianae people, and last, but not least, exploring these canoes by hundreds of children from Waianae and elsewhere.

It has been said that the people of Waianae came to Poka'i Bay to see these five canoes and to rub shoulders with those who helped make this visit to their town a reality. They truly share in the pride that we have voyaged across the vast Pacific ocean according to the ways of our ancestors. It gives them pride in themselves, as much as in those who helped to make these events happen. They are able to connect with those who travelled on these voyages by looking at and touching the canoes that carried our modern voyagers across the big ocean., and consequently into the making of history. To borrow and paraphrase from Randy Fong's speech that day at Poka'i Bay, this is not only of canoes, no; this is about a people; a race; a nation that is coming into its own.

Special Events

With the help of Rocky Jensen and Keone Nunes three important events took place prior to the departure of the five canoes to Poka'i Bay. The first was the awa ceremony that reunited the original crew of the Hokule'a. This is especially memorable because it touched Tommy Holmes and others

who were part of that crew deeply and presented the opportunity to bring closure and provide new bonding to a very unique group of people. Tommy passed away only days after this event but we are left with the happiness he felt because this was done. The second awa ceremony involved the crew of E'ala, the double hulled canoe built by the Waianae Hawaiian Civic Club. Finally, the first awa ceremony for women was performed at Pier 36 and women who sacrificed and made contributions in the past, as well as those who are currently involved participated in this special event.

Strengths

- We share a common vision and mission
- We truly like each other and many of us are very good friends
- We are willing to work hard to achieve a common goal
- We have a great sense of humor
- We like to drink and party
- We are all a little bit crazy

Weaknesses

- We think we are omnipotent
- We don't always delegate well
- We say yes before we understand what you asked us to do
- We abuse our friends and family to help us with this crazy work

Recommendations

- Have a written statement of purpose of the event and objectives, so that the komiki can refer back to it and make sure the program is on track.
- Set up roles and responsibilities early, accompanied by an organizational chart. Make clear how people will be appointed and who has the authority for what. Define roles of each program committee in writing.
- When involving the community, be clear about the level of involvement, the leaders who will participate, how much decision making will be given the community or assumed by the PVS

- To make meetings less time consuming, have a small core group make decisions and then delegate responsibilities to subcommittees. This core group could include the following:

Event Director

- appointed by PVS Board
- sets agenda for meetings of central committee
- assigns duties to committee members
- makes sure everyone is doing their job, if not, reassigns jobs
- oversees budget, with guidelines from PVS administrator

Program Coordinator

- determines what needs to happen at the event
- contacts speakers, chanters, musicians, dancers, etc.
- on day of event, make sure program runs smoothly

Publicity and Public Information Coordinator

- media plan
- press packet
- preceding the event, acts as spokesperson about the event to insure that accurate information is disseminated
- on the day of event, directs media

Protocol Officer

- cultural and political protocol
- dignitaries and guests
- invitations, as needed
- leis, gifts, t-shirts, etc., as needed
- on the day of the event, seats and looks after dignitaries and guests, makes sure leis and gifts are properly presented
- if guests present leis or gifts, makes sure that these are properly handled and cared for

Logistics Coordinator

- parking and traffic
- stage, tents, and chairs

CORRECTION

THE PRECEDING DOCUMENT(S) HAS
BEEN REPHOTOGRAPHED TO ASSURE
LEGIBILITY
SEE FRAME(S)
IMMEDIATELY FOLLOWING

- sound system
- sanitation
- decoration, etc.
- clean up

Culture Officer

- Organizes and coordinates activities
- Assigns tasks and insures cultural practices are understood and are appropriate to the event and sensitively executed
- Provides training and or instruction when necessary

Canoe/Crew Liaison Officer

- keeps crew informed about overall events and what is expected of crew
- insures crew understands and is prepared to participate fully
- on the day of event, maintains contact with and gives cues to captains/crew

To insure crew is prepared to participate in cultural events, add a cultural component to crew training, including, if possible, instruction in:

- cultural practices related to the blessing and launching of a canoe, arriving in new places and islands (including ho'okupu practices), and arriving back at home after a voyage
- voyaging traditions
- Hawaiian language, chant and dance

The purpose of the training would be to prepare the crew to be ambassadors and teachers of Hawaiian voyaging traditions.

Staff writer

- keeps minutes for documentation of decision-making process

- assists committee in preparing agendas for meetings, prepares letters to participants, reports, etc.
- prepare list of names, addresses, and phone numbers of key people and circulate to facilitate communications
- serves as communications link when assigned

Attachment A.

Evaluation of Eia Ho'i Nā Holowa'a by Kalani Akana, coordinator of chanters

What Worked

- event started on time.
- the assembly of chanters was impressive, the creme de la creme
- the women chanters at the breakwater
- chanters briefing the captains and crews and offering a pule
- the shuttle taking chanters and dignitaries to the canoes
- the dignitaries on board the canoes
- the Mō'ikeha chant

What Didn't Work

- came in too quickly (no radio contact with shore), not allowing chanters time to finish their chants.
- crews did not understand their roles in the events on shore or in what order to proceed to the stage)
- the welcome onto the grassy area and the handling of the ho'okupu did not go smoothly (more supervision of ho'okupu needed; clearer understanding of what a ho'okupu is, and how to present and accept one.)
- volunteers did not show up; staffing was short-handed.

Recommendations for Program on 31st

- hold the welcome on the beach with the canoes as a backdrop, rather than on a grassy part area
- communicate to captains and crews on protocol, including chants to be chanted, timing of chants, and ho'okupu to be brought
- work with community to have it provide its own chanters for a welcome ceremony; this would greatly enhance community spirit (PVS should provide chanters on canoes)
- work with local canoe clubs on appropriate chants
- work with crew on a masculine hula that can be part of the landing and ho'okupu
- assign a protocol officer to help prepared crews for chanting, hula, and other forms of participation in events.

Recommendations for chanting and ritual

- chants should be more more heahea and less formal than the oli ho'okipa in the canoe to shore greeting
- incorporate some group chanting for volume and to increase 'okakala effect.
- incorporate a hula after men get off canoe; this should be masculine and virile to gain acceptance of crew by those on shore; in this way the Ho'okanaka Hawai'i process can take a firmer hold in the voyaging community and spread to the larger canoe-paddling community
- revive Kali'i ritual for special protocol occasions (this ritual involves hurling a spear at a chief as he lands on a canoe so he can display his dexterity and courage in dodging them).

b. program details (July 24 and 31)

BLESSING & LAUNCHING CEREMONY FOR HAWAI'I LOA

Pier 36

July 24, 1993

(Revised July 12, 1993)

Preparation—July 22

All Day—bring Hōkūle'a to Pier 36 (Nainoa & Gil); begin clean up of Pier 36; begin decorations (Kealalauae).

6 p.m.—Dinner (Paige and Puna)

Preparation—July 23

All Day—Put E'ala, Mauloa, and Maika'i Roa in the water (Nainoa & Gil); Continue clean up of Pier 36; continue decorations (Kealalauae).

5:00 P.M.—Orientation for all crew and participants, including Bow, Nainoa, and Wally (by Randy, Kalena, Kalani, Keli'i)

6:00 P.M.—'Awa ceremony for Bow's crew (Keone & Rocky)

7:00 P.M.—Dinner (Sharon)

After Dinner—final set-up, as needed (Gil). The ceremonial area will be appropriately designated with the ahu serving as the central focal point (Bert). The stage will be set up (Gil) and the gate will be decorated (Kealalauae).

July 24—Blessing and Launching

7:00 A.M. Breakfast (Puna).

8:30 A.M. Dressing of Mauloa, E'ala, Maika'i Roa and Hōkūle'a (Roy Benham); Dressing of crew in kihei (Kalani); Astro-turf and lauhala mats will be laid out in a semi-circle (Kealalauae).

9:00 A.M. People will begin to arrive and will be seated by ushers from Keone Nunes' hālau. Hawai'i Loa is held about a foot or less above the water by a crane, awaiting the signal to be lowered.

9:45 A.M. All those participating in the ceremonies will take their places (Kalani).

10:00 A.M. Randy will signal for the blowing of the pū three times for the beginning of the ceremony. After this, guests arriving will be seated quietly toward the back by Kealalauae's group. Parley Kanaka'ole will offer a mele kahea,

announcing the birth of a "chief"—Hawai'i Loa, the canoe. Parley will explain the ceremonial procedure, the essence of the ceremony, and what will signify its ending. He now announces that there will be silence during the entire ceremony up until the time when the canoe goes in the water.

- 10:15 A.M. Bert will begin the 'ai kapu ceremony. Keone will serve as his ha'i'ōlelo. The foods and the hiwa coconuts will be placed on the ahu. Then the gods are invited by Keone to imbue the foods with their mana, followed by a sampling of the foods by Kalena. Kalena, with the help of ten servers from Keone's halau, will then māhele the foods and hiwa-drink to those sitting in the ceremonial area. When the eating is completed, the blessing of the canoe and the lifting of the kapu are completed by Kalena. Then Hawai'i Loa is lowered into the water. The pū will sound three times, and Parley will lead the crowd in cheers of joy. The food and its remnants are placed in niu baskets by Keone and set aside by the ahu for the time being. Bert will assign two helpers to watch over the food.

- 10:45 A.M. Immediately after the kapu is lifted. Keli'i, as the mea oli of the kahuna kalai wa'a Wright Bowman, Jr., begins his part with a very impressive genealogy oli which he has created for Hawai'i Loa. As Keli'i chants, selected persons will board the canoe to outfit Hawai'i Loa (put up the mast, etc.) and to dress the canoe with lei.

After the outfitters and dressers disembark from the canoe, crew members go aboard and take their places. Keli'i's chant should be over by this time. The crew members will dip their paddles into the water while chanting "Ia Wa'a Nui" for at least two minutes (Keone responsible for teaching chant). They then disembark, returning to their seats in the ceremonial area. Their chanting is expected to end when the last person sits.

At the end of the crew's chanting, Keli'i turns to Clayton Hee, who represents NHCAP, the owners of the canoe, to ask in Hawaiian if he finds the canoe maika'i. Clayton says "maika'i" and the ceremony ends with pū blown by Sam Ka'ai.

- 11:15 A.M. Recognition of the delegation from Alaska—Judson Brown and Byron Mallott; oli; Parley describes the gift of logs from SeAlaska, gives the names of the logs (kutx ah yunahha kah ya tun) and their meanings. Parley introduces Brown and Mallot. Leis presentations; hula; presentation of gifts by Myron Thompson, with Clay Bertelmann and Wright Bowman, Sr., makers of the gifts. Judson Brown and Byron Mallott are invited to share their mana'o.

- 11:30 A.M. Palani Vaughn introduces dignitaries to make presentations to Hawai'i Loa, with each speaker given no more than 2.5 minutes.

Senate Chair, Culture Committee, Eloise Tungpalan
NHCAP Chair, Clayton Hee

Donald Duckworth, Bishop Museum
Nainoa Thompson

- 12 NOON Parley will introduce Kahu Kalili and will announce that following the blessing by Kahu Kalili, the audience may share their ho'okupu with Hawai'i Loa. Lunch will follow.
- Kalena will take 'ai kapu foods out to sea for disposal in Mauloa. A crew needs to be designated for this purpose (Nainoa). Ahu is dismantled (Bert).
- 1:30 P.M. Pau. Pū will blow to signify the end of the program. Clean up.
- August 7: Kōmiki meets to evaluate July 24 program, prepares thank you letters for mailing, submit same to Jar for execution, set final meeting.

PROGRAM PLAN FOR "EIA HO'I NĀ HOLO WA'A"
 Pōka'i Bay
 July 31, 1993
 (Revised July 29, 1993)

July 29—Preparation

- 5 P.M. Orientation (Randy, Paige, Puna / Buffalo, Nainoa)
- 6 P.M. 'Awa ceremony for the woman of the canoe (Sam Ka'ai)
- 6:30 P.M. Awa ceremony for E'ala Crew
- 7 P.M. 'Awa ceremony for '76 Crew (Sam Ka'ai)
- 8 P.M. Dinner (Paige, Puna)

July 30—Preparation

- 7 A.M. Breakfast (Paige, Puna)
- 8 A.M. Clean-up (All)
- 10 A.M. Canoes depart from Pier 36
- Evening Canoes appear off Nānākuli; welcome, with pū, pahu, oli, bonfire
- All Day Pōka'i Bay Set-up—two trailers set up as stages; sound system; tents, chairs, booths, kitchen; sanitois
- Night Canoes anchor at mouth of Pōka'i Bay
- 6—10 P.M. Dinner, Educational Program (Halani Berard)

July 31—Eia Ho'i Nā Holo Wa'a/ Behold the Voyaging Canoes

- 4-5 A.M. Canoes move out of Pōka'i Bay in preparation for entry at 7 a.m.
- 6 A.M. Wayne Chang and Robin Makua will keep crowd informed as to the canoe's position and movements toward Pōka'i Bay beach. Rell Sunn and Brickwood Galuteria will be in charge of ship to shore communications and will link directly with Wayne and Robin.

7 A.M. Canoes will first be greeted by female chanters on breakwater wall, symbolizing the female/mother welcoming members of the 'ohana into Pōka'i Bay. Starting in this order from the end farthest out to sea, the chanters are: Vicky Holt Takamine, Mililani Allen, Leina'ala Kalama Heine. Providing support to these chanters will be Lani Kalama, who will be standing on the beach.

Canoes will arrive on the beach in this order:

1. *E'ala*: On canoe - Keone Nunes / On shore - Kamaki Kanahele
2. *Hawai'i Loa*: On canoe - Kamuela Chun / On shore - Kalani Akana
3. *Mauloa*: On canoe - Keli'i Tau'a / On shore - Charles Ka'upu
4. *Maika'i Roa*: On canoe - Tony Lenchenko / On shore - Manu Boyd
5. *Hōkūle'a*: On canoe - Keli'i Reichel / On shore - Kalena Silva

As canoes approach breakwater wall, oli are given by women welcoming the canoes into a safe harbor, as they would their own children.

Chants are given from each of the five canoes with a response coming from shore.

Canoes begin to beach in above order; following the five canoes will be sailing and paddling canoes.

Several pū begin to sound as chanters escort crews to designated area. Crews chant "Ia Wa'a Nui."

8 A.M. Program begins—Navigators present ho'okupu of ulu and kō to the Wai'anae Coast. (The Wai'anae Coast will respond as appropriate.) Wayne Chang will explain the ho'okupu ceremony and the following event.

Ho'okupu for canoes from the community

- Kūlia I Ka Pono Chorus (39 students / Kamehameha Summer School)

8:45 A.M. Tradition of Mo'ikeha, a chant by Kalani Akana, chanted by the composer with the help of Keli'i Tau'a, Keli'i Reichel, Kamaki Kanahele, Keone Nunes, Tony Lenchenko, Manu Boyd.

History of Modern Voyaging (Randie Fong)

- Ben Finney - the dreamer
- Pinky Thompson & PVS- carrier of the dream
- canoe builders
- other contributors to the project, i.e. weavers, volunteers, etc.
- navigators - Mau Piailug/Nainoa
- navigators 1995 Voyage - Chad, Bruce, Kimo, Shorty, and apprentices
- 1976 crew - Kawika, Gordon and other crew members (first to sail)

- for the future (educational voyaging) - DOE, NASA, other institutions
- presentation of adze by Mr. Goldin to PVS/Thompsons
- adze presented to Mr. Goldin by PVS
- mahalo to Wai'anae Community

Open floor to out-of-state guests and others

- Eni Hunkin, American Samoa
- Hector Busby, Aotearoa
- Judson Brown, Alaska
- Byron Mallott, Alaska
- Etc.

9:30 A.M.

Entertainment (Dance)

- Alaskan Dance Group
- Nā Pua Lei o Liko Lehua (Leina'ala Kalama Heine)
- Halau o Mililani (Mililani Allen)
- Kapuwailanionohinohi'ula (Keone Nunes)
- Pua Ali'i 'Ilima (Vicky Takamine Holt)

Entertainment (Music)

- Uka Good (Ryan Tang)
- Anuheā
- Lawai'a

Award ceremony for community contests

All Day

- Educational activities—e.g. canoe sailing, canoe building
- Concessions—Food and Fair Booths

4 P.M.

Day events pau. Wayne reminds crowd of evening presentation, thanks everyone for their support and presence.

6 P.M.

Dinner for crew, Alaskan and other guests (donations from community/Black Ho'ohuli/Wai'anae Hawaiian Civic Club)

6:45 P.M.

Evening star presentation at Kū'ilioloa heiau

- 7:15 P.M. Twilight Presentation
- 7:40 P.M. Star Gazing
- 8:15 P.M. Question/Answer/Pau

Telescopes from astronomy club available for public use

Night

Crew camp at Pōka'i Bay, guests will stay at the Recreation Center.

August 1: Departure

6 A.M. Crew breakfast

7 A.M. Pule; Canoes depart for Pier 36

AFTER CANOES DEPART—Clean-up

E PAE I POKA'I (7/27/93)

KANI'ALA AKAKA

1. (REPEAT) +++++E PAE I POKA'I-land at Poka'i

LEA KA WAHINE WA'A KAUKAHI-Lea, the woman of the single-hulled canoe

KU-PULUPULU, KU-MOKUHALI'I-of the tinder/outspread island

KU-ALANA-WAO, KU-HO'OHOLA PALI-free will offering/runs up the cliff

KU-NEA-LUKA, KUPA-'AI-KE'E-/swivel adze

KU-PEPEIAO-LOA, KU'ILIO-LOA (KU)-long eared Ku/large dogged heiau

NA AKUA KA AI WA'A APAU-all the deities that control canoes

KE KAHEA IA AKU NEI 'OUKOU APAU LOA-all of you are called upon

NO KA UKU, ALA KA IA 'OUKOU-for the reward of your leadership

2. E PAE I POKA'I

KA WA'A O HAWAI'I-the canoe of Hawai'i

KA WA'A KAUKAHI-the single-hulled canoe

KA WA'A MAULOA-the canoe Mauloa

NA PO'E O KE KO'I-the people of the adze

NA KO'I KUA, LOU A KIKONI-(KU)hewing, reversible, & little adze

NA AKUA KA AI WA'A APAU

KE KAHEA IA AKU NEI 'OUKOU APAU LOA

NO KA UKU, ALA KA IA 'OUKOU

3. E PAE I POKA'I

E 'ALA - HE WA'A O KU'ILIO-LOA-canoe of Ku'ilio-loa

HAWAI'ILOA - HE WA'A KAULUA HOU-a new double-hull canoe

MAKA'I ROA - HE WA'A KAUKAHI-a single-hull canoe

HOKULE'A - MAKUAHINE O NA HOLO WA'A-mother of the sailing canoes

MAULOA - HE WA'A O NA PO'E KO'I(KU)-canoe of the adzemen

NA AKUA KA AI WA'A APAU

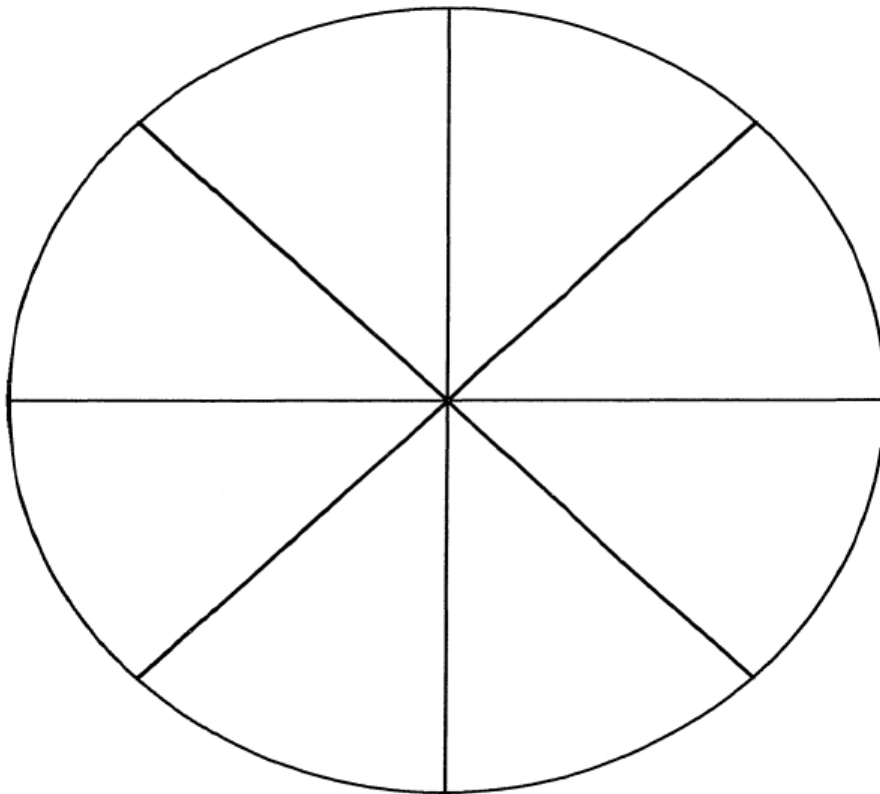
³¹
LIST AND ASSIGNMENTS FOR JULY 24, 1993
Meeting on Saturday, June 26, 1993
Pier 35/36
10:00 a.m.

| | |
|--------------------------|---|
| MC: | Wayne Chang Robin Makua |
| Ship to Shore: | Brickwood Galuteria Rell Sun |
| Chanters: | Mililani Allen Leina'ala Kalama Heine Vicky Takamine Lani Kalama |
| | Eala: Keoni Nunes/ Kamake Kanahele |
| | Hawai'i Loa: Kamuela Chun/ Kalani Akana |
| | Mauloa: Keli'i Tau'a/Charles Kaupu |
| | Maikai Roa: Moon Kauakahi/Manu Boyd |
| | Hokule'a: Keli'i Reichel/Kalena Silva |
| Concessions: | Gege Kawelo Freda Gomes |
| Traffic/Security | Gilbert Ane/Gabe Kila |
| Park | Jackie Kahale-O-Umi |
| Meals: | Gege Kawelo |
| Beach Roping Off: | Edith Van Geison |
| Shuttle: | Gilbert Ane |
| Cottages: | Koco Bungo |
| Hale Lua: | Koco Bungo |

page two

| | |
|------------------------------|-------------------------------|
| Stage: | Koco Bungo/Gilbert Ane |
| Sound: | Brickwood Galuteria |
| Leis for Dignitaries: | Moku Froiseth |
| Parking: | Gilbert Ane/Gabe Kila |
| Tent: | Koco Bungo/Gilbert Ane |
| Family: | Lurline Degagne |
| TShirts: | Wainwright Piena |
| Community Activities: | Joe Lapilio |
| Church Services: | Moku Froiseth |
| PR/Media: | Elisa Yadao |

_____ : _____



He wahi manaʻo:

DOCUMENTS CAPTURED AS RECEIVED



DOCUMENTS CAPTURED AS RECEIVED

Program Notes

July 24 marks the culmination of nearly three years of work by hundreds of volunteers, who, under the direction of Nainoa Thompson and *Kahuna Kālai Wa'a* Wright Bowman, Jr., have given their time and talent to create *Hawai'i Loa*. This 57-foot double-hulled voyaging canoe is fashioned from two spruce logs donated by the Haida and Tlingit tribes of Alaska, and materials from native Hawaiian trees and plants. In 1995, *Hawai'i Loa* will sail more than 2,000 miles from the Marquesas Island to Hawai'i, rediscovering and learning the open ocean route of early Polynesian voyagers.

Hawai'i Loa and her crew are ready to face the challenge of the open ocean. We invite you, as a member of our canoe family, to be a part of the blessing and launching ceremony of *Hawai'i Loa*.

At 10:00 a.m., the gates to Pier 35 will be closed to allow participants to give full attention to the ceremony. Silence is required for the ritual and prayers. The sounding of the pū by Sam Ka'ai will open the ceremonial portion of the program. As Parley Kanaka'ole opens the ceremony, we must be mindful that the *Hawai'i Loa* has been under *kapu* since the idea of her creation was born.

During the 'ai *kapu* ceremony, the first serving of the sacred foods prepared by *Kahu 'Ai Kapu* Bert Kaihe Barber will be offered at the *ahu* (altar) to our canoe deities, foremost of which is Kū. Next, *Kahuna Pule* Kalena Silva will accept portions of the sacred foods and present them to those persons seated before the *ahu*. After the food offerings, he will bless *Hawai'i Loa* and lift the *kapu*. Then the canoe will be launched, arousing cheers from participants.

Mea oli Keli'i Tau'a will present, on behalf of *Kahuna Kālai Wa'a* Wright Bowman, Jr., a *mele inoa* of *Hawai'i Loa*'s creation. The responsibility for *Hawai'i Loa* will then be transferred to the Bishop Museum Native Hawaiian Culture and Arts Program. The sounding of the pū by Sam Ka'ai will close the ceremonial portion of the program. Lunch and impromptu music and dance will follow.

The Bishop Museum Native Hawaiian
Culture and Arts Program,
the Polynesian Voyaging Society,
and hundreds of volunteers

cordially invite you to join in a

Blessing and Launching Ceremony
for

Hawai'i Loa

a Polynesian voyaging canoe built from natural materials.

**Saturday, July 24 at 10:00 a.m.
Pier 35, Honolulu Harbor**

Please reply to 531-7240 by July 19

NOTES FOR RECOGNITION CEREMONY
Revised July 12, 1993

Koa plaques for "Nā Kahuna Kālai Wa'a—Master Canoe Builders" will go to the following men for outstanding contributions as Kahuna Kālai Wa'a in the building of *Hawai'i Loa*:

4

- Wright Bowman, Sr.
- Wright Bowman, Jr.
- Phillip Chris Naone
- Wallace Frank Froiseth

Naone and Froiseth were also Kahuna Kālai Wa'a for the building of *E'ala* in 1980.

Koa plaques will be given to the following two Kālai Wa'a for their outstanding work in the completion of *Mauloa*:

4

- ✕ • Mau Pailug is a master canoe builder (equivalent to Kahuna Kālai Wa'a) from Satawal, Micronesia. Mau was *Hōkūle'a*'s navigator on its first voyage to Tahiti in 1976. Mau returned to Satawal this summer. Accepting the award for Mau will be his cousin Max Yarawamai.
- ✕ • Tava Taupu, from Nuku Hiva, Marquesas Islands, was Mau's outstanding apprentice in the building of *Mauloa*. Tava is a crew member on *Hōkūle'a*.

Koa plaques will be given to the following two Nā Kahuna Kālai Wa'a for their outstanding contributions to the Hawaiian and Polynesian canoe-building heritage:

- ✕ • Puaniho Tauataha, from Tautira, Tahiti. A master canoe builder and champion canoe paddler of Maire Nui Canoe Club of Tautira. Puaniho passed away in 1993. Dearly loved and respected for his knowledge of canoe building and paddling. He was the builder of *Maika'i Roa*, one of the five canoes in this canoe celebration. Accepting the award for Puaniho will be either his wife Mahine (from Tautira, Tahiti) or his son Freddie (who resides in Honolulu).
- ✕ • Le Van Keola Sequeira, from Lahaina, Maui. Kahuna Kālai Wa'a of the Wa'a Kaulua *Mo'olele* of Lahaina. Sister canoe of *E'ala*.

4

Koa plaques will be given to Aunty Lily Jane Nunes and Aunty Elizabeth Akana for the weaving of the lauhala sails for *Hawai'i Loa*; and to Aunty Mary Lou Kekuewa for the making of the lei hulu for *E'ala* and *Hawai'i Loa*.

Koa paddles will be awarded to the following five crew members who contributed to our seafaring heritage during the first voyage of *Hōkūle'a* in 1976:

- Boogie Kalama
- Buffalo Keaulana
- Mel Kinney
- ~~Penny Rawlins Martin~~
- Maka'ala Yates

7

19

- Kaupena
- Kimo Hughes
- But
- Herb Kane
- ✕ Judson - Adze
- ✕ Byron - Adze
- ✕ Hector - Adze
- ✕ Dad - Adze
- ✕ Wil
- ✕ Aizawa
- ✕ Galdin

LAUNCH/BLESSING BUDGET

| | # of Persons | Rate | # of Hours | Total |
|------------------------------|--------------|------------|------------|--------------------|
| Launching/Blessing - Pier 36 | | | | |
| Meals: | | | | |
| July 22 - Dinner | 1 | \$100.00 | 1 | \$100.00 |
| July 23 - Dinner | 75 | \$10.00 | 1 | \$750.00 |
| July 24 - Breakfast | 75 | \$5.00 | 1 | \$375.00 |
| Travel: | | | | |
| Airfare - Planning | 17 | \$90.00 | 2 | \$3,060.00 |
| Airfare - July 24 | 10 | \$90.00 | 1 | \$900.00 |
| Ceremonies: | | | | |
| Lei's - Dignitaries | 24 | \$9.00 | 1 | \$216.00 |
| Lei's - Canoes | 0 | \$0.00 | 0 | \$0.00 |
| Ahu/Place Mats | 0 | \$0.00 | 0 | \$0.00 |
| Decorations | 1 | \$50.00 | 1 | \$50.00 |
| Kihei - 26 | 26 | \$5.00 | 1 | \$130.00 |
| Lauhala Mats | 10 | \$0.00 | 0 | \$0.00 |
| Al Kapu ceremony | 1 | \$500.00 | 1 | \$500.00 |
| Paina | 1 | \$1,500.00 | 1 | \$1,500.00 |
| Entertainment: | | | | |
| Sound System | 1 | \$75.00 | 1 | \$75.00 |
| Invitations/Programs: | | | | |
| Invitations | 600 | \$2.00 | 1 | \$1,200.00 |
| Programs | 400 | \$2.50 | 1 | \$1,000.00 |
| Traffic/Safety: | | | | |
| Traffic Police Officers | 4 | \$25.00 | 5 | \$500.00 |
| Police Scouts | 6 | \$5.00 | 10 | \$300.00 |
| Miscellaneous: | | | | |
| Tents/Tables/Chairs | 1 | \$970.00 | 1 | \$970.00 |
| Sani-Tois | 6 | \$0.00 | 0 | \$0.00 |
| Crane | 1 | \$300.00 | 1 | \$300.00 |
| Reefer | 1 | \$300.00 | 1 | \$300.00 |
| Telephone | 1 | \$150.00 | 1 | \$150.00 |
| TOTAL | | | | \$12,376.00 |

LAUNCH/BLESSING BUDGET[illegible]

EIA HO'I NĀ HOLO WA'A
Pōka'i Bay
July 31, 1993
(Revised July 29, 1993)

July 29—Preparation

- 5 P.M. Orientation (Randy, Paige, Puna / Buffalo, Nainoa)
- 6 P.M. 'Awa ceremony for the woman of the canoe (Sam Ka'ai)
- 6:30 P.M. Awa ceremony for E'ala Crew
- 7 P.M. 'Awa ceremony for '76 Crew (Sam Ka'ai)
- 8 P.M. Dinner (Paige, Puna)

July 30—Preparation

- 7 A.M. Breakfast (Paige, Puna)
- 8 A.M. Clean-up (All)
- 10 A.M. Canoes depart from Pier 36
- Evening Canoes appear off Nānākuli; welcome, with pū, pahu, oli, bonfire
- All Day Pōka'i Bay Set-up—two trailers set up as stages; sound system; tents, chairs, booths, kitchen; sanitois
- Night Canoes anchor at mouth of Pōka'i Bay
- 6—10 P.M. Dinner, Educational Program (Hālani Berard)

July 31—Eia Ho'i Nā Holc Wa'a/ Behold the Voyaging Canoes

- 4-5 A.M. Canoes move out of Pōka'i Bay in preparation for entry at 7 a.m.
- 6 A.M. Wayne Chang and Robin Makua will keep crowd informed as to the canoe's position and movements toward Pōka'i Bay beach. Rell Sunn and Brickwood Galuteria will be in charge of ship to shore communications and will link directly with Wayne and Robin.
- 7 A.M. Canoes will first be greeted by female chanters on breakwater wall, symbolizing the female/mother welcoming members of the 'ohana into

Pōka'i Bay. Starting in this order from the end farthest out to sea, the chanters are: Vicky Holt Takamine, Mililani Allen, Leina'ala Kalama Heine. Providing support to these chanters will be Lani Kalama, who will be standing on the beach.

Canoes will arrive on the beach in this order:

1. *E'ala*: On canoe - Keone Nunes / On shore - Kamaki Kanahele
2. *Hawai'i Loa*: On canoe - Kamuela Chun / On shore - Kalani Akana
3. *Mauloa*: On canoe - Keli'i Tau'a / On shore - Charles Ka'upu
4. *Maika'i Roa*: On canoe - Tony Lenchenko / On shore - Manu Boyd
5. *Hōkūle'a*: On canoe - Keli'i Reichel / On shore - Kalena Silva

As canoes approach breakwater wall, oli are given by women welcoming the canoes into a safe harbor, as they would their own children.

Chants are given from each of the five canoes with a response coming from shore.

Canoes begin to beach in above order; following the five canoes will be sailing and paddling canoes.

Several pū begin to sound as chanters escort crews to designated area. Crews chant "Ia Wa'a Nui."

8 A.M. Program begins—Navigators present ho'okupu of ulu and kō to the Wai'anae Coast. (The Wai'anae Coast will respond as appropriate.)

Wayne Chang will explain the ho'okupu ceremony and the following event.

Ho'okupu for canoes from the community.

8:45 A.M. Tradition of Mo'ikeha (Kalani Akana, Keli'i Tau'a, Keli'i Reichel, Kamaki Kanahele, Keone Nunes, Tony Lenchenko, Manu Boyd)

History of Modern Voyaging (Sam Ka'ai)

- Ben Finney - the dreamer
- Pinky Thompson & PVS- carrier of the dream
- canoe builders
- other contributors to the project, i.e. weavers, volunteers, etc.
- navigators - Mau Piailug/Nainoa
- navigators 1995 Voyage - Chad, Bruce, Kimo, Shorty, and apprentices
- 1976 crew - Kawika, Gordon and other crew members (first to sail)
- for the future (educational voyaging) - DOE, NASA, other institutions
- presentation of adze by Mr. Goldin to PVS/Thompsons
- adze presented to Mr. Goldin by PVS
- mahalo to Wai'anae Community

Recognition ceremony (plaques, paddles, certificates)

Open floor to out-of-state guests and others

- Hector Busby
- Judson Brown
- Byron Mallott
- Alaskan Dance Group
- Etc.

- 9:30 A.M. Entertainment (Dance)
- Kūlia I Ka Pono Chorus (39 students / Kamehameha Summer School)
 - Nā Pua Lei o Liko Lehua (Leina'ala Kalama Heine)
 - Hālau o Mililani (Mililani Allen)
 - Kapuwailanionohinohi'ula (Keone Nunes)
 - Pua Ali'i 'Ilima (Vicky Takamine Holt)

- Entertainment (Music)
- Uka Good (Ryan Tang)
 - Anuhea
 - Lawai'a

Award ceremony for community contests

- All Day • Educational activities—e.g. canoe sailing, canoe building
• Concessions—Food and Fair Booths
- 4 P.M. Day events pau. Wayne reminds crowd of evening presentation, thanks everyone for their support and presence.
- 6 P.M. Dinner for crew, Alaskan and other guests (donations from community/Black Ho'ohuli/Wai'anae Hawaiian Civic Club)
- 6:45 P.M. Evening star presentation at Kū'ilioloa heiau
- 7:15 P.M. Twilight Presentation
 - 7:40 P.M. Star Gazing
 - 8:15 P.M. Question/Answer/Pau
- Telescopes from astronomy club available for public use
- Night Crew camp at Pōka'i Bay, guests will stay at the Recreation Center.

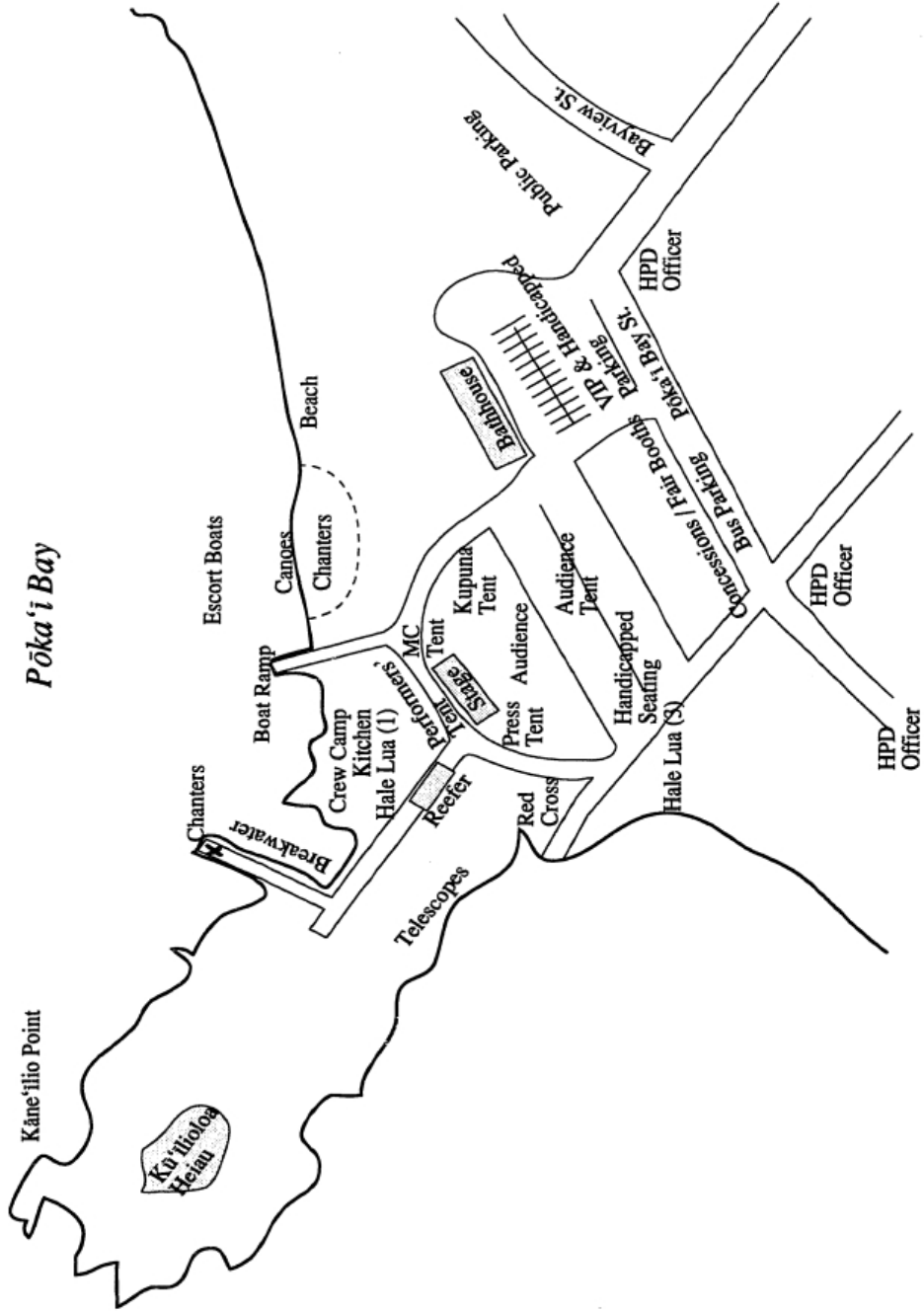
August 1: Departure

- 6 A.M. Crew breakfast
- 7 A.M. Pule; Canoes depart for Pier 36
- AFTER CANOES DEPART—Clean-up

* Hōkūpa'a
(North Star)

Kāne'ilio Point

Pōka'i Bay



Hawaii Loa Blessing Launching: Work Schedule Events

| Event | Date | Related Activity | Time & Place | Deadline | Coordinator | Assisted by / Delegated | Date Completed | Budget: Proposed | Budget: Actual |
|------------------------|-----------------|---------------------------------------|--------------------|----------|---------------|-------------------------|----------------|------------------|----------------|
| Prepare Canoes & Pier | July 22, Thurs. | Move Canoes | Pier 36 | | Nainoa | Gil | | | |
| | | Dinner <i>for preparation July 30</i> | | | Nainoa | | | \$300.00 | |
| | | Clean-up Pier 36 | Pier 36 | | All | | | \$100.00 | |
| Canoes in Water | July 23, Fri. | | Afternoon, Pier 36 | | Gil | | | | |
| 'Awa Ceremony | | Ceremony | Evening, Pier 36 | | Rocky | | | \$50.00 | |
| | | Dinner | Evening, Pier 36 | | Sharon | | | \$125.00 | |
| | | Breakfast | Morning, Pier 36 | | Gloria Kawelo | | | \$75.00 | |
| Blessing & Launching | July 24, Sat. | | | | Moku / Paige | | | | |
| Preparation for Progra | | Letter to Participants | | June 23 | Moku / Paige | Jarnell | | | |
| | | Invite Dignitaries (Letter, P | | June 23 | Moku / Paige | Palani / Jarnell | | | |
| | | Invitations / Explanation | | June 30 | Moku / Paige | Dennis / Jarnell | | \$750.00 | |
| | | Press Releases | | June 30 | Tina | Elisa | | | |
| | | Send Interisland Tickets | | | | Jarnell | | \$1080.00 | |
| | | Ki'i for Canoe | | June 26 | Rocky | | | | |
| | | Harvest / Cook Lu'au | Waipahu | July 10 | Bert | Puna / Jarnell | | | |
| | | Get Lauhala Mats | | July 10 | Bert | Gil | | | |
| | | Kihei for Crew | | July 15 | Moku / Paige | Wainwright | | | |
| | | Leis for Dignitaries | | July 23 | Moku | | | \$216.00 | 127.00 |
| | | Leis for Canoe | | July 23 | Roy Benham | Jarnell's Halau | | | |
| | | Build Ahu/Place Mats | | July 23 | Bert | Gil, Chad | | | |
| | | Rope off Kapu Area | | July 23 | Bert | Gil, Chad | | | |
| | | Decorations | | July 23 | Leina'ala | | | \$50.00 | |
| | | Sound System | | July 23 | Gil / Jarnell | Wilfred | | \$75.00 | |
| | | Tents, Chairs | | July 23 | Gil | Chad, Crew | | | |

5 x 12.60
 \$540
 \$9 x 12.60

Hawaii Loa Blessing Launching: Work Schedule Events

| Event | Date | Related Activity | Time & Place | Deadline | Coordinator | Assisted by | Delegated | Date Completed | Budget: Proposed | Budget: Actual |
|-----------------------------|------------------------|----------------------------|-------------------------|----------|-------------|-----------------------|-----------|----------------|------------------|----------------|
| | | Sanitation | | July 23 | Gil | Chad, Crew | | | | |
| | | Crane | | July 23 | Gil | | | | \$200.00 | |
| | | Reefer | | July 23 | Gil | | | | | |
| | | Parking & Traffic | | 8 a.m. | Gil | Chad, Crew | | | | |
| Blessing / Launching | | Pikai | Dawn, Pier 36 | | Kalena | | | | | |
| | | Conch Blows/Gates Close | 10 a.m., Pier 36 | | Sam | | | | | |
| | | Open Ceremony | 10 a.m. | | Parley | | | | | |
| | | 'Ai Kapu Ceremony | 10:10 a.m. | | Bert | Keone, Kalena | | | \$500.00 | |
| | | Bless Canoe and Lift Kapu | | | Kalena | | | | | |
| | | Mele Haku Inoa | | | Keli'i | | | | | |
| | | Lowering Canoe into Water | 10:15 a.m. | | Gil | | | | | |
| | | Dipping of Paddles / Chant | | | Keone | Crew | | | | |
| | | Transfer of Canoe | 10:30 a.m. | | Keli'i | Clayton | | | | |
| | | Conch Blows-Pau | 11 a.m. | | Sam | | | | | |
| | | Dispose of food remnants | 11 a.m. | | Bert | Keli'i, Kalena, Keone | | | | |
| | | Ho'okupu from Guests | 11 a.m. | | Parley | Guests | | | | |
| | | Ho'okupu from Dignitaries | 11:15 a.m. | | Palani | Dignitaries | | | | |
| | | Blessing of Food | 12 noon | | Kahu Kaina | | | | \$100.00 | |
| | | Lunch | 12-1:30 p.m. | | Puna | | | | \$1500.00 | |
| | | Entertainment | 12-1:30 p.m. | | | Crew | | | | |
| | | Clean-up | Afternoon | | Gil, Chad | Crew | | | | |
| Church Service | July 25, Sun. | | 8 a.m., Kamehameha Chap | | Moku | | | | | |
| | | Invitations to Crew & Fam | | June 30 | | Jarnell | | | | |
| Na Waiwai o Ke Kai | July 25, Sun. | Parade | 10 a.m., Poka'i | | Joe Lapilio | | | | | |
| Na Waiwai o Ke Kai | July 26-30 | Conference | Wai'anae | | Joe Lapilio | | | | \$500.00 | |
| Reunion of 76 Crew | July 29, Thurs. | 'Awa Ceremony | Pier 36 | | | | | | | |

Hawaii Loa Blessing Launching: Work Schedule Events

| Event | Date | Related Activity | Time & Place | Deadline | Coordinator | Assisted by | Delegated | Date Completed | Budget: Proposed | Budget: Actual |
|---------------------|---------------|------------------------------|--------------------|--------------|---------------|-------------|-----------|----------------|------------------------|----------------|
| | | Dinner | 6 p.m., Pier 36 | | Moku/Paige | | | | \$150.00 | |
| | July 30, Fri. | Breakfast for Crews | a.m., Pier 36 | | | | | | \$75.00 | |
| Departure of Canoes | | | 9 a.m., Pier 36 | | Nainoa | | | | | |
| | | Lunch/Dinner-Canoes | At Sea | | Jarnell | | | | | |
| Prep in Wai'anae | July 30, Fri. | Ed Program | p.m. | | Halani Berard | | | | | |
| | | Community Potluck | p.m. | | Halani | | | | | |
| | | Dinner for Volunteers | p.m. | | Wai'anae HCC | | | | \$3000.00 | |
| | | Volunteer Camp | Overnight | | Gil | | | | | |
| | | Guests at Rest Camp | Overnight | | Koco | | | | | |
| | | | | | | | | | \$1000.00 | |
| Preliminary Welcome | | Escort to Pōka'i | When canoes arrive | off Nānākuli | Canoe Clubs | | | | | |
| | | Bonfire, pu, pahu, oli, etc. | When canoes arrive | off Nānākuli | Koco | | | | | |
| Welcome of Canoes | July 31, Sat. | | | | Moku / Paige | | | | | |
| Prep for Program | | Press Release | | | Tina | Elisa | | | | |
| | | Letters to Families of Crew | | | Lurline D. | | | | | |
| | | Letters to Participants | | | Jarnell | Dennis | | | | |
| | | Invitations | | | Jarnell | | | | \$50.00 | |
| | | Recognition Awards | | | Moku | | | | \$55.00 | |
| | | Leis for Dignitaries | | | Moku | | | | \$246.00 27 | |
| | | T-Shirts for Committee/Crew | | | Moku / Tina | Wainwright? | | | \$170.00 | |
| | | Roping off Beach | | | Canoe Clubs | | | | | |
| | | Tents, Tables, Chairs | | | Gil | | | | \$500.00 | |
| | | Stage & Sound Equipment | | | Brickwood | | | | \$300.00 | |
| | | Parking and Traffic | | | Gil / Gabe | | | | | |
| | | Parking Passes | | | Jarnell | | | | | |
| | | Shuttle Service | | | Gil / Gabe | | | | | |
| | | Security | | | Gil / Gabe | | | | | |
| | | Sanitation | | | Koco | | | | | |



YOUNG CHILDRENS'S FILMS 10:30 a.m., 12:30 & 2:00 p.m. **Auditorium, Lower Level**

Christopher Crumpet (7 min.)
 Georgie and the Dragon (7 min.)
 The Giving Tree (10 min.)
 Moonshadow (7 min.)

SCIENCE FILM 11:00 a.m. & 2:30 p.m. **Auditorium, Lower Level**

The Navigators: Pathfinders of the Pacific (59 min.) The traditional Polynesian art of navigation could be the key to explaining how Polynesia was populated.

WORKSHOPS Tickets for these workshops are \$1.00 each, and are sold on a first-come, first-served basis at the Information Desk. For the Biology Workshop, children 4-7 years of age (tickets .50) must be accompanied by a paying adult.

12:10-1:00 **Volts and Jolts** **Wizard's Lab, Room 175, Lower Level**
 What is electricity? How is it produced? Answer these questions by making electricity with magnets and coils of wire, chemical cells, and static electricity machines. Ages 6-adult.

12:45-1:15 **Biology Workshop** **Biology Lab, Room 141, Lower Level**
 Observe and hold a variety of gentle animals to learn more about their behavior and physiology.

DISCOVERY LABS No tickets required; drop in during open hours.
1:30-4:15 **Biology Lab** **Room 141, Lower Level**
 Hold gentle animals, experiment with mazes, use stethoscopes to compare your heartbeat to a rabbit's. Discover more about yourself and other living organisms.

1:30-4:30 **Wizard's Lab** **Room 175, Lower Level**
 Explore the Wizard's Lab for an unusual afternoon of scientific amusements and do-it-yourself experiments. Stand your hair on end using static electricity. Experiment with light and lenses. Tinker with magnetic fields, optical illusion devices, swinging pendulums, strobe discs, and lots of other whosits.

CEPUP INFORMATION CENTER **Room 121, Lower Level**
Tues-Thurs. The Chemical Education for Public Understanding Project (CEPUP) at LHS invites you to visit their new information center. Watch videos on important issues such as hazardous waste, ask a computer about chemicals, or learn about the hazards and benefits of commonly used chemicals.
1:00-3:00

EHRMAN SCIENCE EDUCATION LIBRARY **Room 120A, Lower Level**
Tuesday While at the Hall, be sure to visit the Science Education Library, where you will find general interest and instructional materials for all ages on science and mathematics. Whether you have a particular topic to investigate, or would just like to relax and browse for a while, you are welcome in the library. Most library materials circulate for one month.
through Thursday,
+ Saturday
12:30-4:30

Admission price includes everything except Wizard's Lab WORKSHOP & Biology WORKSHOP.
Information 642-5132

Have you considered becoming a member of the Lawrence Hall of Science? If you join today, your admission will be refunded. Inquire at the Information Desk.

THE WAYFINDING ART

October 12, 1986
Lawrence Hall of Science
University of California
Berkeley, California 94720
(415) 642-5133

OPENING DAY CELEBRATION--Celebrate with us as we open our new exhibition, The Wayfinding Art: Ocean Voyaging in Polynesia. After nearly two years of collaboration and development with the Bernice P. Bishop Museum in Honolulu, Hawaii, this exciting exhibition opens to the public.

SCHEDULE OF FESTIVITIES

12:30 **Holt Exhibit Hall, Upper Level**
Ribbon Cutting Ceremony to open The Wayfinding Art. Staff members from Lawrence Hall of Science and the Bishop Museum will open the exhibition, which was made possible through a generous grant from the National Endowment for the Humanities, and additional gifts from the L. J. Skaggs and Mary C. Skaggs Foundation and ATT.

12:00, 1:00, 2:15, 3:30 **Holt Planetarium, Upper Level**
PLANETARIUM SHOWS: "Journey by Starlight," a new interactive planetarium program (45 min.) where you'll learn to navigate by the stars. Free tickets will be distributed on a first-come, first-served basis at the Information Desk starting one hour before each show. No children under six admitted. Not wheelchair accessible.

1:00 **Auditorium, Lower Level**
Presentation by Will Kyselka, astronomer of the Bishop Museum Planetarium, on the Voyage of Rediscovery.

1:45 **Rear Patio, Upper Level**
Hawaiian Dancing, by the Hui Pa Hula O Leianuenue, directed by Mehealani Uchiyama.

2:30 **Rear Patio, Upper Level**
Tongan Dancing, directed by Louise Sanft.

2:30-4:00
CRAFT AND FOOD DEMONSTRATIONS by the Kumu Hula Association
Ukulele, Hollis Baker, Front Lobby
Hula Dance, Velma Sakamoto, Front Lobby
Poi Making, Kalani Wahilani, Rear Exhibit Area
Laulau Making, Ululani Simon, Rear Exhibit Area
Ipu (gourd) Making, Buddy Carson Koakanu, Exhibit Corridor
Ti-leaf Skirt Making, Raylene Lancaster, Rear Exhibit Area
Uliuli (feather gourds) Making, Gordon Lum, Exhibit Corridor
Kukui Lei Making, Joe Maniscalco, Front Lobby
Lauhala Jewelry Making, Pualoke Dela Cerna, Front Lobby
Feather Lei Making, Ehulani Lum, Front Lobby
Ka Haku Lei/Kui Lei (fresh flower leis), Darrell Holland, Ex.Corr.

OVER